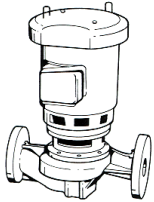


JOB: UNIT TAG: ENGINEER: CONTRACTOR:	REPRESENTATIVE: ORDER NO.: SUBMITTED BY: APPROVED BY:	DATE: DATE: DATE:
---	--	--



4x4x7

Series 80[®]

In-Line Mounted Centrifugal Pumps

SPECIFICATIONS

FLOW _____ HEAD _____

HP _____ RPM _____

VOLTS _____

CYCLE _____ PHASE _____

ENCLOSURE _____

APPROX. WEIGHT _____

SPECIALS _____

MATERIALS OF CONSTRUCTION

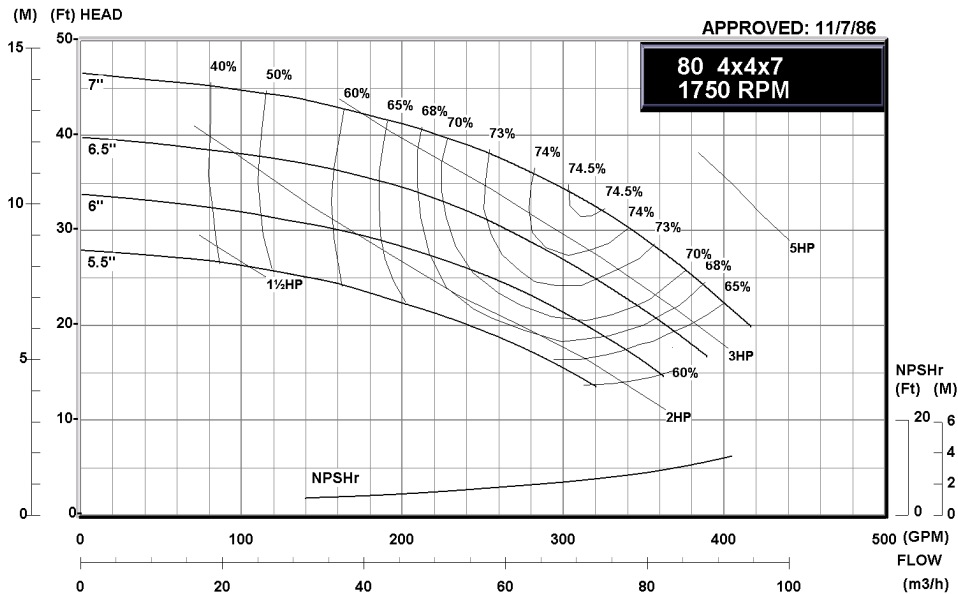
- BRONZE FITTED ALL IRON

MAXIMUM WORKING PRESSURE

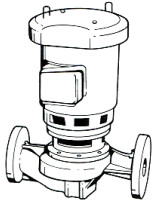
- 175 psi (12 bar) W.P. with 125# ANSI flange drilling
- 250 psi (17 bar) W.P. with 250# ANSI flange drilling (requires 80-S)
- 300 psi (21 bar) W.P. with 250# ANSI flange drilling (EPR-Sintered Silicon Carbide-Sintered Silicon Carbide) Requires 80-S

TYPE OF SEAL

- 80 Standard Seal (Buna-Carbon/Ceramic)
- 80 -F Standard Seal w/ Flush Line (Buna-Carbon/Ceramic)
- 80 -S Stuffing Box construction w/ Flushed Mechanical Single Seal (EPR-Tungsten Carbide/Carbon)
- 80 -D Stuffing Box construction w/ Flushed Double Mechanical Seal (EPR-Carbon/Ceramic) Requires external water source
- 80 -PF Stuffing Box Construction w/ Flushed Packing (Graphite Impregnated PTFE)



JOB: UNIT TAG: ENGINEER: CONTRACTOR:	REPRESENTATIVE: ORDER NO.: SUBMITTED BY: APPROVED BY:	DATE: DATE: DATE:
---	--	--



4x4x7

Series 80[®]

In-Line Mounted Centrifugal Pumps

SPECIFICATIONS

FLOW _____ HEAD _____

HP _____ RPM _____

VOLTS _____

CYCLE _____ PHASE _____

ENCLOSURE _____

APPROX. WEIGHT _____

SPECIALS _____

MATERIALS OF CONSTRUCTION

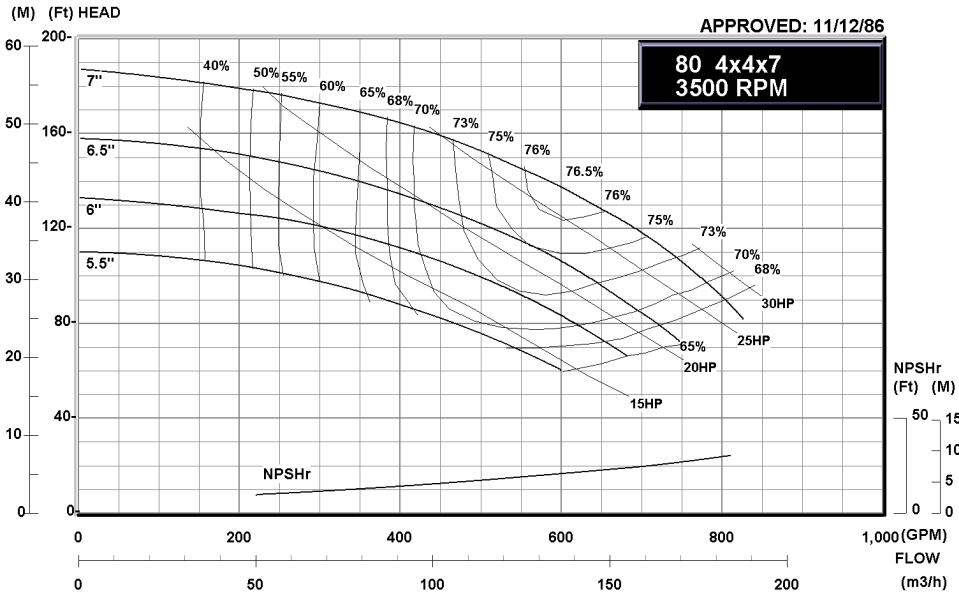
- BRONZE FITTED ALL IRON

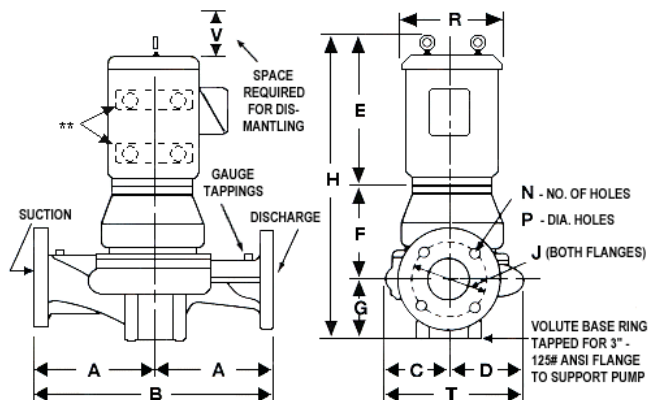
MAXIMUM WORKING PRESSURE

- 175 psi (12 bar) W.P. with 125# ANSI flange drilling
- 250 psi (17 bar) W.P. with 250# ANSI flange drilling (requires 80-S)
- 300 psi (21 bar) W.P. with 250# ANSI flange drilling (EPR-Sintered Silicon Carbide-Sintered Silicon Carbide) Requires 80-S

TYPE OF SEAL

- 80 Standard Seal (Buna-Carbon/Ceramic)
- 80 -F Standard Seal w/ Flush Line (Buna-Carbon/Ceramic)
- 80 -S Stuffing Box construction w/ Flushed Mechanical Single Seal (EPR-Tungsten Carbide/Carbon)
- 80 -D Stuffing Box construction w/ Flushed Double Mechanical Seal (EPR-Carbon/Ceramic) Requires external water source
- 80 -PF Stuffing Box Construction w/ Flushed Packing (Graphite Impregnated PTFE)





FLANGE DIMENSIONS IN INCHES (MM)			
	SIZE	THICKNESS	O.D.
Discharge	4"	1-1/4 (32)	9-1/2 (241)
Suction	4 "	1-1/4 (32)	9-1/2 (241)

Flanges are 125# ANSI - Standard
250# ANSI - Available

** Motor may be supplied with feet

DIMENSIONS - Inches (mm) STANDARD SEAL 80, 80-F

MOTOR FRAME	A	B	C	D	E (Max)	F	G	H (Max)	125# ANSI			250# ANSI			R	S (Max) [*]	T	V (Min)
									J	N	P	J	N	P				
145	10-1/2 (267)	21 (533)	5-1/2 (140)	6-3/4 (171)	12-5/8 (321)	5-1/8 (130)	6-3/8 (162)	24-1/8 (613)	7-1/2 (190)	8	3/4 (19)	7-7/8 (200)	8	7/8 (22)	9-3/4 (248)	1-1/2 (38)	12-1/4 (311)	5 (127)
182	10-1/2 (267)	21 (533)	5-1/2 (140)	6-3/4 (171)	15-5/16 (389)	5-1/8 (130)	6-3/8 (162)	26-13/16 (681)	7-1/2 (190)	8	3/4 (19)	7-7/8 (200)	8	7/8 (22)	11-3/4 (298)	1 (25)	12-1/4 (311)	5 (127)
184	10-1/2 (267)	21 (533)	5-1/2 (140)	6-3/4 (171)	15-5/16 (389)	5-1/8 (130)	6-3/8 (162)	26-13/16 (681)	7-1/2 (190)	8	3/4 (19)	7-7/8 (200)	8	7/8 (22)	11-3/4 (298)	1 (25)	12-1/4 (311)	5 (127)
213	10-1/2 (267)	21 (533)	5-1/2 (140)	6-3/4 (171)	19-1/4 (489)	5-1/8 (130)	6-3/8 (162)	30-3/4 (781)	7-1/2 (190)	8	3/4 (19)	7-7/8 (200)	8	7/8 (22)	-	-	12-1/4 (311)	5 (127)
215	10-1/2 (267)	21 (533)	5-1/2 (140)	6-3/4 (171)	19-1/4 (489)	5-1/8 (130)	6-3/8 (162)	30-3/4 (781)	7-1/2 (190)	8	3/4 (19)	7-7/8 (200)	8	7/8 (22)	-	-	12-1/4 (311)	5 (127)
254	10-1/2 (267)	21 (533)	5-1/2 (140)	6-3/4 (171)	24-1/8 (613)	9 (229)	6-3/8 (162)	39-1/2 (1003)	7-1/2 (190)	8	3/4 (19)	7-7/8 (200)	8	7/8 (22)	17 (432)	-	12-1/4 (311)	5 (127)
256	10-1/2 (267)	21 (533)	5-1/2 (140)	6-3/4 (171)	24-1/8 (613)	9 (229)	6-3/8 (162)	39-1/2 (1003)	7-1/2 (190)	8	3/4 (19)	7-7/8 (200)	8	7/8 (22)	17 (432)	-	12-1/4 (311)	5 (127)
284	10-1/2 (267)	21 (533)	5-1/2 (140)	6-3/4 (171)	23-5/8 (600)	9 (229)	6-3/8 (162)	39 (991)	7-1/2 (190)	8	3/4 (19)	7-7/8 (200)	8	7/8 (22)	16-1/8 (410)	4-5/8 (117)	12-1/4 (311)	5 (127)

STUFFING BOX 80-PF, 80-S, 80-D

MOTOR FRAME	A	B	C	D	E (Max)	F	G	H (Max)	125# ANSI			250# ANSI			R	S (Max) [*]	T	V (Min)
									J	N	P	J	N	P				
145	10-1/2 (267)	21 (533)	5-1/2 (140)	6-3/4 (171)	12-5/8 (321)	8-1/4 (210)	6-3/8 (162)	27-1/4 (692)	7-1/2 (190)	8	3/4 (19)	7-7/8 (200)	8	7/8 (22)	9-3/4 (248)	1-1/2 (38)	12-1/4 (311)	5 (127)
182	10-1/2 (267)	21 (533)	5-1/2 (140)	6-3/4 (171)	15-5/16 (389)	8-1/4 (210)	6-3/8 (162)	29-15/16 (760)	7-1/2 (190)	8	3/4 (19)	7-7/8 (200)	8	7/8 (22)	11-3/4 (298)	1 (25)	12-1/4 (311)	5 (127)
184	10-1/2 (267)	21 (533)	5-1/2 (140)	6-3/4 (171)	15-5/16 (389)	8-1/4 (210)	6-3/8 (162)	29-15/16 (760)	7-1/2 (190)	8	3/4 (19)	7-7/8 (200)	8	7/8 (22)	11-3/4 (298)	1 (25)	12-1/4 (311)	5 (127)
213	10-1/2 (267)	21 (533)	5-1/2 (140)	6-3/4 (171)	19-1/4 (489)	9 (229)	6-3/8 (162)	34-5/8 (879)	7-1/2 (190)	8	3/4 (19)	7-7/8 (200)	8	7/8 (22)	14 (356)	-	12-1/4 (311)	5 (127)
215	10-1/2 (267)	21 (533)	5-1/2 (140)	6-3/4 (171)	19-1/4 (489)	9 (229)	6-3/8 (162)	34-5/8 (879)	7-1/2 (190)	8	3/4 (19)	7-7/8 (200)	8	7/8 (22)	14 (356)	-	12-1/4 (311)	5 (127)
254	10-1/2 (267)	21 (533)	5-1/2 (140)	6-3/4 (171)	24-1/8 (613)	9 (229)	6-3/8 (162)	39-1/2 (1003)	7-1/2 (190)	8	3/4 (19)	7-7/8 (200)	8	7/8 (22)	17 (432)	-	12-1/4 (311)	5 (127)
256	10-1/2 (267)	21 (533)	5-1/2 (140)	6-3/4 (171)	24-1/8 (613)	9 (229)	6-3/8 (162)	39-1/2 (1003)	7-1/2 (190)	8	3/4 (19)	7-7/8 (200)	8	7/8 (22)	17 (432)	-	12-1/4 (311)	5 (127)
284	10-1/2 (267)	21 (533)	5-1/2 (140)	6-3/4 (171)	23-5/8 (600)	9 (229)	6-3/8 (162)	39 (991)	7-1/2 (190)	8	3/4 (19)	7-7/8 (200)	8	7/8 (22)	16-1/8 (410)	4-5/8 (117)	12-1/4 (311)	5 (127)

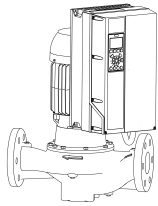
Dimensions are subject to change. Not to be used for construction purposes unless certified.

NOTE: For 1 phase Motors add 1" to dimensions E & H.

^{*}For TEFC Motors add S dimension to dimensions E & H.

Xylem Inc.
8200 N. Austin Avenue
Morton Grove, IL 60053
Phone: (847)966-3700
Fax: (847)965-8379
www.bellgossett.com





4x4x7 Series 80[®]

In-Line Mounted Centrifugal Pumps
With Optional Integrated Technologic[®] featuring Sensorless Control

DIMENSIONS – Inches (mm)

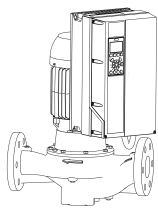
STANDARD SEAL 80, 80-F

MOTOR FRAME	A	B	E (Max)	G	H (Max)	125# ANSI			250# ANSI			R	VFD	Rv	Zv	W	Hv	Xv
						J	N	P	J	N	P							
145	10-1/2 (267)	21 (533)	12-5/8 (321)	6-3/8 (162)	24-1/8 (613)	7-1/2 (190)	8	3/4 (19)	7-7/8 (200)	8	7/8 (22)	9-3/4 (248)	A5	11-25/32 (299)	11-21/64 (288)	9-1/2 (241)	30-49/64 (781)	53/64 (21)
182	10-1/2 (267)	21 (533)	15-5/16 (389)	6-3/8 (162)	26-13/16 (681)	7-1/2 (190)	8	3/4 (19)	7-7/8 (200)	8	7/8 (22)	11-3/4 (298)	A5	12-25/32 (324)	12-1/32 (306)	9-1/2 (241)	29-31/32 (761)	1-17/32 (39)
184	10-1/2 (267)	21 (533)	15-5/16 (389)	6-3/8 (162)	26-13/16 (681)	7-1/2 (190)	8	3/4 (19)	7-7/8 (200)	8	7/8 (22)	11-3/4 (298)	A5	12-25/32 (324)	12-1/32 (306)	9-1/2 (241)	29-31/32 (761)	1-17/32 (39)
213	10-1/2 (267)	21 (533)	19-1/4 (489)	6-3/8 (162)	30-3/4 (781)	7-1/2 (190)	8	3/4 (19)	7-7/8 (200)	8	7/8 (22)	14 (356)	B1	15-53/64 (402)	14-7/32 (361)	9-1/2 (241)	34-59/64 (887)	3-23/32 (94)
215	10-1/2 (267)	21 (533)	19-1/4 (489)	6-3/8 (162)	30-3/4 (781)	7-1/2 (190)	8	3/4 (19)	7-7/8 (200)	8	7/8 (22)	14 (356)	B1	15-53/64 (402)	14-7/32 (361)	9-1/2 (241)	33-25/64 (848)	3-23/32 (94)
254	10-1/2 (267)	21 (533)	24-1/8 (613)	6-3/8 (162)	39-1/2 (1003)	7-1/2 (190)	8	3/4 (19)	7-7/8 (200)	8	7/8 (22)	17 (432)	B1	16-53/64 (427)	14-59/64 (379)	9-1/2 (241)	42-1/2 (1079)	4-27/64 (112)
													B2	16-53/64 (427)	14-59/64 (379)	9-1/2 (241)	46-61/64 (1193)	4-27/64 (112)
256	10-1/2 (267)	21 (533)	24-1/8 (613)	6-3/8 (162)	39-1/2 (1003)	7-1/2 (190)	8	3/4 (19)	7-7/8 (200)	8	7/8 (22)	17 (432)	B1	16-53/64 (427)	14-59/64 (379)	9-1/2 (241)	41-7/8 (1063)	4-27/64 (112)
													B2	16-53/64 (427)	14-59/64 (379)	9-1/2 (241)	46-21/64 (1177)	4-27/64 (112)
													C1	18-53/64 (478)	17-3/32 (434)	12-3/32 (307)	47-7/32 (1200)	6-19/32 (167)
284	10-1/2 (267)	21 (533)	23-5/8 (600)	6-3/8 (162)	39 (991)	7-1/2 (190)	8	3/4 (19)	7-7/8 (200)	8	7/8 (22)	16-1/8 (410)	B1	17-37/64 (446)	15-29/64 (392)	9-1/2 (241)	41-1/4 (1048)	4-61/64 (126)
													B2	17-37/64 (446)	15-29/64 (392)	9-1/2 (241)	45-45/64 (1161)	4-61/64 (126)
													C1	19-37/64 (497)	17-5/8 (448)	12-3/32 (307)	48-7/64 (1222)	7-1/8 (181)

Xylem Inc.
8200 N. Austin Avenue
Morton Grove, IL 60053
Phone: (847)966-3700
Fax: (847)965-8379
www.bellgossett.com



Bell & Gossett is a trademark of Xylem Inc. or one of its subsidiaries.
© 2013 Xylem Inc.



4x4x7 Series 80[®]

In-Line Mounted Centrifugal Pumps
With Optional Integrated Technologic[®] featuring Sensorless Control

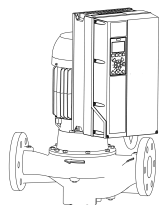
STUFFING BOX 80-PF, 80-S, 80-D

MOTOR FRAME	A	B	E (Max)	G	H (Max)	125# ANSI			250# ANSI			R	VFD	Rv	Zv	W	Hv	Xv
						J	N	P	J	N	P							
145	10-1/2 (267)	21 (533)	12-5/8 (321)	6-3/8 (162)	27-1/4 (692)	7-1/2 (190)	8	3/4 (19)	7-7/8 (200)	8	7/8 (22)	9-3/4 (248)	A5	11-25/32 (299)	11-21/64 (288)	9-1/2 (241)	33-57/64 (861)	53/64 (21)
182	10-1/2 (267)	21 (533)	15-5/16 (389)	6-3/8 (162)	29-15/16 (760)	7-1/2 (190)	8	3/4 (19)	7-7/8 (200)	8	7/8 (22)	11-3/4 (298)	A5	12-25/32 (324)	12-1/32 (306)	9-1/2 (241)	33-3/32 (840)	1-17/32 (39)
184	10-1/2 (267)	21 (533)	15-5/16 (389)	6-3/8 (162)	29-15/16 (760)	7-1/2 (190)	8	3/4 (19)	7-7/8 (200)	8	7/8 (22)	11-3/4 (298)	A5	12-25/32 (324)	12-1/32 (306)	9-1/2 (241)	33-3/32 (840)	1-17/32 (39)
213	10-1/2 (267)	21 (533)	19-1/4 (489)	6-3/8 (162)	34-5/8 (879)	7-1/2 (190)	8	3/4 (19)	7-7/8 (200)	8	7/8 (22)	14 (356)	B1	15-53/64 (402)	14-7/32 (361)	9-1/2 (241)	38-51/64 (985)	3-23/32 (94)
215	10-1/2 (267)	21 (533)	19-1/4 (489)	6-3/8 (162)	34-5/8 (879)	7-1/2 (190)	8	3/4 (19)	7-7/8 (200)	8	7/8 (22)	14 (356)	B1	15-53/64 (402)	14-7/32 (361)	9-1/2 (241)	37-17/64 (947)	3-23/32 (94)
254	10-1/2 (267)	21 (533)	24-1/8 (613)	6-3/8 (162)	39-1/2 (1003)	7-1/2 (190)	8	3/4 (19)	7-7/8 (200)	8	7/8 (22)	17 (432)	B1	16-53/64 (427)	14-59/64 (379)	9-1/2 (241)	42-1/2 (1079)	4-27/64 (112)
													B2	16-53/64 (427)	14-59/64 (379)	9-1/2 (241)	46-61/64 (1193)	4-27/64 (112)
256	10-1/2 (267)	21 (533)	24-1/8 (613)	6-3/8 (162)	39-1/2 (1003)	7-1/2 (190)	8	3/4 (19)	7-7/8 (200)	8	7/8 (22)	17 (432)	B1	16-53/64 (427)	14-59/64 (379)	9-1/2 (241)	41-7/8 (1063)	4-27/64 (112)
													B2	16-53/64 (427)	14-59/64 (379)	9-1/2 (241)	46-21/64 (1177)	4-27/64 (112)
													C1	18-53/64 (478)	17-3/32 (434)	12-3/32 (307)	47-7/32 (1200)	6-19/32 (167)
284	10-1/2 (267)	21 (533)	23-5/8 (600)	6-3/8 (162)	39 (991)	7-1/2 (190)	8	3/4 (19)	7-7/8 (200)	8	7/8 (22)	16-1/8 (410)	B1	17-37/64 (446)	15-29/64 (392)	9-1/2 (241)	41-1/4 (1048)	4-61/64 (126)
													B2	17-37/64 (446)	15-29/64 (392)	9-1/2 (241)	45-45/64 (1161)	4-61/64 (126)
													C1	19-37/64 (497)	17-5/8 (448)	12-3/32 (307)	48-7/64 (1222)	7-1/8 (181)

Xylem Inc.
8200 N. Austin Avenue
Morton Grove, IL 60053
Phone: (847)966-3700
Fax: (847)965-8379
www.bellgossett.com

xylem
Let's Solve Water

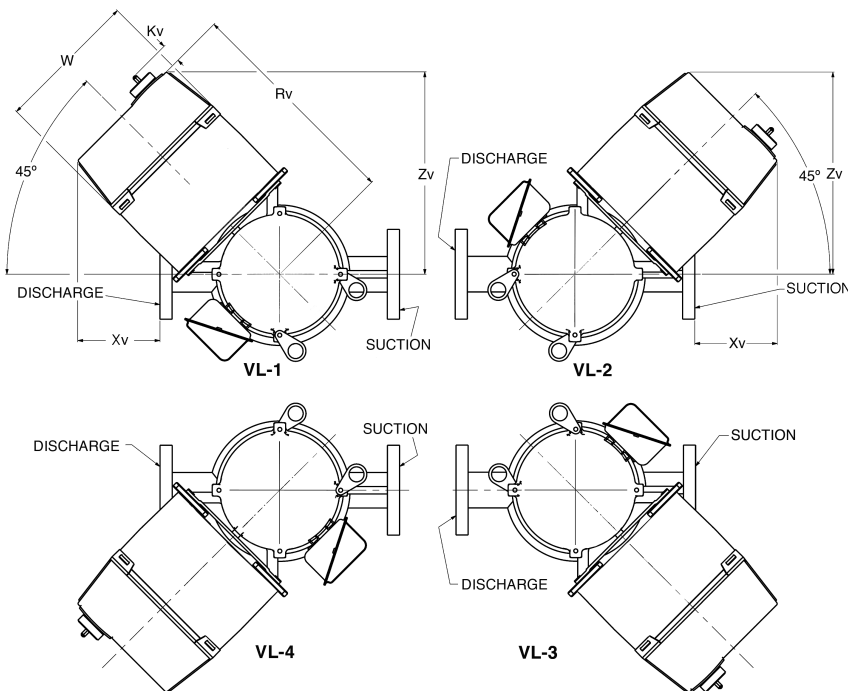
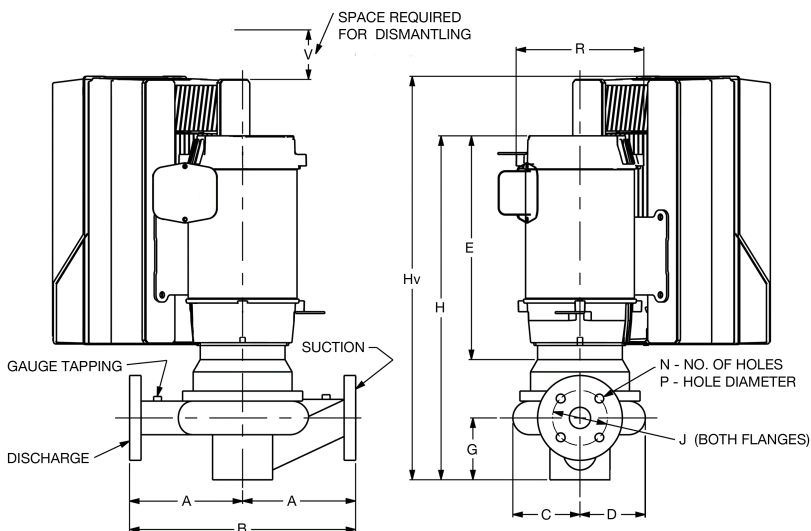
Bell & Gossett is a trademark of Xylem Inc. or one of its subsidiaries.
© 2012 Xylem Inc.



4x4x7 Series 80[®]

In-Line Mounted Centrifugal Pumps
With Optional Integrated Technologic[®] featuring Sensorless Control

TECHNOLOGIC STANDARD FEATURES	
CONTROL METHOD	Constant Pressure, Linear Control Curve, Quadratic Control Curve Factory configured for sensorless operation standard. Field configurable for use with a wired transducer.
ENCLOSURE	IP55 / NEMA 12 / UL type 12
POWER DISCONNECT SWITCH	Included standard. Fused Disconnect Switch optional.
EMI/RFI CONTROL	Integrated filter to meet EN62800-3.
HARMONIC SUPPRESSION	Integrated non-saturating dual DC link reactors provide better harmonic performance than a 5% AC line reactor.
COOLING	Fan-cooled through temperature controlled and easy replacement.
AMBIENT TEMPERATURE RATING	14°F to 113°F (-10°C to 45°C)
COMMUNICATION PROTOCOLS	BACnet, Modbus RTU, N2 Metasys, FLN Apogee
ANALOG INPUTS	2 configurable for either voltage (0 to 10VDC) or current(0/4 to 20mA)
ANALOG OUTPUTS	1 (0/4 to 20mA) up to 500 ohm load accurate to 1% of full scale
DIGITAL INPUTS	4 (0 to 24VDC), NPN or PNP, 0 to 24VDC, on 5 msec scan interval, Up to 2 can be configured as pulse inputs.
DIGITAL OUTPUTS	2 (0 to 24VDC), 40mA max current, configurable as pulse outputs.
RELAY OUTPUTS	2 programmable, 240VAC or 400VAC up to 2 A



Xylem Inc.
8200 N. Austin Avenue
Morton Grove, IL 60053
Phone: (847)966-3700
Fax: (847)965-8379
www.bellgossett.com

xylem
Let's Solve Water

Bell & Gossett is a trademark of Xylem Inc. or one of its subsidiaries.
© 2013 Xylem Inc.