

SERIES 4360 IN-LINE PUMPS INSIDE MECHANICAL SEAL | 2B | SUBMITTAL

File No: 43.605
Date: NOV. 26, 2014
Supersedes: 43.605
Date: MAR. 15, 2012

Job: _____ Representative: _____
 _____ Ordered by: _____ Date: _____
 Engineer: _____ Submitted by: _____ Date: _____
 Contractor: _____ Approved by: _____ Date: _____

PUMP DESIGN DATA

No. of pumps: _____ Tag: _____
 Capacity: _____ USgpm (L/s) Head: _____ ft (m)
 Liquid: _____ Viscosity: _____
 Temperature: _____ °F (°C) Specific Gravity: _____
 Suction: 2"(50mm) Discharge: 2"(50mm)

MOTOR DESIGN DATA

HP: _____ RPM: _____ Frame size: _____ Enclosure: _____
 Volts: _____ Hertz: 60 Hz Phase: 3
 Efficiency*: Standard Energy EFF 12.11
 NEMA premium 12.12

* Frame 56 motors: Standard Efficiency only.
 JM motors: 12.11 or 12.12

MATERIALS OF CONSTRUCTION

PART NAME	■ BRONZE FITTED	■ ALL IRON	■ ALL BRONZE
Casing	Cast iron	Cast iron	Bronze
Companion flanges	Cast iron	Cast iron	Bronze
Pump/motor bracket	Cast iron	Cast iron	Bronze

Impeller: Non-ferrous

Stub Shaft: Stainless Steel

MECHANICAL SEAL DATA

Construction	Bronze fitted / All bronze	All iron
Rotating hardware	Brass	Steel
Seal type: Inside single spring	Rotating face: Carbon	
Manufacturer: Armstrong	Stationary seat: Ceramic	
Manu code: Armseal	Secondary seal /spring: BUNA-N/stainless steel	

OPTIONAL EQUIPMENT

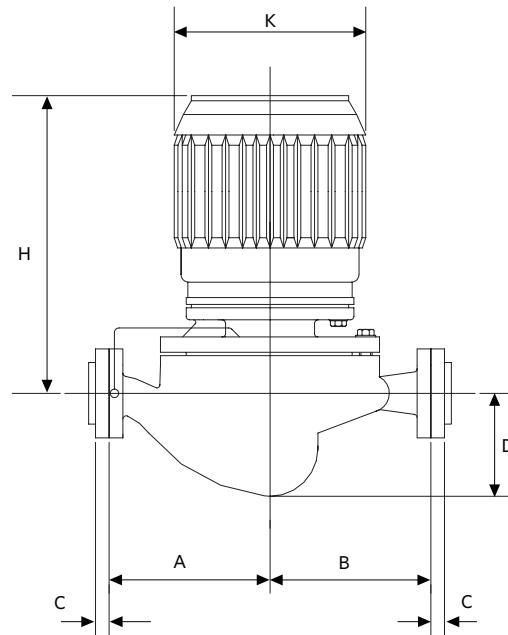
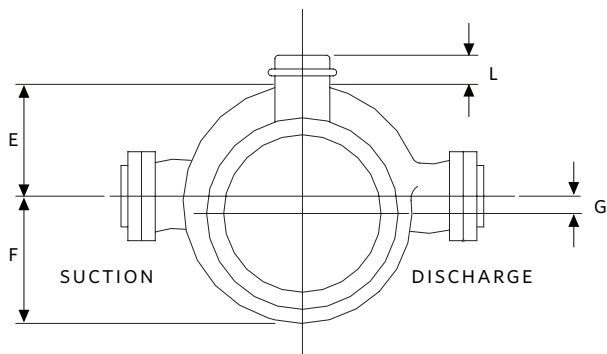
MAXIMUM PUMP OPERATING CONDITIONS

175 psig at 150°F (12 bars at 65°C)
 140 psig at 225°F (10 bars at 107°C)

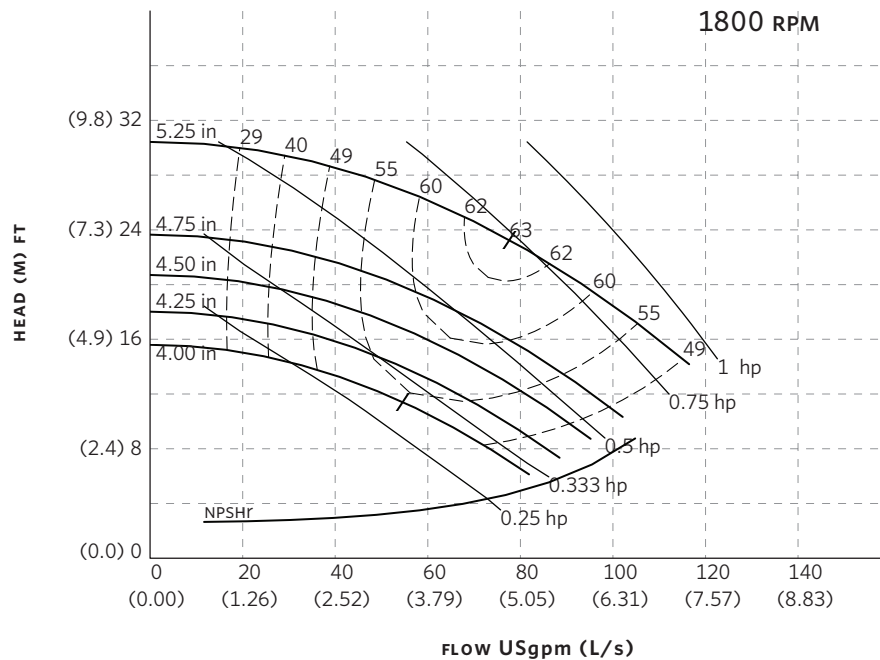
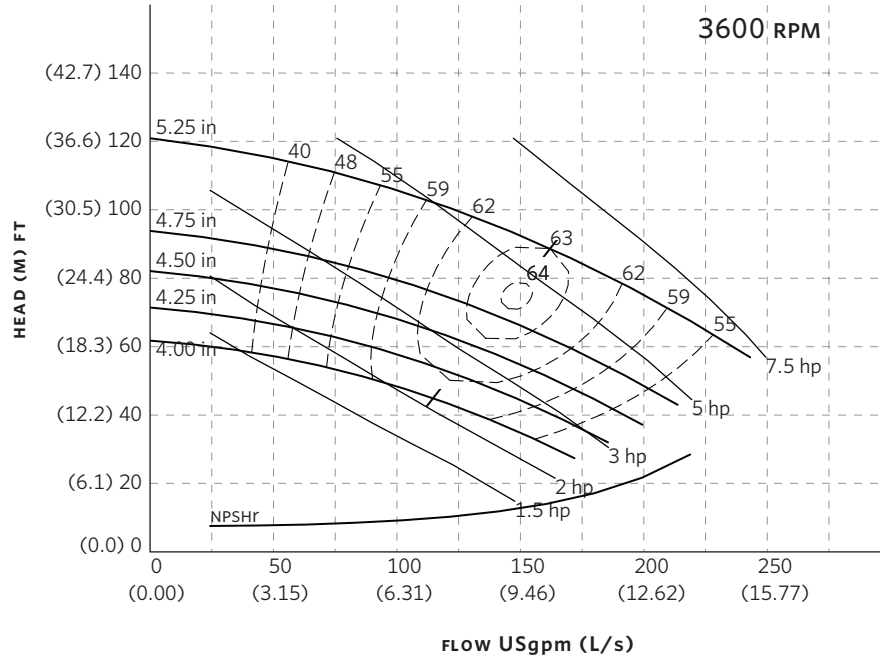
MOTOR FRAME	HORSEPOWER @ RPM		MAX. DIMENSIONS INCHES (mm)				SHIP. WEIGHT lbs (kg)		
	3500	1750	G	H		K	L	ODP	TEFC
				SINGLE PHASE	THREE PHASE	MAX	MAX		
56c	-	0.33	1.38 (35)	11.75 (298)	11.75 (298)	7.50 (191)	1.00 (25)	49 (22.2)	49 (22.2)
56c	-	0.5	1.38 (35)	12.75 (324)	11.75 (298)	7.50 (191)	1.00 (25)	49 (22.2)	49 (22.2)
56c	-	0.75	1.38 (35)	13.13 (334)	12.75 (324)	7.50 (191)	1.00 (25)	51 (23.1)	51 (23.1)
56c	-	1	1.38 (35)	13.88 (353)	12.75 (324)	7.50 (191)	1.00 (25)	54 (24.5)	59 (26.7)
56c	2	-	1.38 (35)	13.88 (353)	13.13 (334)	7.50 (191)	1.00 (25)	59 (26.7)	64 (29.0)
56c	3	-	1.38 (35)	-	13.13 (334)	7.50 (191)	1.00 (25)	64 (29.0)	84 (38.1)
56c	5	-	1.38 (35)	-	14.63 (372)	7.50 (191)	1.00 (25)	94 (42.6)	-

PUMP DIMENSIONS
INCHES (mm)

A	B	C	D	E	F
6.63	5.13	0.88	3.50	2.88	5.00
(168)	(130)	(22)	(89)	(73)	(127)



SERIES 4360 PERFORMANCE CURVES



Performance curves are for reference only.
Confirm current performance data with Armstrong ACE Online selection software.

TORONTO

23 BERTRAND AVENUE
TORONTO, ONTARIO
CANADA
M1L 2P3
+416 755 2291

BUFFALO

93 EAST AVENUE
NORTH TONAWANDA, NEW YORK
U.S.A.
14120-6594
+716 693 8813

BIRMINGHAM

HEYWOOD WHARF, MUCKLOW HILL
HALESOWEN, WEST MIDLANDS
UNITED KINGDOM
B62 8DJ
+44 (0) 8444 145 145

MANCHESTER

WENLOCK WAY
MANCHESTER
UNITED KINGDOM
M12 5JL
+44 (0) 8444 145 145

BANGALORE

#59, FIRST FLOOR, 3RD MAIN
MARGOSA ROAD, MALLESWARAM
BANGALORE, INDIA
560 003
+91 (0) 80 4906 3555

SHANGHAI

NO. 1619 HU HANG ROAD, XI DU TOWNSHIP
FENG XIAN DISTRICT, SHANGHAI
P.R.C.
201401
+86 21 3756 6696

ARMSTRONG INTEGRATED
ESTABLISHED 1934

ARMSTRONGINTEGRATED.COM

**MAKING
ENERGY
MAKE
SENSE™**