

JOB: UNIT TAG: ENGINEER: CONTRACTOR:	REPRESENTATIVE: SUBMITTED BY: APPROVED BY:	DATE: DATE:
---	---	----------------------------------



2A Series "90"

Centrifugal Pumps

Vertical In-Line Mounted - Close Coupled

SPECIFICATIONS

FLOW _____ HEAD _____
 HP _____ RPM _____
 VOLTS _____
 CYCLE _____ PHASE _____
 ENCLOSURE _____
 APPROX. WEIGHT _____
 SPECIALS _____

MATERIALS OF CONSTRUCTION

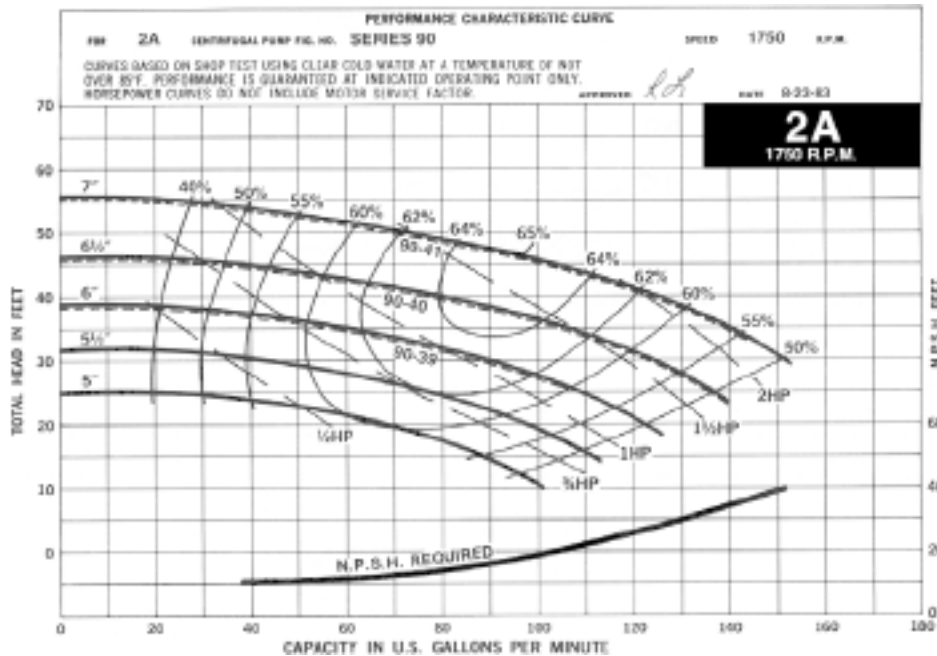
BRONZE FITTED ALL BRONZE †
 †Option Not Available with 3HP 1800RPM or 7-1/2 - 15HP 3600RPM ratings.

TYPE OF SEAL

90 Standard Seal (Buna-Carbon/Ceramic)
 Optional Seal (EPR Carbon/Tungsten Carbide)

MAXIMUM WORKING PRESSURE

175 psi (12 bar) W.P.



JOB: UNIT TAG: ENGINEER: CONTRACTOR:	REPRESENTATIVE: SUBMITTED BY: APPROVED BY: DATE: DATE:
---	---



2A Series "90"

Centrifugal Pumps

Vertical In-Line Mounted - Close Coupled

SPECIFICATIONS

FLOW _____ HEAD _____
 HP _____ RPM _____
 VOLTS _____
 CYCLE _____ PHASE _____
 ENCLOSURE _____
 APPROX. WEIGHT _____
 SPECIALS _____

MATERIALS OF CONSTRUCTION

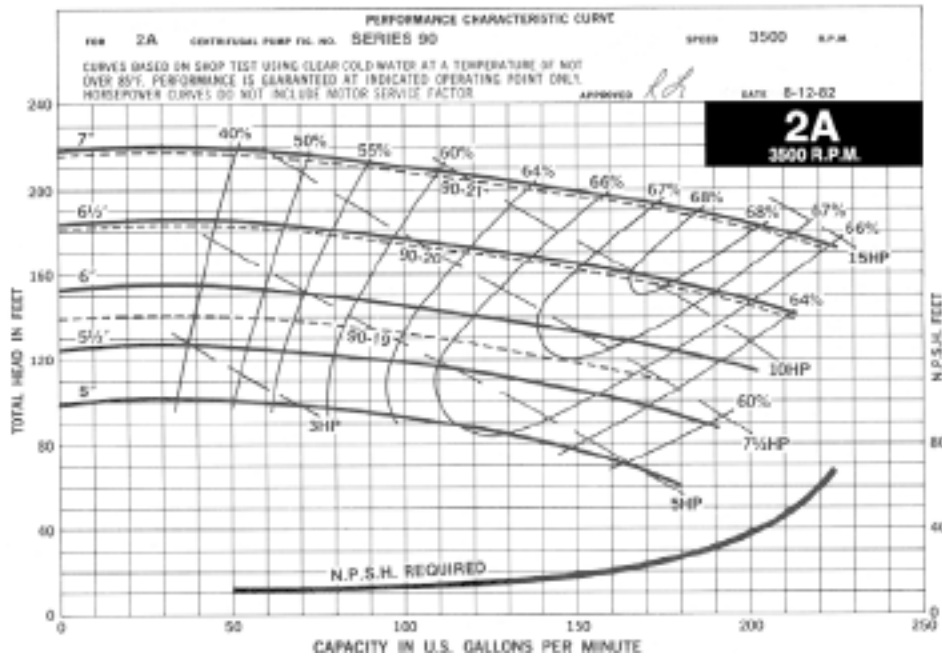
BRONZE FITTED ALL BRONZE †
 †Option Not Available with 3HP 1800RPM or 7-1/2 - 15HP 3600RPM ratings.

TYPE OF SEAL

90 Standard Seal (Buna-Carbon/Ceramic)
 Optional Seal (EPR Carbon/Tungsten Carbide)

MAXIMUM WORKING PRESSURE

175 psi (12 bar) W.P.



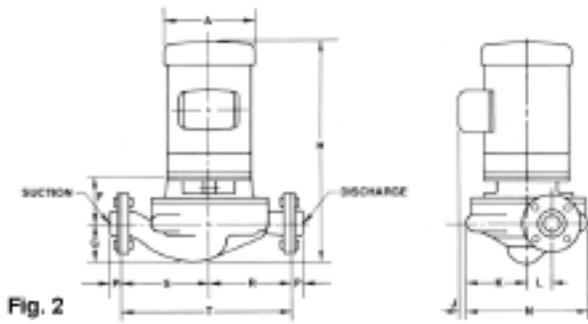


Fig. 2

Companion Flanges furnished for Suction and Discharge

PUMP SIZE	SUCTION AND DISCH. SIZE - INCHES NPT	PUMP DIMENSIONS IN INCHES (MM)									
		MOTOR FR.	F	G	K	L	N	P	R	S	T
2A	2	56	3-11/16 (94)	3-3/4 (95)	4-3/4 (121)	1 (25)	9-7/8 (251)	13/16 (21)	6-1/2 (165)	7-1/2 (190)	14 (356)
2A	2	182-84JM	4-9/16 (116)	3-3/4 (95)	4-3/4 (121)	1 (25)	9-7/8 (251)	13/16 (21)	6-1/2 (165)	7-1/2 (190)	14 (356)
2A	2	213-15JM	4-9/16 (116)	3-3/4 (95)	4-3/4 (121)	1 (25)	9-7/8 (251)	13/16 (21)	6-1/2 (165)	7-1/2 (190)	14 (356)

DIMENSIONS - Inches (mm)

MOTOR HP				A MAX.	B	H MAX.	J
1725	3450	PHASE	FRAME				
1/2		1	56	7-1/2 (190)	1-1/2 (38)	17 (432)	
1/2		3	56	7-1/2 (190)		16-1/2 (419)	
3/4		1	56	7-1/2 (190)	1-1/2 (38)	18 (457)	
3/4		3	56	7-1/2 (190)		17-1/2 (444)	
1		1	56	7-1/2 (190)	1-1/2 (38)	18-3/4 (476)	
1		3	56	7-1/2 (190)		17-1/2 (444)	
1-1/2		1	56	7-1/2 (190)	1-1/2 (38)	20 (508)	
1-1/2		3	56	7-1/2 (190)		18 (457)	
2		3	56	7-1/2 (190)		18-1/2 (470)	
3		3	182JM	11-3/4 (298)		28-5/8 (727)	3-3/8 (86)
	3	3	56	7-1/2 (190)		18-3/4 (476)	
	5	3	56	7-1/2 (190)		20-1/4 (514)	
	7-1/2	3	184JM	11-3/4 (298)		23-5/8 (600)	3-3/8 (86)
	10	3	213JM	14 (356)		27-5/8 (702)	4 (102)
	15	3	215JM	14 (356)		27-5/8 (702)	4 (102)

Dimensions are subject to change. Not to be used for construction purposes unless certified.