

Motors: 2-pole, single-phase
 Max. liquid temperature: 230 °F (110 °C)
 Min. liquid temperature: 36 °F (2 °C)
 Max. system pressure: 145 psi (10 bar)
 Closed system (F) and open system (BF)

| Model | Volts | Amps | Watts | Hp | Capacitor |
|---------------|-------|------|-------|------|-------------|
| UP 26-96 F/BF | 115 | 1.7 | 205 | 1/12 | 10µF/180 V |
| | 230 | 0.8 | 205 | 1/12 | 2.5µF/380 V |

Approvals

UP 26-96 F/BF

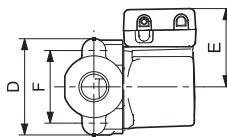
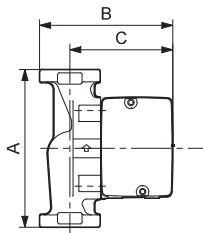


UP 26-96 BF



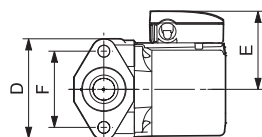
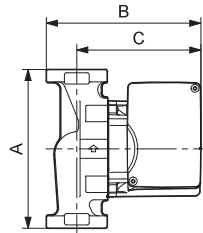
Flow range: 0-28 gpm
 Head range: 0-30 feet

UP 26-96 F



TM03 8533 1907

UP 26-96 BF



TM03 8543 1907

| Model type | Product number | | Dimensions [inches] | | | | | | Connection type and size | Shipping weight [lbs] |
|-------------|----------------|----------|---------------------|-------|--------|-------|-------|--------|---|-----------------------|
| | 115 V | 230 V | A | B | C | D | E | F | | |
| UP 26-96 F | 52722341 | 52722338 | 6 1/2 | 6 3/8 | 5 1/16 | 4 1/8 | 3 1/2 | 3 5/32 | GF 15/26 flange (2) 1/2" dia. bolt holes | 11 1/4 |
| UP 26-96 BF | 52722336 | 52722334 | 6 1/2 | 6 3/8 | 5 1/16 | 4 1/8 | 3 1/2 | 3 5/32 | GF 15/26 flange (2) 1/2" dia. bolt holes | 12.5 |

Note: Dimensions in inches unless otherwise noted.