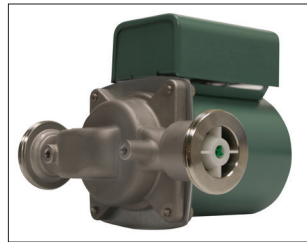
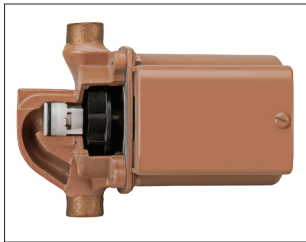
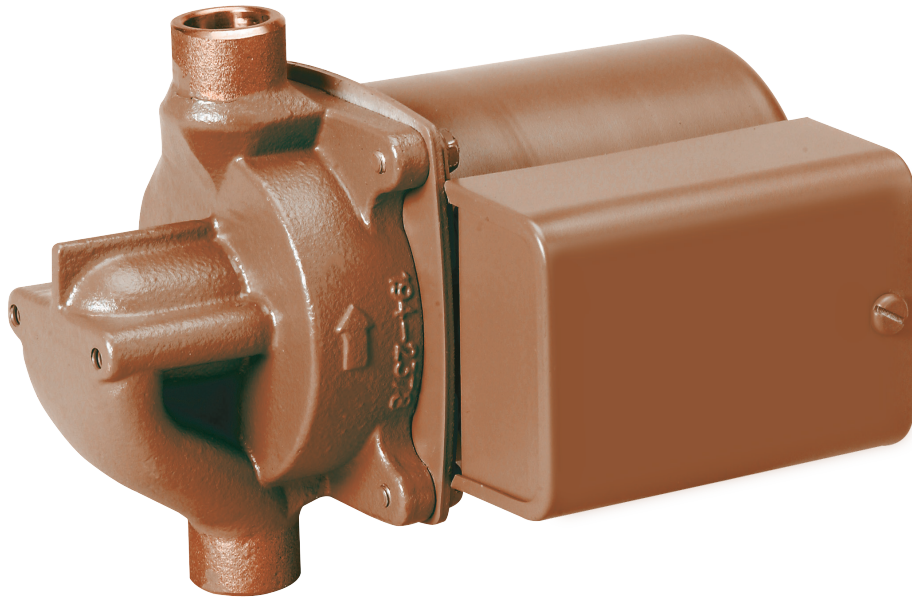


## Model 006-IFC® Cartridge Circulator

The compact Taco 006-IFC® with an Integral Flow Check is designed for circulating hot and chilled fresh water in open and closed loop applications. With its patented location at the impeller inlet, the IFC eliminates the added installation costs of a separate in-line flow check, simplifies piping, and improves system performance. The unique, replaceable cartridge contains all moving parts. Replacing the cartridge rebuilds the circulator. Its self-lubricating, maintenance free design provides quiet, efficient operation and unmatched reliability.



Low-Lead Compliant



# Submittal Data Information Model 006-IFC® Cartridge Circulator

Submittal Data # 101-067  
Supersedes: 03/26/13

Effective: 03/29/17

## Features

- Integral Flow Check (IFC) Patent# 5,664,939
  - Prevents gravity flow / reverse flow
  - Eliminates separate in-line flow check
  - Reduces installed cost
  - Improves system performance
  - Easy to service
- Unique replaceable cartridge
  - Field serviceable
- Unmatched reliability-Maintenance free
- Quiet, efficient operation
- Self lubricating, No mechanical seal
- Wide range of applications
- Bronze 1/2", 3/4" sweat or Stainless Steel with union connections

## Materials of Construction

Casing (Volute): .....Low-lead Bronze or St. Steel  
Integral Flow Check:  
Body, Plunger.....Acetal  
O-ring Seals.....EPDM  
Spring .....Stainless Steel  
Stator housing: .....Steel  
Cartridge: .....Stainless Steel  
Impeller:.....Non-metallic  
Shaft:.....Ceramic  
Bearings:.....Carbon  
O-Ring & Gaskets:.....EPDM - Chlorine resistant

## Model Nomenclature

BC - Bronze sweat connections, panel mount tappings  
SC - Stainless Steel, union connection, panel mount tappings  
IFC - Integral Flow Check

## Performance Data

Flow Range: 0 – 9 GPM  
Head Range: 0 – 8.5 Feet  
Minimum Fluid Temperature: 40°F (4°C)  
Maximum Fluid Temperature: 220°F (104°C)  
Maximum Working Pressure: 125 psi  
Connection sizes: 1/2", 3/4" sweat or union

## Certifications & Listings

 **FOR INDOOR USE ONLY**  
US LISTED

 **Low-Lead Compliant**  
Certified to NSF/ANSI 61 & 372

## Application

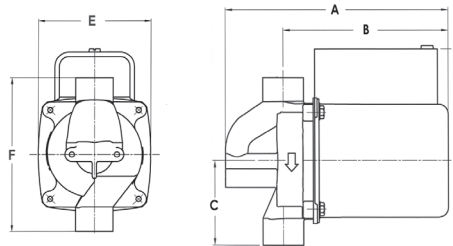
- Domestic Hot Water Recirculation
- Hydro-Air Fan Coils
- Heat Recovery Units
- Water Source Heat Pumps
- Potable Water Systems

The 006-IFC with an Integral Flow Check (IFC®) is designed for the circulation of hot or chilled fresh water in open or closed loop applications. The IFC feature simplifies piping, eliminates separate in-line flow check, reduces installation costs and improves system performance. With its patented location at the impeller inlet\*, the IFC is easy to service without removing the entire unit from system piping. The unique, replaceable cartridge contains all of the moving parts and allows for easy service instead of replacing the entire circulator.

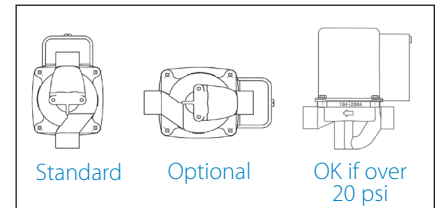
\* IFC is located in the discharge port on union connection model only

## Pump Dimensions & Weights

Models	Conn.	A		B		C		D		E		F		Ship Wt.	
		in.	mm	in.	mm	in.	mm	in.	mm	in.	mm	in.	mm	lbs.	Kg
006-BC7-1 IFC	1/2" Swt.	6	152	4-7/8	124	2-3/16	56	3-15/16	75	3-15/16	84	4-3/8	111	6.0	2.7
006-BC7-IFC	3/4" Swt.	6	152	4-7/8	124	2-3/16	56	3-15/16	75	3-15/16	84	4-3/8	111	6.0	2.7
006-SC7-IFC	Union	6	152	4-7/8	124	2-31/32	76	3-15/16	75	3-15/16	84	5-15/16	151	6.0	2.7

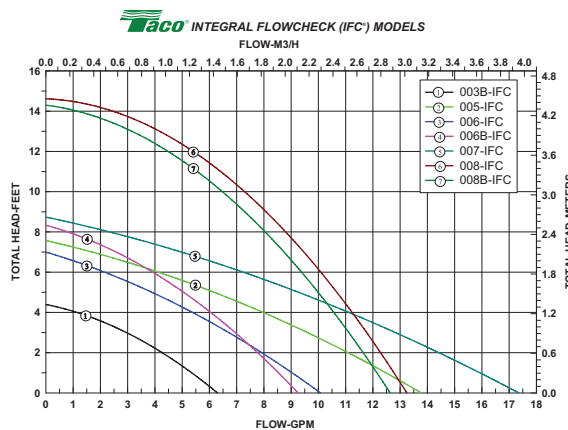


## Mounting Positions



## Electrical Data

Model	Volts	Hz	Ph	Amps	RPM	HP
All 006 Models	115	60	1	.52	3250	1/40
Motor Type	Permanent Split Capacitor Impedance Protected					
Motor Options	220/50/1, 220/60/1, 230/60/1, 100/110/50/60/1					



  
A Taco Family Company

Taco Inc., 1160 Cranston Street, Cranston, RI 02920 / (401) 942-8000 / Fax (401) 942-2360  
Taco (Canada) Ltd., 8450 Lawson Road, Unit #3, Milton, Ontario L9T 0J8 / (905) 564-9422 / Fax (905) 564-9436