



The World's Leading Producer of Air Movement Products

TD In-line Mixed Flow Duct Fans



Soler & Palau (S&P) USA and Canada are the most recent additions to, and are wholly owned subsidiaries of, Soler & Palau Ventilation Group which was founded in 1951. S&P is the World's leading producer of air movement products with an emphasis on developing and producing leading edge products to HVAC and other associated industries.

Over the past 50 years the company has expanded its product ranges and operations within Europe and beyond. Across the globe, S&P has established the most effective means through subsidiaries, distributors and partners for the distribution of products. Today S&P has facilities in many countries, among these are: Australia, Belgium, China, England, France, Germany, Holland, Italy, Portugal, Mexico, the USA and Canada. Worldwide, S&P is represented by an established and renowned network of distributors and partner companies.

TD-MIXVENT SERIES

Compact Size-TD Fans require minimum space

The S&P TD-MIXVENT series of in-line duct fans have been specially designed to maximize the airflow performance with minimal noise levels within the smallest and most compact of housing sizes. This makes the TD-MIXVENT series the ultimate solution for small to medium sized ventilation installations which require a high airflow to pressure ratio and occupy only the minimum space possible. Example: false ceiling voids, cabinets and many other limited space environments.



Internal parts can be easily removed for mounting & servicing

Easy to Install...fit and forget!

All the models in the TD-MIXVENT range have been designed with the professional contractor/engineer in mind. All models include a "removable body" feature that enables the motor-impeller assembly to be completely removed or replaced without the need to interfere with the attached ducting.

Multitude of features-high specification

All models within the TD-MIXVENT range incorporate a powerful mixed flow impeller and internal air vanes located at the discharge end of the fan housing. This impeller and guide vane combination provides a smooth laminar air flow which in turn minimizes turbulence and noise, and generates an **excellent air flow to pressure performance ratio**.

Description

The MIXVENT system has been designed to compliment the TD-MIXVENT range of in-line fans. All of the TD-fans include the combination of a powerful motor, factory installed, to a mixed flow impeller. This motor and impeller combination enables the TD-fans to deliver high airflow performances with minimum noise generation against high static pressures typically found in ducted ventilation systems. The unique design of the support brackets, allows the motor and impeller assembly to be fitted or removed without dismantling the adjacent ducting and therefore, facilitating any installation or maintenance. The internal aerodynamic design of the TD-MIXVENT fan enables the unit to generate large air volumes and pressures with the minimum of in-duct or radiated noise. As an additional standard advantage, TD-MIXVENT fans are fitted with a direct connection two-speed motor. The TD-fans offer the ideal in-line duct fan solution for a wide range of HVAC ventilation applications.

TD-MIXVENT Fan Kits

The TD ventilation kits enable simple and fast installation of a complete ventilation system. The kits include the powerful TD in-line fan providing efficient exhaust for bathrooms, toilets, washrooms and any other applications that require the removal of bad odors, stuffy and humid air. In addition to the fan, the kits include an interior round grill (BOR-100); exterior louvered shutter; 16 feet of flexible ducting (GSA-100) and a roll of tough duct tape to provide the complete hardware required for a given ventilation system.



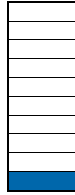
Mixed Flow Fans vs. Axial and Centrifugal Fans

Axial Fans

- Low noise levels
- High air volumes
- Very little static pressure capability*

Noise Level

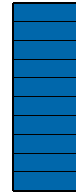
High



Low

Air Volume

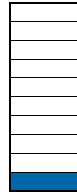
High



Low

Static Pressure

High



Low

Centrifugal Fans

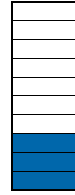
- Higher noise levels
- Lower air volumes
- Very high static pressure capability*

High



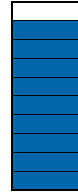
Low

High



Low

High

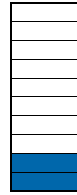


Low

Mixed Flow Fans**

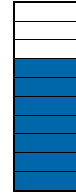
- Low noise levels
- High air volumes
- Significant static pressure capability*

High



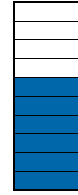
Low

High

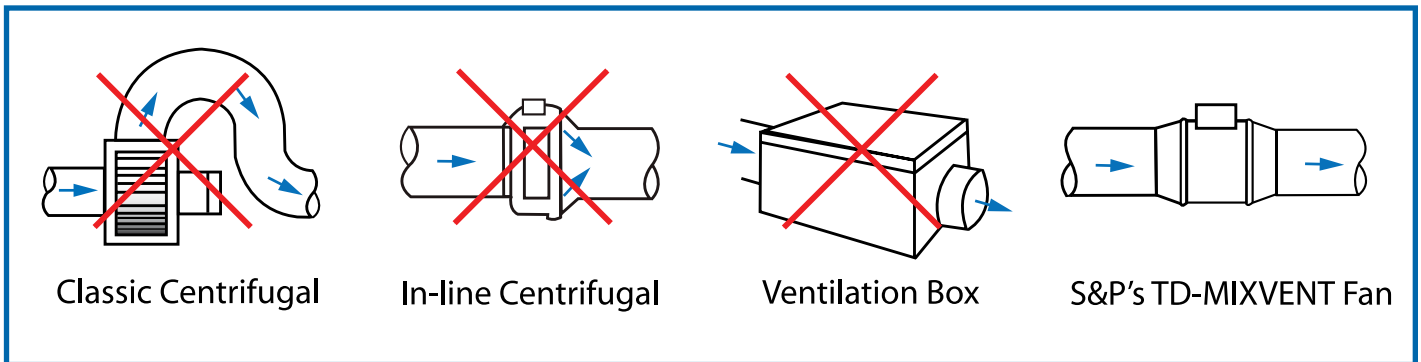


Low

High



Low



*Static pressure is the ability of the fan to overcome resistance such as long or complicated duct runs.

Mixed flow fans (TD series) offer the best of both axial and centrifugal fans and are suitable for most air movement applications. S&P's **TD-MIXVENT Series has all the benefits of a mixed flow fan, plus it requires minimal space and it is easy to install.



General details of the TD-MIXVENT range



Low profile mixed flow fans, manufactured in plastic material (up to model 200) or in **galvanized steel** sheet protected with Epoxy paint (model 250 and up), with external terminal box, removable motor-impeller assembly and adjustable single-phase motor, Class B, IP44.



Supply/Exhaust for ducts ■ TD-MIXVENT

Construction characteristics

	100	100x	125	150	200	200x	250	315	355	400
Polypropylene housing	•	•	•	•	•	•				
Steel housing with epoxy coating							•	•	•	•
ABS fan blades	•	•	•	•		•				
Aluminum fan blades					•		•	•	•	•
Thermal link via fuse	•	•	•							
Thermal link with automatic reset				•	•	•	•	•	•	•
Permanently lubricated ball bearings	•	•	•	•	•	•	•	•	•	•
Speed controllable 2-speed motor	•	•	•	•	•	•	•	•		

The extensive range of the TD-MIXVENT series makes it an effective solution for a wide range of residential and light commercial ventilation installations.



Low Profile



The low profile of the fans in the TD-MIXVENT range makes them the ideal product for installations with low height limits, such as the case of suspended ceilings.

Easy to Install



Secure the support.



Make the connections.



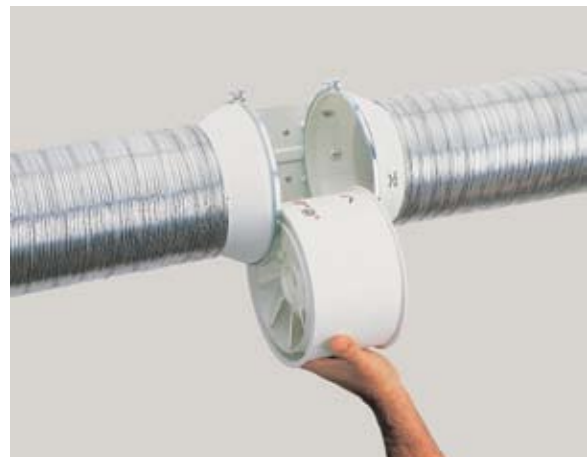
Connect the ducts.

Flexibility in Location



The fans can be connected at any point along the ventilation duct: along the duct or at the end.

Easy Maintenance



Removable body, for repair or cleaning, **without the need to touch the ducts.**





Performance characteristics

All models include a direct two speed motor connection, except TD-355 and 400.

Model	Nom. RPM	Volts	Max. Watts	Speed	CFM v Static Pressure (SP) Ins. WG							Max. SP	Max operating temp. (°F)	Weight (lbs)	Duct Dia. Ins.
					0"	0.125"	0.25"	0.375"	0.5"	0.75"	1.0"				
TD-100	2431	120	23	LS	97	81	51	-	-	-	-	.4	104	2	4"
	2516	120	26	HS	101	85	57	-	-	-	-	.4	104	2	4"
TD-100x	1556	120	20	LS	100	77	48	-	-	-	-	.375	104	4.4	4"
	2096	120	33	HS	135	113	90	53	-	-	-	.55	104	4.4	4"
TD-125	1633	120	24	LS	149	110	73	-	-	-	-	.35	104	4.4	5"
	2146	120	38	HS	197	168	133	86	22	-	-	.55	104	4.4	5"
TD-150	1709	120	54	LS	218	193	163	128	105	24	-	.8	140	4.4	6"
	2289	120	65	HS	293	273	250	227	206	131	35	1.15	140	4.4	6"
TD-200	2322	120	139	LS	476	422	373	317	260	40	-	1.38	140	8.8	8"
	2781	120	184	HS	538	495	458	418	367	190	10	1.625	140	8.8	8"
TD-200x	1935	120	122	LS	419	393	363	327	295	215	107	1.4	140	8.8	8"
	2467	120	169	HS	478	457	432	402	372	285	192	1.75	140	8.8	8"
TD-250	2400	115	162	LS	541	475	418	355	295	218	170	2.03	140	19.8	10"
	3200	115	241	HS	754	715	680	640	606	520	405	2.53	140	19.8	10"
TD-315	2000	115	208	LS	751	670	545	420	285	190	130	1.62	140	30.9	12.4"
	2500	115	335	HS	1050	990	932	850	770	600	420	2.95	140	30.9	12.4"
TD-355	1400	115	464	-	1829	1740	1620	1530	1450	1190	-	1.1	140	43	14"
TD-400	1400	115	756	-	2630	2490	2360	2240	2100	1750	350	1.2	140	58	16"



Soler & Palau USA certifies that the TD range shown herein is licensed to bear the AMCA Seal. The ratings shown are based on tests and procedures performed in accordance with AMCA Publication 211 and comply with the requirements of the AMCA Certified Ratings Program.



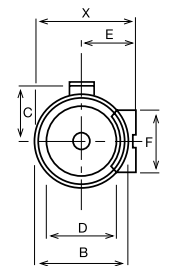
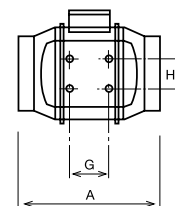
The TD-MIXVENT Series fans are California Title 24 compliant and meet ASHRAE 62.2 when installed with 3 way switch and remotely mounted speed control.

TD 250 & 315 are UL listed for outdoor use.

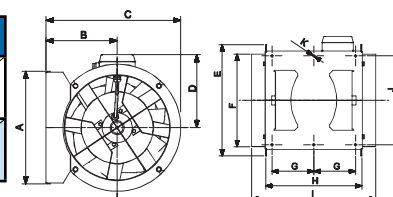
LS= Low Speed
HS = High Speed

Dimensions (inches/mm)

Model	X	A	B	C	D	E	F	G	H
TD-100	5 15/16	9 1/8	5 7/16	3 3/4	3 7/8	3 1/4	3 3/4	1 7/8	2 1/16
	151	232	138	96	98	82	95	48	52
TD-100x	7 3/8	11 15/16	6 15/16	4 1/2	3 13/16	3 15/16	3 9/16	3 1/8	2 3/8
	188	303	176	115	97	100	90	80	60
TD-125	7 3/8	10 3/16	6 15/16	4 1/2	4 13/16	3 15/16	3 9/16	3 1/8	2 3/8
	188	258	176	115	123	100	90	80	60
TD-150	8 3/8	11 5/8	7 7/8	5	5 13/16	4 7/16	5 1/8	3 1/8	2 3/8
	212	295	200	127	147	112	130	80	60
TD-200	9 3/16	11 7/8	8 9/16	5 9/16	7 13/16	4 7/8	5 1/2	3 15/16	3 11/16
	233	302	217	141	198	124	140	100	94
TD-200x	9 3/16	11 7/8	8 9/16	5 9/16	7 13/16	4 7/8	5 1/2	3 15/16	3 11/16
	233	302	217	141	198	124	140	100	94
TD-250	11 7/16	15 3/16	10 11/16	7 9/16	9 3/4	6 1/8	6 5/8	5 11/16	5 1/2
	291	386	272	192	248	155	168	145	140
TD-315	14	17 11/16	13 1/4	8 13/16	12 5/16	7 3/8	8 1/4	7 3/16	7
	356	450	336	224	312	188	210	182	178



Model	A	B	C	D	E	F	G	H	I	J	K
TD-355	14 5/6	9 3/8	17 3/4	8 5/6	16 7/9	13 8/9	5 8/9	14 1/2	18 2/3	13 3/8	1/3
	377	238	451	224	426	354	150	368	474	340	8.5
TD-400	16	9 4/5	19 3/8	10 1/2	19 1/6	15 5/7	6 2/7	16 3/4	21 5/9	14 4/7	1/3
	407	249	492	267	487	399	160	425	547	370	8.5



Sound characteristics

Fan sound levels are measured in sones. At this time there are no sone level test standards available through HVI due to the fact that remote mounted fan noise levels are in proportion to the following: type of duct, length of duct, fan distance from the intake source and other miscellaneous factors. However, it is generally accepted that remote mounted venting is usually quieter than standard (in room) venting.