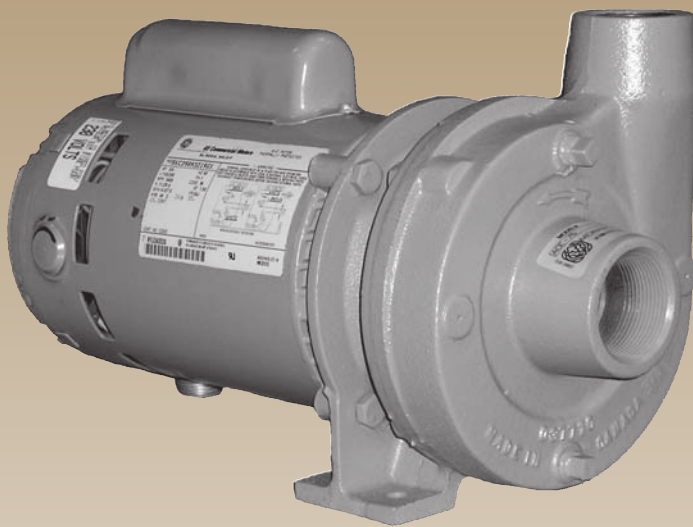


ACE Series



Applications

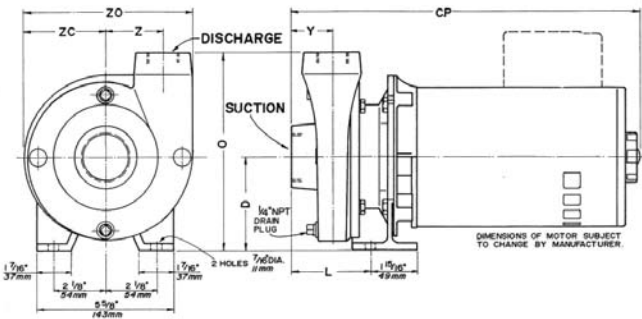
Ideal for hot water circulation transfer as well as irrigation and industrial applications.

Features

- **POWER** - 3600 RPM, single phase; C-face industry standard motors.
- **PORTS** - For air bleeding when priming; for draining to prevent frost damage.
- **SHAFT FLINGER** - Combined with large drain hole in adapter bracket prevents moisture from damaging bearings.
- **SEAL** - High temperature (200°F) mechanical seals are standard on the ACE series.
- **CASING** - Cast gray iron, thick wall.
- **IMPELLER** - The ACE series use cast gray iron impellers.



Dimensional Outline



Model	Suction NPT	Discharge NPT	CP	D	L	O	Y	Z	ZC	ZO
ACE-50	1 1/4"	1"	12.56	3.81	3.25	8.06	1.69	2.41	3.38	7.06
ACE-75	1 1/2"	1 1/4"	13.94							
ACE-100			14.25							
ACE-150	2"	1 1/2"	15.13	4.81	3.56	8.81	1.88	2.66	3.75	7.75
ACE-200			15.63							

*Dimensions measured in inches

Specifications

Model No.	Item No.	HP	Volts	Suct. NPT	Discharge	Total Head in Feet										Ship Wt. (lbs.)
						20	30	40	50	60	70	80	100	120		
						Capacities in U.S. GPM										
ACE-50	615030	1/2	1/60/115/230V	1 1/4"	1"	-	51	43	35	24	8	-	-	-	32	
ACE-75	615040	3/4	1/60/115/230V	1 1/2"	1 1/4"	-	-	54	47	39	30	19	-	-	36	
ACE-100	615050	1	1/60/115/230V	1 1/2"	1 1/4"	-	-	60	56	51	44	34	1	-	39	
ACE-150	615060	1 1/2	1/60/115/230V	2"	1 1/2"	-	-	-	-	60	55	48	27	-	47	
ACE-200	615070	2	1/60/115/230V	2"	1 1/2"	-	-	-	-	-	-	61	46	23	53	

Performance Chart

Less Power Kits

Model	Order No.	HP	Suct. NPT	Disch. NPT	Frame Size	Ship Wt. (lbs.)
ACE-50LP	615037	1/2	1 1/4"	1"	*56J	10
ACE-75LP	615047	3/4	1 1/2"	1 1/4"	*56J	10
ACE-100LP	615057	1	1 1/2"	1 1/4"	*56J	10
ACE-150LP	615068	1 1/2	2"	1 1/2"	*56J	12
ACE-200LP	615076	2	2"	1 1/2"	*56J	12

*Pumps use 56J C face motors.

Performance Data

