

INTRODUCTION

Cook power roof and wall ventilators provide maximum performance and durability in a wide variety of commercial and industrial air moving applications. Exhaust applications include general ventilation, fume-hood, paint booth and smoke control systems.

- AC unit top cap assembly is designed to provide weather protection for the motor and drive components while maintaining easy, tool free access for inspection and maintenance.
- Standard lifting lugs, located under the top cap, provide for safe, fast and efficient lifting of the unit to a rooftop.
- One piece fan base, which includes a high-efficiency inlet venturi and continuously welded curb cap corners, insures weathertight conditions.
- Spun aluminum baffle is designed to provide smooth, turbulent-free airflow.
- Wheels are centrifugal type featuring non-overloading, backward-inclined blades and a tapered inlet shroud.
- Accurate performance is assured through compliance with the AMCA Certified Ratings Program. All units are licensed to bear the AMCA Certified Ratings Seal for Air and Sound Performance.

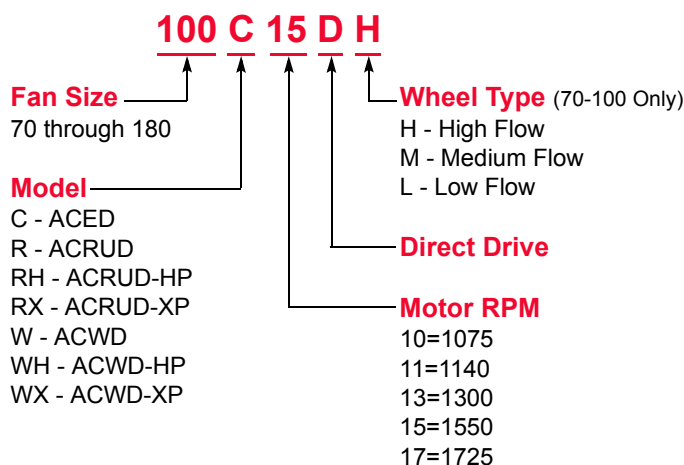
ACRU Upblast Centrifugal Exhaust Ventilator



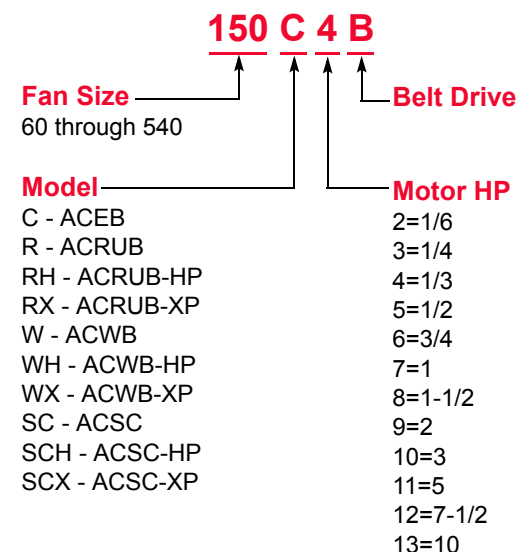
- Typically used in roof mounted applications where it is necessary to eject contaminated air away from a rooftop.
- ACRU available in 8 direct drive sizes and 17 belt drive sizes. Capacities range from 200 to 28,800 CFM, with static pressures from 0 to 1-1/2 inches.
- ACRU-HP available in 4 direct drive and 11 belt drive high pressure sizes. Capacities range from 700 to 19,200 CFM, with static pressures from 1/4 to 2-1/2 inches.
- ACRU-XP available in 3 direct drive and 10 belt drive extended pressure sizes. Capacities range from 800 to 11,000 CFM, with static pressures from 1 to 4-1/2 inches.

Model Number Chart

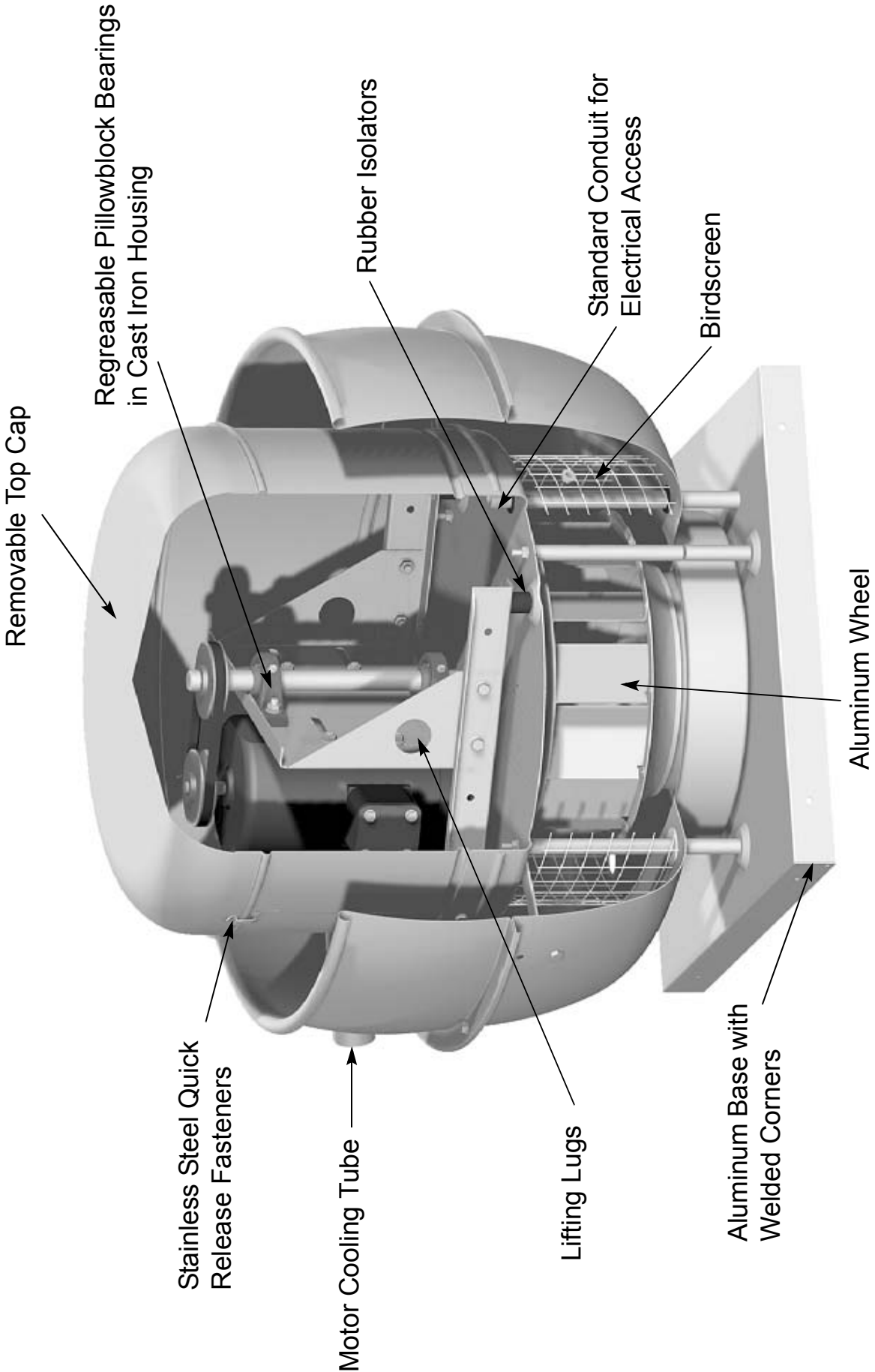
Direct Drive Models



Belt Drive Models



ACRUB
Upblast Centrifugal Exhaust Ventilator



Description - Fan shall be a spun aluminum, roof mounted, belt driven, upblast centrifugal exhaust ventilator.

Certifications - Fan shall be manufactured at an ISO 9001 certified facility. Fan shall be listed by Underwriters Laboratories (UL 705) and UL listed for Canada (cUL 705). Fan shall bear the AMCA Certified Ratings Seal for Sound and Air Performance.

Construction - Fan shall be of bolted and welded construction utilizing corrosion resistant fasteners. The spun aluminum structural components shall be constructed of minimum 16 gauge marine alloy aluminum, bolted to a rigid aluminum support structure. The aluminum base shall have a one piece inlet spinning and continuously welded curb cap corners for maximum leak protection. The windband shall have a rolled bead for added strength. A two piece top cap shall have stainless steel quick release latches to provide access into the motor compartment without the use of tools. An integral conduit chase shall be provided into the motor compartment to facilitate wiring connections. The motor, bearings and drives shall be mounted on a minimum 14 gauge steel power assembly, isolated from the unit structure with rubber vibration isolators. These components shall be enclosed in a weather-tight compartment, separated from the exhaust airstream. Lifting lugs shall be provided to help prevent damage from improper lifting. Unit shall bear an engraved aluminum nameplate. Nameplate shall indicate design CFM, static pressure and maximum fan RPM. Unit shall be shipped in ISTA Certified Transit Tested Packaging.

Wheel - Wheel shall be centrifugal backward inclined, constructed of 100 percent aluminum, including a precision machined cast aluminum hub. Wheel inlet shall overlap an aerodynamic aluminum inlet cone to provide maximum performance and efficiency. Wheel shall be balanced in accordance with AMCA Standard 204-96, Balance Quality and Vibration Levels for Fans.

Motor - Motor shall be heavy duty type with permanently lubricated sealed ball bearings and furnished at the specified voltage, phase and enclosure.

Bearings - Bearings shall be designed and individually tested specifically for use in air handling applications. Construction shall be heavy duty regreasable ball type in a cast iron pillowblock housing selected for a minimum L50 life in excess of 200,000 hours at maximum cataloged operating speed.

Belts and Drives - Belts shall be oil and heat resistant, non-static type. Drives shall be precision machined cast iron type, keyed and securely attached to the wheel and motor shafts. Drives shall be sized for 150 percent of the installed motor horsepower. The variable pitch motor drive must be factory set to the specified fan RPM.

Product - Fans shall be models ACRUB, ACRUB-HP or ACRUB-XP as manufactured by Loren Cook Company of Springfield, Missouri.

Upblast Centrifugal Exhaust Ventilator Roof Mounted Belt Drive



Loren Cook Company certifies that the ACRUB, ACRUB-HP and ACRUB-XP shown herein are licensed to bear the AMCA Seal. The ratings shown are based on tests and procedures performed in accordance with AMCA Publication 211 and AMCA Publication 311 and comply with the requirements of the AMCA Certified Ratings Program.

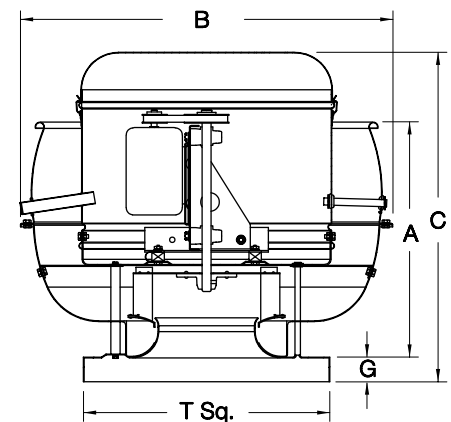


Type ACRUB, ACRUB-HP and ACRUB-XP are furnished standard with UL 705 and cUL 705 listings (Power Ventilator/ZACT) when furnished with factory supplied motor.

ACRUB Dimension Data

Size	A	B	C			G	T Sq.	Roof Opening Square*	Ship. Wt.
			ACRUB	ACRUB-HP	ACRUB-XP				
100	12-1/2	25-1/4	20-3/16	-	-	2	18	13-1/2	30
120	19-1/16	30-3/16	28-1/4	-	-	2	20	15-1/2	61
135	19-1/16	30-3/16	28-5/8	-	-	2	20	15-1/2	66
150	20-15/16	34-11/16	30-1/4	27-1/2	-	2	24	19-1/2	77
165	20-15/16	34-11/16	30-3/4	27-3/4	26-11/16	2	24	19-1/2	83
180	24-13/16	39-7/16	35-7/8	33-3/8	31-9/16	3	30	25-1/2	100
195	24-13/16	39-7/16	36-3/8	33-1/2	32-1/8	3	30	25-1/2	110
210	25-15/16	45-1/4	38-3/8	35-3/8	32-3/4	3	30	25-1/2	220
225	25-15/16	45-1/4	38-1/8	35-1/2	33-5/16	3	30	25-1/2	242
245	28-1/2	49-1/4	41-1/16	37-5/16	34-1/16	3	30	25-1/2	264
270	28-1/2	49-1/4	41-1/16	37-5/16	35	3	36	31-1/2	286
300	33-7/8	54-1/4	49-15/16	45-15/16	41-7/16	3	36	31-1/2	336
330	34-1/8	54-1/4	50-7/16	46-11/16	43-1/8	3	42	37-1/2	374
365	36-3/8	64-1/4	52-7/16	48-7/16	44-1/4	3	42	37-1/2	420
402	37-7/8	64-1/4	54-11/16	-	-	3	48	43-1/2	484
445	31-5/8	76-1/4	57-3/16	-	-	3	54	49-1/2	556
490	33-3/8	76-1/4	58-1/16	-	-	3	54	49-1/2	715

All dimensions in inches. *Roof opening size for curbs supplied by Loren Cook Company only. Weights in pounds, less motor.



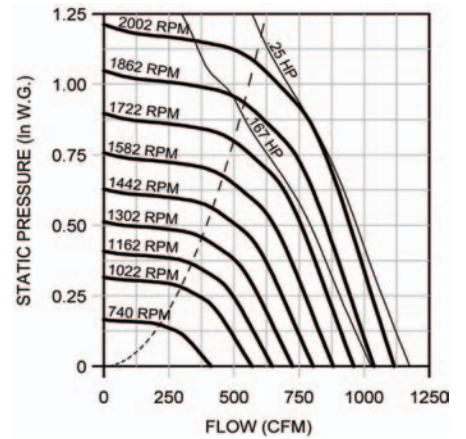
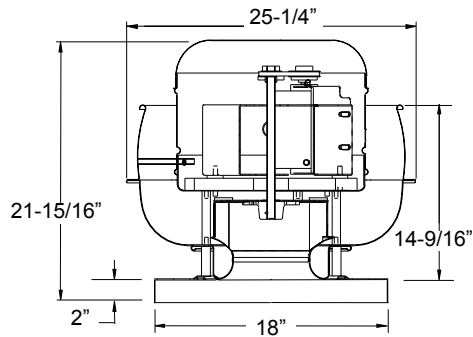
100, 120, 135 ACRUB/ACSC Data

100 ACRUB/ACSC

Wheel Diameter - 10"
Tip Speed (FPM) - 2.6 x RPM
Maximum RPM - 2002
Maximum BHP - $.031 \times (\text{RPM}/1000)^3$
Maximum Motor Frame - 48
Approx. Ship Wt. (Less Motor) - 30 lbs.
Roof Curb - RCG, RCA 16
Roof Opening - 13-1/2" Sq.

Material Gauges

Top Cap Lid - .050
Top Cap Cylinder - .040
Baffle - .080
Base - .063

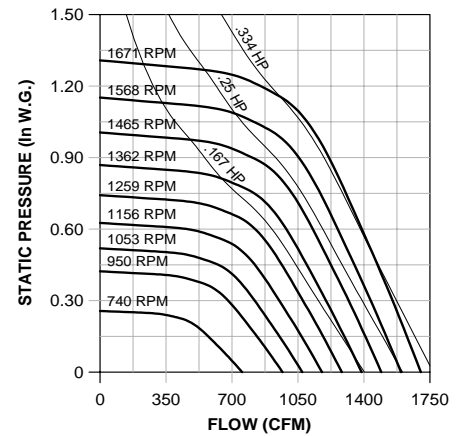
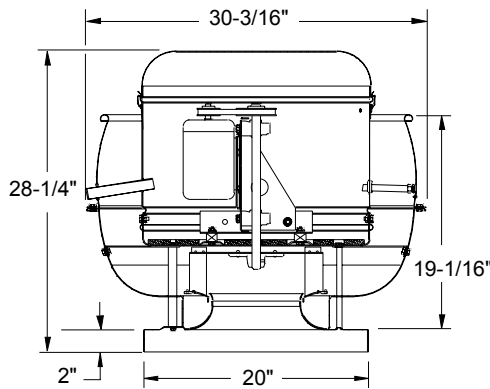


120 ACRUB/ACSC

Wheel Diameter - 12"
Tip Speed (FPM) - 3.1 x RPM
Maximum RPM - 1671
Maximum BHP - $.072 \times (\text{RPM}/1000)^3$
Maximum Motor Frame - 56
Approx. Ship Wt. (Less Motor) - 61 lbs.
Roof Curb - RCG, RCA-18
Roof Opening - 15-1/2 inches

Material Gauges

Top Cap Lid - .050
Top Cap Cylinder - .040
Baffle - .063
Base - .063

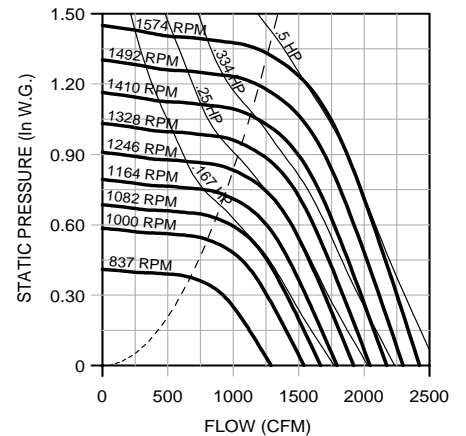
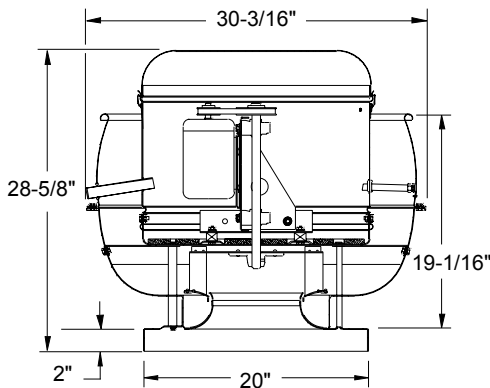


135 ACRUB/ACSC

Wheel Diameter - 13.5"
Tip Speed (FPM) - 3.5 x RPM
Maximum RPM - 1574
Maximum BHP - $.13 \times (\text{RPM}/1000)^3$
Maximum Motor Frame - 56
Approx. Ship Wt. (Less Motor) - 66 lbs.
Roof Curb - RCG, RCA - 18
Roof Opening - 15-1/2 inches

Material Gauges

Top Cap Lid - .050
Top Cap Cylinder - .040
Baffle - .063
Base - .063



Performance certified is for Installation Type A: free inlet, free outlet. Power rating (BHP) does not include transmission losses. Performance ratings do not include the effects of appurtenances (accessories) in the airstream. The sound ratings shown are loudness values in fan sones at 5 ft. (1.5m) in a hemispherical free field calculated per AMCA Standard 301. Values shown are for Installation Type A: free inlet fan sone levels.

100 ACRUB / ACSC

Catalog Number	Mtr. HP/ Drv. Wt.	Fan RPM	Tip Speed	0.000" SP		0.125" SP		0.250" SP		0.375" SP		0.500" SP		0.625" SP		0.750" SP		0.875" SP		1.000" SP		1.250" SP		1.500" SP			
				Sone	BHP	Sone	BHP	Sone	BHP	Sone	BHP	Sone	BHP	Sone	BHP	Sone	BHP	Sone	BHP	Sone	BHP	Sone	BHP	Sone	BHP	Sone	BHP
100R2B 100SC2B	1/6* 15 lbs.	740	1937	412		279																					
				1.7	.01	1.6	.01																				
		940	2460	524		433																					
				3.5	.02	3.3	.02																				
		1140	2984	635		560		479																			
				5.8	.04	5.7	.04	5.3	.05																		
		1340	3508	747		683		619		542																	
8.0	.06			7.9	.07	7.7	.07	7.3	.07																		
1540	4031	858		802		747		690		619		469															
		9.8	.10	9.7	.10	9.6	.11	9.3	.11	8.9	.11	8.5	.10														
1742	4560	970		921		872		824		772		709		592													
		11.7	.14	11.6	.15	11.5	.15	11.4	.16	11.1	.16	10.7	.16	10.3	.16												
100R3B 100SC3B	1/4* 15 lbs.	1807	4730	1007		959		912		865		817		761		678		531									
				12.4	.16	12.3	.16	12.3	.17	12.2	.17	11.9	.18	11.5	.18	11.2	.18	10.9	.16								
		1872	4900	1043		997		951		906		860		810		745		626									
				13.1	.17	13.1	.18	13.0	.19	12.9	.19	12.7	.19	12.4	.20	12.1	.20	11.8	.19								
1937	5071	1079		1035		991		947		903		856		801		714		576									
		14.1	.19	14.0	.20	13.9	.21	13.8	.21	13.6	.21	13.2	.22	13.0	.22	12.77	.22	12.4	.20								
2002	5241	1115		1072		1030		988		945		901		851		786		671									
		15.2	.21	15.1	.22	15.0	.23	14.9	.23	14.8	.24	14.4	.24	14.0	.25	13.6	.25	13.3	.24								

*1/6 & 1/4 HP motor available only in single phase ODP type.

120 ACRUB / ACSC

Catalog Number	Mtr. HP/ Drv. Wt.	Fan RPM	Tip Speed	0.000" SP		0.125" SP		0.250" SP		0.375" SP		0.500" SP		0.625" SP		0.750" SP		0.875" SP		1.000" SP		1.250" SP		1.500" SP			
				Sone	BHP	Sone	BHP	Sone	BHP	Sone	BHP	Sone	BHP	Sone	BHP	Sone	BHP	Sone	BHP	Sone	BHP	Sone	BHP	Sone	BHP	Sone	BHP
120R2B 120SC2B	1/6 15 lbs.	904	2840	921		803		673																			
				5.2	.05	5.0	.05	4.4	.05																		
		1037	3257	1056		955		845		722																	
				7.0	.07	7.0	.08	6.5	.08	5.9	.08																
1170	3675	1192		1103		1008		908		788																	
		9.2	.10	9.2	.11	8.9	.11	8.2	.12	7.6	.12																
1302	4090	1326		1247		1163		1075		983		871															
		11.4	.14	11.4	.15	11.1	.16	10.7	.16	10.0	.16	9.4	.16														
120R3B 120SC3B	1/4 15 lbs.	1367	4294	1393		1317		1238		1154		1069		975		832											
				12.2	.16	12.2	.17	12.0	.18	11.7	.18	11.0	.19	10.4	.19	10.0	.19										
		1432	4498	1459		1386		1312		1233		1152		1067		964		747									
13.1	.19			13.1	.20	12.9	.21	12.6	.21	12.0	.21	11.6	.22	11.3	.22	10.9	.20										
1496	4699	1524		1455		1384		1309		1232		1153		1066		944											
		14.0	.21	14.0	.22	13.9	.23	13.6	.24	13.2	.24	12.8	.25	12.5	.25	12.2	.25										
120R4B 120SC4B	1/3 19 lbs.	1549	4866	1578		1511		1443		1371		1297		1222		1142		1045		869							
				14.9	.24	14.9	.25	14.9	.26	14.5	.26	14.2	.27	13.8	.27	13.5	.27	13.2	.28	12.9	.26						
		1602	5032	1632		1567		1502		1433		1361		1289		1214		1130		1015							
15.8	.26			15.8	.27	15.8	.28	15.5	.29	15.1	.30	14.8	.30	14.5	.30	14.2	.30	13.9	.30								
1655	5199	1686		1623		1560		1494		1425		1355		1284		1208		1116									
		16.6	.29	16.6	.30	16.6	.31	16.3	.32	16.0	.32	15.6	.33	15.3	.33	15.0	.34	14.7	.34								

135 ACRUB / ACSC

Catalog Number	Mtr. HP/ Drv. Wt.	Fan RPM	Tip Speed	0.000" SP		0.125" SP		0.250" SP		0.375" SP		0.500" SP		0.625" SP		0.750" SP		0.875" SP		1.000" SP		1.250" SP		1.500" SP	
				Sone	BHP	Sone	BHP	Sone	BHP	Sone	BHP	Sone	BHP	Sone	BHP	Sone	BHP	Sone	BHP	Sone	BHP	Sone	BHP	Sone	BHP
135R2B 135SC2B	1/6 15 lbs.	837	2958	1289		1152		1001		676															
				5.7	.06	5.6	.07	5.0	.08	4.4	.07														
		957	3382	1474		1355		1230		1081															
7.6	.10			7.5	.11	7.1	.11	6.5	.11																
1078	3809	1660		1555		1447		1330		1184															
		9.8	.14	9.8	.15	9.5	.16	8.9	.16	8.3	.16														
135R3B 135SC3B	1/4 15 lbs.	1132	4000	1744		1643		1541		1432		1308		1113											
				11.0	.16	11.0	.17	10.7	.18	10.1	.18	9.5	.19	8.9	.19										
		1186	4191	1827		1731		1634		1532		1420		1275		971									
12.2	.18			12.2	.20	12.0	.21	11.5	.21	10.8	.22	10.2	.22	9.7	.20										
1240	4382	1910		1819		1726		1629		1527		1406		1219											
		13.5	.21	13.5	.22	13.3	.23	12.9	.24	12.2	.24	11.6	.25	11.0	.24										
135R4B 135SC4B	1/3 19 lbs.	1306	4615	2012		1925		1837		1747		1652		1548		1415		1182							
				14.7	.24	14.7	.26	14.6	.27	14.1	.28	13.6	.28	12.9	.29	12.4	.29	12.0	.28						
		1371	4845	2112		2029		1946		1860		1772		1677		1569		1419		1130					
15.7	.28			15.7	.30	15.7	.31	15.3	.32	14.9	.33	14.2	.33	13.8	.33	13.5	.33	13.1	.30						
135R5B 135SC5B	1/2 23 lbs.	1473	5206	2269		2192		2115		2036		1955		1871		1781		1677		1538					
				17.4	.35	17.4	.37	17.4	.38	17.1	.40	16.8	.40	16.5	.41	16.1	.41	15.7	.41	15.4	.42				
		1574	5562	2424		2353		2280		2207		2132		2055		1975		1889		1791		1470			
19.5	.43			19.5	.45	19.5	.46	19.3	.48	19.0	.49	18.7	.49	18.3	.50	18.0	.50	17.7	.51	17.1	.49				

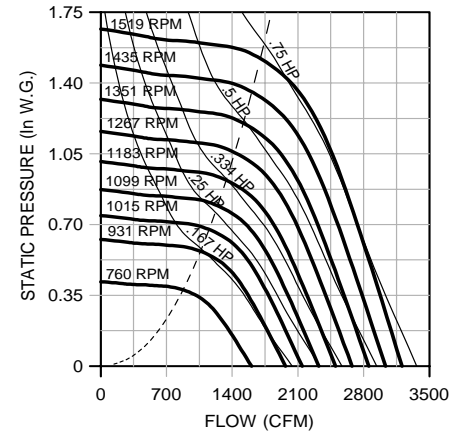
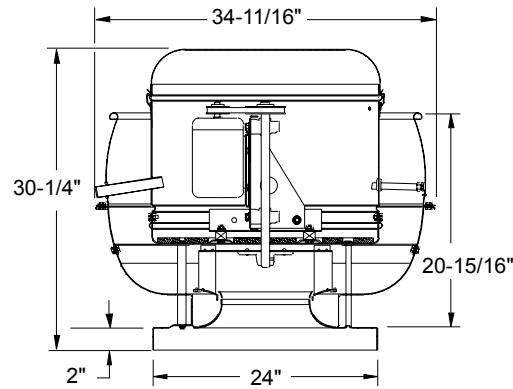
Performance certified is for Installation Type A: free inlet, free outlet. Power rating (BHP) does not include transmission losses. Performance ratings do not include the effects of appurtenances (accessories) in the airstream. The sound ratings shown are loudness values in fan sones at 5 ft. (1.5m) in a hemispherical free field calculated per AMCA Standard 301. Values shown are for Installation Type A: free inlet fan sone levels.

150 ACRUB / ACSC

Wheel Diameter - 15"
Tip Speed (FPM) - 3.9 x RPM
Maximum RPM - 1520
Maximum BHP - .22 x (RPM/1000)³
Maximum Motor Frame - 56
Approx. Ship Wt. (Less Motor) - 77 lbs.
Roof Curb - RCG, RCA - 22
Roof Opening - 19-1/2 inches

Material Gauges

Top Cap Lid - .050
Top Cap Cylinder - .040
Baffle - .063
Base - .063

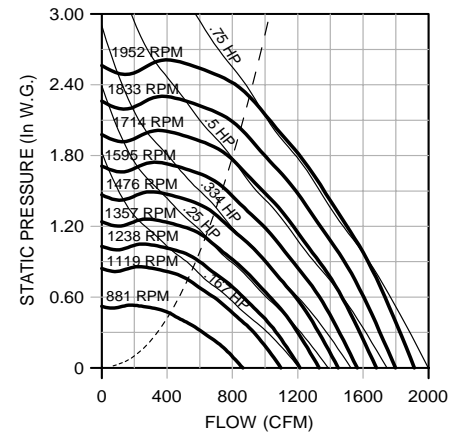
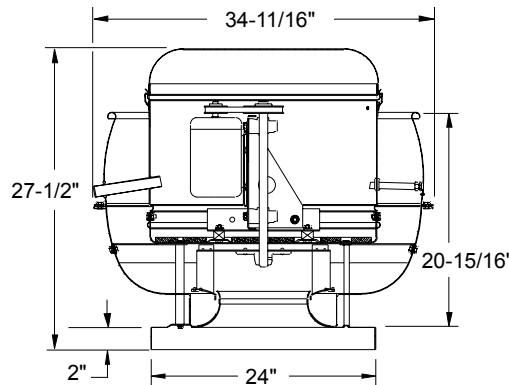


150 ACRUB-HP / ACSC-HP

Wheel Diameter - 15"
Tip Speed (FPM) - 3.9 x RPM
Maximum RPM - 1952
Maximum BHP - .10 x (RPM/1000)³
Maximum Motor Frame - 143T
Approx. Ship Wt. (Less Motor) - 77 lbs.
Roof Curb - RCG, RCA - 22
Roof Opening - 19-1/2 inches

Material Gauges

Top Cap Lid - .050
Top Cap Cylinder - .040
Baffle - .063
Base - .063



Performance certified is for Installation Type A: free inlet, free outlet. Power rating (BHP) does not include transmission losses. Performance ratings do not include the effects of appurtenances (accessories) in the airstream. The sound ratings shown are loudness values in fan sones at 5 ft. (1.5m) in a hemispherical free field calculated per AMCA Standard 301. Values shown are for Installation Type A: free inlet fan sone levels.

150 ACRUB / ACSC

Catalog Number	Mtr. HP/ Drv. Wt.	Fan RPM	Tip Speed	0.000" SP		0.125" SP		0.250" SP		0.375" SP		0.500" SP		0.625" SP		0.750" SP		0.875" SP		1.000" SP		1.250" SP		1.500" SP	
				Sone	BHP	Sone	BHP	Sone	BHP	Sone	BHP	Sone	BHP	Sone	BHP	Sone	BHP	Sone	BHP	Sone	BHP	Sone	BHP	Sone	BHP
150R2B	1/6	760	2984	1606		1439		1254		889															
				6.0	.08	5.9	.09	5.3	.10	4.7	.09														
150SC2B	15 lbs.	832	3267	1758		1606		1444		1238															
				7.1	.11	7.0	.12	6.6	.12	5.9	.13														
		904	3550	1910		1770		1625		1462		1193													
				8.4	.14	8.4	.15	8.0	.16	7.4	.16	6.8	.16												
150R3B	1/4	972	3817	2054		1924		1790		1647		1468													
				9.7	.17	9.7	.19	9.4	.20	8.9	.20	8.3	.20												
150SC3B	15 lbs.	1040	4084	2198		2076		1952		1822		1677		1469											
				11.3	.21	11.3	.22	11.1	.24	10.5	.24	9.9	.25	9.4	.25										
150R4B	1/3	1149	4512	2428		2318		2207		2093		1971		1835		1648									
				14.1	.28	14.1	.30	14.0	.31	13.6	.32	13.0	.33	12.4	.33	11.8	.33								
150R5B	1/2	1235	4849	2610		2508		2405		2299		2190		2074		1940		1756							
				16.6	.35	16.6	.37	16.5	.39	16.1	.40	15.7	.40	15.0	.41	14.4	.41	13.8	.41						
150SC5B	23 lbs.	1320	5183	2789		2694		2598		2500		2400		2295		2183		2052		1877					
				18.4	.43	18.4	.45	18.4	.47	18.0	.48	17.6	.49	17.1	.50	16.5	.50	16.0	.51	15.7	.51				
150R6B	3/4	1420	5576	3001		2912		2823		2733		2641		2546		2447		2342		2221		1834			
				20	.53	20	.55	20	.58	20	.59	19.8	.61	19.4	.61	19.0	.62	18.6	.62	18.3	.63	17.6	.61		
150SC6B	31 lbs.	1519	5965	3210		3127		3044		2960		2875		2788		2698		2605		2506		2260			
				23	.65	23	.67	23	.70	23	.72	22	.73	22	.75	22	.75	21	.76	21	.76	20	.77		

150 ACRUB-HP / ACSC-HP

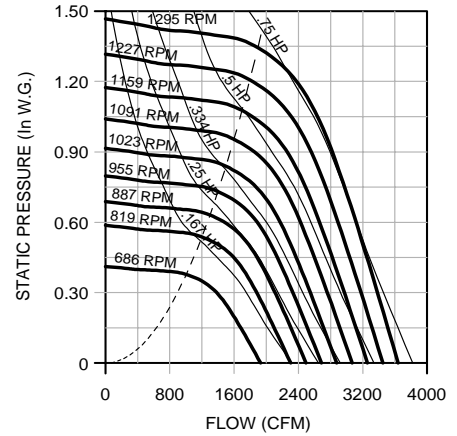
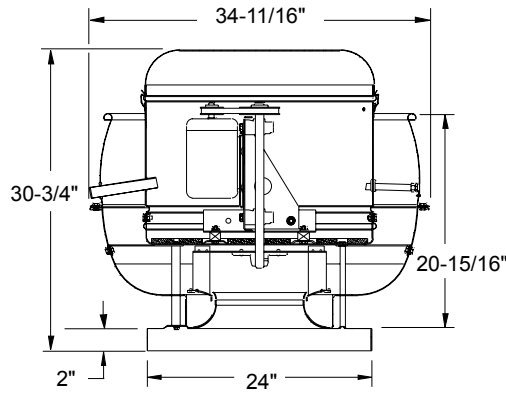
Catalog Number	Mtr. HP/ Drv. Wt.	Fan RPM	Tip Speed	0.250" SP		0.375" SP		0.500" SP		0.750" SP		1.000" SP		1.250" SP		1.500" SP		1.750" SP		2.000" SP		2.250" SP		2.500" SP	
				Sone	BHP	Sone	BHP	Sone	BHP	Sone	BHP	Sone	BHP	Sone	BHP	Sone	BHP	Sone	BHP	Sone	BHP	Sone	BHP	Sone	BHP
150RH2B	1/6	881	3459	672		536		339																	
				4.4	.07	4.1	.07	3.7	.06																
150SCH2B	15 lbs.	1162	4563	1012		932		835		606															
				7.4	.15	7.5	.16	7.6	.16	6.8	.16														
150RH3B	1/4	1249	4904	1108		1039		954		763		491													
				8.5	.19	8.6	.20	8.7	.20	8.2	.20	7.3	.18												
150SCH3B	15 lbs.	1336	5246	1202		1141		1069		899		689													
				9.6	.23	9.6	.24	9.8	.24	9.8	.25	8.7	.24												
150RH4B	1/3	1407	5525	1277		1221		1158		1000		818		587											
				10.6	.26	10.4	.27	10.6	.28	10.9	.29	10.0	.29	9.1	.27										
150SCH4B	19 lbs.	1478	5804	1352		1300		1242		1098		940		743											
				11.4	.30	11.3	.31	11.3	.32	11.6	.34	11.1	.33	10.2	.33										
150RH5B	1/2	1587	6232	1466		1419		1368		1245		1102		940		753									
				12.9	.37	12.8	.38	12.8	.39	12.8	.41	12.9	.42	12.0	.41	11.3	.40								
150SCH5B	23 lbs.	1696	6660	1579		1536		1489		1384		1253		1118		952		775							
				14.4	.45	14.4	.46	14.3	.47	14.3	.49	14.2	.51	13.9	.50	13.2	.50	12.6	.48						
150RH6B	3/4	1824	7162	1711		1671		1629		1538		1427		1301		1174		1014		852					
				16.2	.56	16.2	.57	16.2	.58	16.2	.60	16.2	.62	16.1	.63	15.6	.63	15.1	.62	14.7	.60				
150SCH6B	31 lbs.	1952	7665	1842		1805		1766		1685		1591		1477		1361		1239		1087		938			
				18.5	.68	18.5	.69	18.5	.71	18.4	.73	18.3	.75	18.3	.77	18.3	.77	17.8	.77	17.4	.76	17.1	.74		

Performance certified is for Installation Type A: free inlet, free outlet. Power rating (BHP) does not include transmission losses. Performance ratings do not include the effects of appurtenances (accessories) in the airstream. The sound ratings shown are loudness values in fan sones at 5 ft. (1.5m) in a hemispherical free field calculated per AMCA Standard 301. Values shown are for Installation Type A: free inlet fan sone levels.

165 ACRUB / ACSC

Wheel Diameter - 16.5 inches
Tip Speed (FPM) - 4.3 x RPM
Maximum RPM - 1295
Maximum BHP - .35 x (RPM/1000)³
Maximum Motor Frame - 56
Approx. Ship Wt. (Less Motor) - 83 lbs.
Roof Curb - RCG, RCA - 22
Roof Opening - 19-1/2 inches

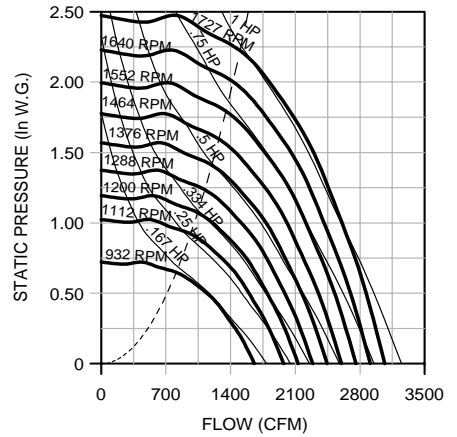
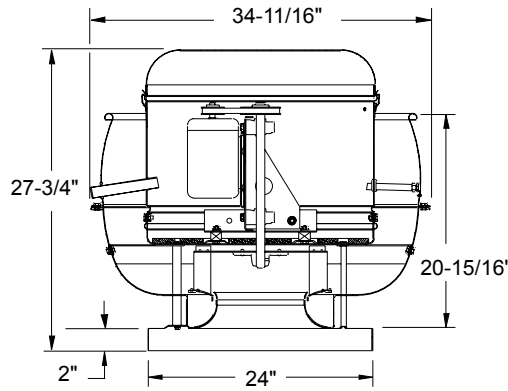
Material Gauges
Top Cap Lid - .050
Top Cap Cylinder - .040
Baffle - .063
Base - .063



165 ACRUB-HP / ACSC-HP

Wheel Diameter - 16.5 inches
Tip Speed (FPM) - 4.3 x RPM
Maximum RPM - 1728
Maximum BHP - .20 x (RPM/1000)³
Maximum Motor Frame - 143T
Approx. Ship Wt. (Less Motor) - 83 lbs.
Roof Curb - RCG, RCA - 22
Roof Opening - 19-1/2 inches

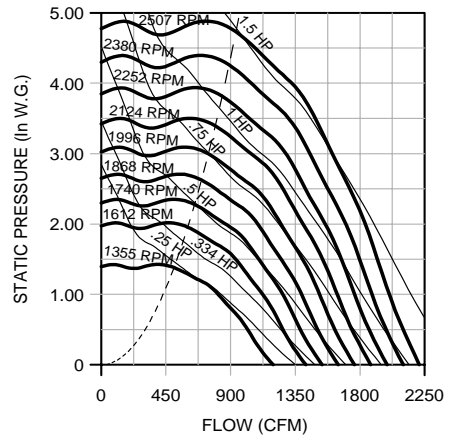
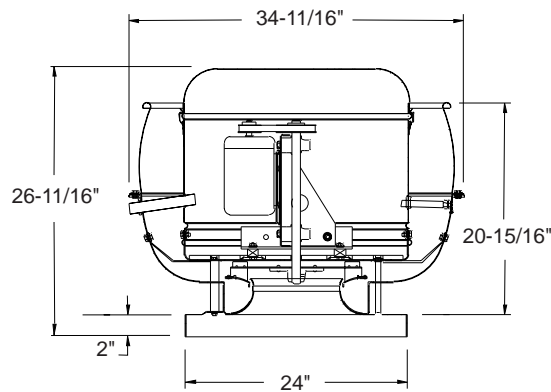
Material Gauges
Top Cap Lid - .050
Top Cap Cylinder - .040
Baffle - .063
Base - .063



165 ACRUB-XP / ACSC-XP

Wheel Diameter - 16.5 inches
Tip Speed (FPM) - 4.3 x RPM
Maximum RPM - 2508
Maximum BHP - .19 x (RPM/1000)³
Maximum Motor Frame - 143T
Approx. Ship Wt. (Less Motor) - 83 lbs.
Roof Curb - RCG, RCA - 22
Roof Opening - 19-1/2 inches

Material Gauges
Top Cap Lid - .050
Top Cap Cylinder - .040
Baffle - .063
Base - .063



Performance certified is for Installation Type A: free inlet, free outlet. Power rating (BHP) does not include transmission losses. Performance ratings do not include the effects of appurtenances (accessories) in the airstream. The sound ratings shown are loudness values in fan sones at 5 ft. (1.5m) in a hemispherical free field calculated per AMCA Standard 301. Values shown are for Installation Type A: free inlet fan sone levels.

165 ACRUB / ACSC

Catalog Number	Mtr. HP/ Drv. Wt.	Fan RPM	Tip Speed	0.000" SP		0.125" SP		0.250" SP		0.375" SP		0.500" SP		0.625" SP		0.750" SP		0.875" SP		1.000" SP		1.250" SP		1.500" SP		
				Sone	BHP	Sone	BHP	Sone	BHP	Sone	BHP	Sone	BHP	Sone	BHP	Sone	BHP	Sone	BHP	Sone	BHP	Sone	BHP	Sone	BHP	Sone
165R2B	1/6	686	2963	1929		1725		1500		1024																
				6.3	.10	6.2	.11	5.5	.11	4.8	.10															
165SC2B	15 lbs.	771	3330	2168		1988		1797		1564																
				7.6	.14	7.6	.15	7.1	.16	6.4	.16															
165R3B	1/4	829	3581	2331		2164		1990		1796		1492														
				8.7	.17	8.7	.19	8.3	.20	7.7	.20	7.1	.20													
165SC3B	15 lbs.	887	3831	2494		2338		2177		2004		1792		1337												
				10.0	.21	10.0	.23	9.6	.24	9.1	.24	8.5	.25	7.9	.22											
165R4B	1/3	933	4030	2624		2475		2323		2163		1981		1706												
				11.1	.24	11.1	.26	10.8	.28	10.3	.28	9.7	.29	9.1	.29											
165SC4B	19 lbs.	980	4233	2756		2615		2471		2320		2157		1950		1550										
				12.3	.28	12.3	.30	12.1	.32	11.7	.33	11.0	.33	10.4	.33	9.9	.31									
165R5B	1/2	1052	4544	2958		2827		2694		2556		2411		2249		2033		1608								
				14.3	.35	14.3	.37	14.1	.39	13.7	.40	13.2	.41	12.6	.41	12.1	.38									
165SC5B	23 lbs.	1125	4859	3164		3041		2917		2790		2657		2517		2356		2138		1723						
				16.4	.43	16.4	.45	16.4	.47	16.0	.49	15.5	.49	14.9	.50	14.4	.50	13.9	.51	13.5	.46					
165R6B	3/4	1210	5226	3403		3289		3174		3057		2936		2811		2677		2525		2323						
				19.2	.53	19.2	.56	19.2	.58	18.8	.60	18.5	.61	17.9	.62	17.2	.62	16.6	.63	16.2	.63					
165SC6B	31 lbs.	1295	5594	3642		3535		3428		3319		3208		3094		2975		2848		2705		2251				
				22	.65	22	.68	22	.70	21	.72	21	.74	21	.75	20	.76	19.4	.76	18.9	.77	18.1	.75			

165 ACRUB-HP / ACSC-HP

Catalog Number	Mtr. HP/ Drv. Wt.	Fan RPM	Tip Speed	0.250" SP		0.375" SP		0.500" SP		0.750" SP		1.000" SP		1.250" SP		1.500" SP		1.750" SP		2.000" SP		2.250" SP		2.500" SP		
				Sone	BHP	Sone	BHP	Sone	BHP	Sone	BHP	Sone	BHP	Sone	BHP	Sone	BHP	Sone	BHP	Sone	BHP	Sone	BHP	Sone	BHP	Sone
165RH2B	1/6	932	4025	1450		1314		1141																		
				6.7	.16	6.5	.16	6.2	.16																	
165RH3B	1/4	1072	4630	1736		1626		1507		1165																
				8.7	.23	8.4	.24	8.3	.25	8.0	.24															
165RH4B	1/3	1128	4872	1846		1747		1635		1355																
				9.5	.26	9.3	.28	9.1	.29	8.8	.29															
165SCH4B	19 lbs.	1185	5118	1957		1866		1762		1527		1142														
				10.5	.30	10.2	.32	9.9	.33	9.7	.34	9.8	.32													
165RH5B	1/2	1273	5498	2125		2046		1954		1752		1466														
				12.1	.37	11.8	.39	11.5	.40	11.1	.41	11.2	.41													
165SCH5B	23 lbs.	1361	5879	2291		2221		2140		1956		1742		1421												
				13.5	.45	13.3	.46	13.0	.48	12.4	.50	12.3	.51	12.4	.50											
165RH6B	3/4	1463	6319	2482		2419		2349		2184		2007		1771		1448										
				15.1	.55	14.9	.57	14.7	.59	14.1	.61	13.7	.63	13.7	.63	13.8	.61									
165SCH6B	31 lbs.	1566	6764	2673		2615		2553		2408		2246		2069		1819		1503								
				16.8	.67	16.8	.69	16.5	.71	15.9	.74	15.4	.76	15.0	.77	15.1	.76	15.2	.75							
165RH7B	1	1646	7110	2820		2767		2709		2577		2426		2268		2074		1809		1467						
				18.2	.77	18.2	.79	18.0	.81	17.4	.85	16.9	.88	16.4	.90	16.2	.90	16.1	.88	16.2	.85					
165SCH7B	36 lbs.	1727	7460	2969		2918		2865		2745		2604		2457		2297		2082		1817						
				19.6	.89	19.6	.91	19.5	.93	19.0	.97	18.5	1.01	18.1	1.03	17.8	1.04	17.6	1.03	17.4	1.02					

165 ACRUB-XP / ACSC-XP

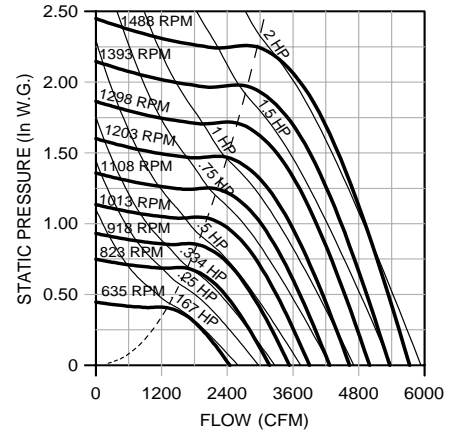
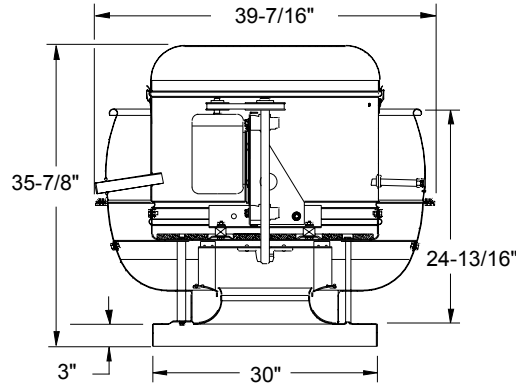
Catalog Number	Mtr. HP/ Drv. Wt.	Fan RPM	Tip Speed	1.000" SP		1.250" SP		1.500" SP		1.750" SP		2.000" SP		2.250" SP		2.500" SP		3.000" SP		3.500" SP		4.000" SP		4.500" SP		
				Sone	BHP	Sone	BHP	Sone	BHP	Sone	BHP	Sone	BHP	Sone	BHP	Sone	BHP	Sone	BHP	Sone	BHP	Sone	BHP	Sone	BHP	Sone
165RX3B	1/4	1355	5853	814		637																				
				9.4	.24	9.1	.25																			
165RX4B	1/3	1498	6470	988		889		728																		
				11.7	.32	11.3	.33	10.9	.33																	
165RX5B	1/2	1609	6950	1121		1025		931		766		519														
				13.3	.38	12.9	.40	12.5	.41	12.3	.41	12.0	.37													
165SCX5B	23 lbs.	1720	7429	1243		1160		1072		981		818		614												
				15.0	.46	14.5	.48	14.1	.49	13.9	.50	13.7	.50	13.5	.47											
165RX6B	3/4	1850	7991	1376		1310		1229		1148		1065		926		753										
				16.9	.56	16.5	.58	16.1	.59	15.7	.61	15.5	.62	15.3	.63	15.2	.61									
165SCX6B	31 lbs.	1979	8548	1503		1448		1382		1304		1229		1152		1040		681								
				19.1	.67	18.6	.69	18.1	.71	17.8	.73	17.4	.74	17.2	.76	17.1	.77	16.9	.71							
165RX7B	1	2081	8989	1601		1551		1495		1427		1352		1281		1207		947								
				21	.76	20	.79	20	.82	19.6	.84	19.1	.85	18.7	.87	18.6	.88	18.5	.89							
165SCX7B	36 lbs.	2183	9129	1698		1651		1602		1544		1476		1405		1338		1170		876						
				23	.86	22	.90	22	.93	21	.95	21	.97	21	.99	20	1.00	20	1.04	19.9	.99					
165RX8B	1-1/2	2345	10129	1851		1807		1764		1717		1663		1601		1534		1408		1238		964				
				26	1.05	25	1.09	25	1.12	25	1.15	24	1.18	24	1.20	23	1.22	23	1.25	22	1.29	22	1.24			
165SCX8B	38 lbs.	2507	10829	2003		196																				

180 ACRUB / ACSC

Wheel Diameter - 18 inches
Tip Speed (FPM) - 4.7 x RPM
Maximum RPM - 1546
Maximum BHP - .57 x (RPM/1000)³
Maximum Motor Frame - 145T
Approx. Ship Wt. (Less Motor) - 100 lbs.
Roof Curb - RCG, RCA - 28
Roof Opening - 25-1/2 inches

Material Gauges

Top Cap Lid - .050
Top Cap Cylinder - .040
Baffle - .080
Base - .080

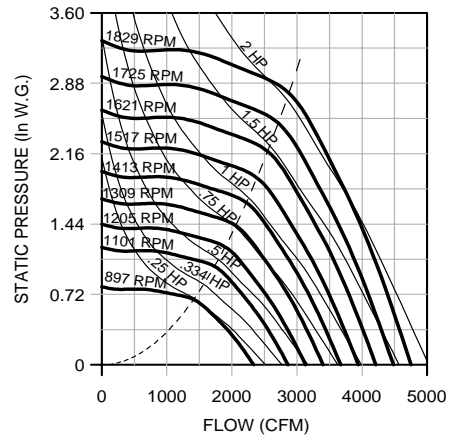
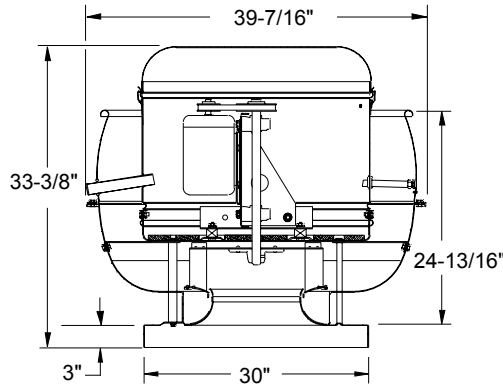


180 ACRUB-HP / ACSC-HP

Wheel Diameter - 18 inches
Tip Speed (FPM) - 4.7 x RPM
Maximum RPM - 1829
Maximum BHP - .31 x (RPM/1000)³
Maximum Motor Frame - 145T
Approx. Ship Wt. (Less Motor) - 100 lbs.
Roof Curb - RCG, RCA - 28
Roof Opening - 25-1/2 inches

Material Gauges

Top Cap Lid - .050
Top Cap Cylinder - .040
Baffle - .080
Base - .080

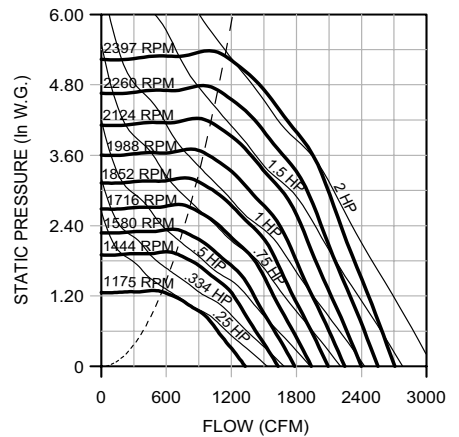
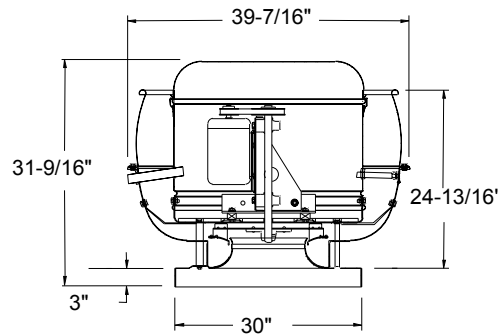


180 ACRUB-XP / ACSC-XP

Wheel Diameter - 18 inches
Tip Speed (FPM) - 4.7 x RPM
Maximum RPM - 2396
Maximum BHP - .15 x (RPM/1000)³
Maximum Motor Frame - 145T
Approx. Ship Wt. (Less Motor) - 100 lbs.
Roof Curb - RCG, RCA - 28
Roof Opening - 25-1/2 inches

Material Gauges

Top Cap Lid - .050
Top Cap Cylinder - .040
Baffle - .080
Base - .080



Performance certified is for Installation Type A: free inlet, free outlet. Power rating (BHP) does not include transmission losses. Performance ratings do not include the effects of appurtenances (accessories) in the airstream. The sound ratings shown are loudness values in fan sones at 5 ft. (1.5m) in a hemispherical free field calculated per AMCA Standard 301. Values shown are for Installation Type A: free inlet fan sone levels.

180 ACRUB / ACSC

Catalog Number	Mtr. HP/ Drv. Wt.	Fan RPM	Tip Speed	0.000" SP		0.125" SP		0.250" SP		0.375" SP		0.500" SP		0.625" SP		0.750" SP		0.875" SP		1.000" SP		1.250" SP		1.500" SP			
				Sone	BHP	Sone	BHP	Sone	BHP	Sone	BHP	Sone	BHP	Sone	BHP	Sone	BHP	Sone	BHP	Sone	BHP	Sone	BHP	Sone	BHP	Sone	BHP
180R2B 180SC2B	1/6 15 lbs.	635	2992	2446		2214		1945		1541																	
180R3B 180SC3B	1/4 15 lbs.	730	3440	2812		2612		2395		2138		1751															
180R4B 180SC4B	1/3 19 lbs.	807	3802	3109		2928		2738		2526		2272		1872													
180R5B 180SC5B	1/2 23 lbs.	927	4368	3571		3414		3253		3082		2893		2677		2401											
180R6B 180SC6B	3/4 31 lbs.	1066	5023	4106		3970		3832		3690		3539		3376		3199		2997		2741							
180R7B 180SC7B	1 36 lbs.	1176	5541	4530		4407		4283		4155		4023		3885		3738		3579		3405		2948					
180R8B 180SC8B	1-1/2 38 lbs.	1264 1351	5956 6366	4869		4755		4639		4522		4402		4277		4146		4007		3860		3523		3029		1.25	
180R9B 180SC9B	2 50 lbs.	1419 1488	6686 7012	5466		5364		5262		5158		5053		4946		4835		4721		4601		4345		4054		1.81	
				24		24		24		24		24		23		23		22		22		21		20		20	
				26		26		26		26		26		25		25		25		24		24		23		22	

180 ACRUB-HP / ACSC-HP

Catalog Number	Mtr. HP/ Drv. Wt.	Fan RPM	Tip Speed	0.250" SP		0.375" SP		0.500" SP		0.750" SP		1.000" SP		1.250" SP		1.500" SP		1.750" SP		2.000" SP		2.250" SP		2.500" SP			
				Sone	BHP	Sone	BHP	Sone	BHP	Sone	BHP	Sone	BHP	Sone	BHP	Sone	BHP	Sone	BHP	Sone	BHP	Sone	BHP	Sone	BHP	Sone	BHP
180RH3B 180SCH3B	1/4 15 lbs.	897	4227	2068		1910		1724																			
180RH4B 180SCH4B	1/3 19 lbs.	992	4674	2344		2212		2060		1704																	
180RH5B 180SCH5B	1/2 23 lbs.	1139	5367	2759		2652		2534		2258		1939															
180RH6B 180SCH6B	3/4 31 lbs.	1225 1311	5772 6177	2998		2900		2796		2557		2278															
180RH7B 180SCH7B	1 36 lbs.	1446	6814	3234		3144		3050		2839		2592		2323													
180RH8B 180SCH8B	1-1/2 38 lbs.	1553 1660	7318 7822	3602		3521		3438		3260		3057		2827		2583											
180RH9B 180SCH9B	2 50 lbs.	1744 1829	8218 8618	3891		3817		3741		3580		3403		3204		2984		2756									
				22		22		22		22		21		20		19.5		18.7		18.7		21		20		20	
				25		25		25		24		24		23		22		22		21		20		20		20	
				27		27		27		27		26		25		25		24		23		22		22		22	
				29		29		29		29		28		28		27		26		26		25		25		24	

180 ACRUB-XP / ACSC-XP

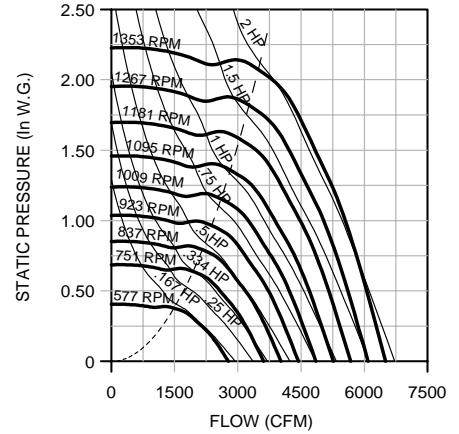
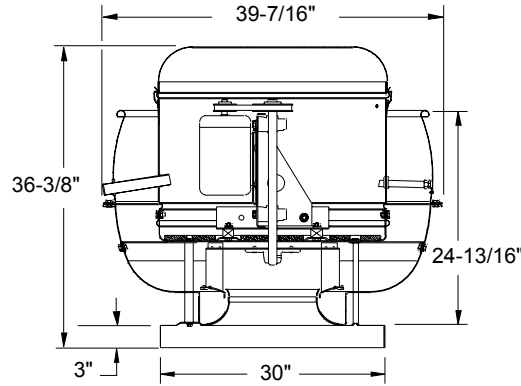
Catalog Number	Mtr. HP/ Drv. Wt.	Fan RPM	Tip Speed	1.000" SP		1.250" SP		1.500" SP		1.750" SP		2.000" SP		2.250" SP		2.500" SP		3.000" SP		3.500" SP		4.000" SP		4.500" SP			
				Sone	BHP	Sone	BHP	Sone	BHP	Sone	BHP	Sone	BHP	Sone	BHP	Sone	BHP	Sone	BHP	Sone	BHP	Sone	BHP	Sone	BHP	Sone	BHP
180RX3B 180SCX3B	1/4 15 lbs.	1175	5537	848		595																					
180RX4B 180SCX4B	1/3 19 lbs.	1300	6126	1089		918		698																			
180RX5B 180SCX5B	1/2 23 lbs.	1492	7030	1354		1274		1156		988		774															
180RX6B 180SCX6B	3/4 31 lbs.	1717	8091	1650		1578		1511		1436		1322		1174		1022											
180RX7B 180SCX7B	1 36 lbs.	1805 1894	8505 8925	1764		1694		1629		1564		1486		1368		1227											
180RX8B 180SCX8B	1-1/2 38 lbs.	2034 2175	9585 10249	1933		1930		1871		1814		1756		1688		1466		1216									
180RX9B 180SCX9B	2 50 lbs.	2286 2397	10772 11295	2372		2316		2258		2201		2146		2094		2044		1938		1780		1558		1320			
				28		28		28		28		28		28		28		28		28		28		29		29	
				31		30		30		30		30		30		30		30		30		30		31		31	

Performance certified is for Installation Type A: free inlet, free outlet. Power rating (BHP) does not include transmission losses. Performance ratings do not include the effects of appurtenances (accessories) in the airstream. The sound ratings shown are loudness values in fan sones at 5 ft. (1.5m) in a hemispherical free field calculated per AMCA Standard 301. Values shown are for Installation Type A: free inlet fan sone levels.

195 ACRUB / ACSC

Wheel Diameter - 19.5 inches
Tip Speed (FPM) - 5.1 x RPM
Maximum RPM - 1353
Maximum BHP - .85 x (RPM/1000)³
Maximum Motor Frame - 145T
Approx. Ship Wt. (Less Motor) - 110 lbs.
Roof Curb - RCG, RCA - 28
Roof Opening - 25-1/2 inches

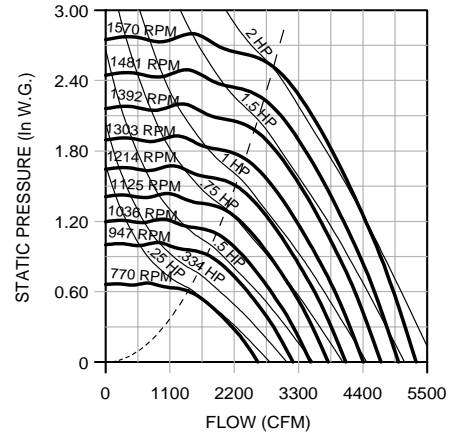
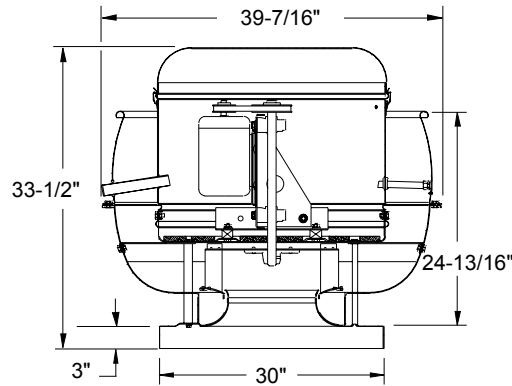
Material Gauges
Top Cap Lid - .050
Top Cap Cylinder - .040
Baffle - .080
Base - .080



195 ACRUB-HP / ACSC-HP

Wheel Diameter - 19.5 inches
Tip Speed (FPM) - 5.1 x RPM
Maximum RPM - 1570
Maximum BHP - .54 x (RPM/1000)³
Maximum Motor Frame - 145T
Approx. Ship Wt. (Less Motor) - 110 lbs.
Roof Curb - RCG, RCA - 28
Roof Opening - 25-1/2 inches

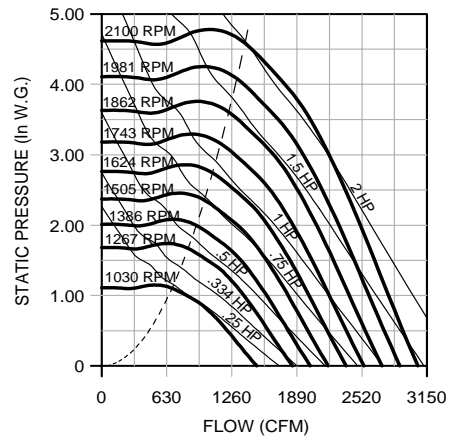
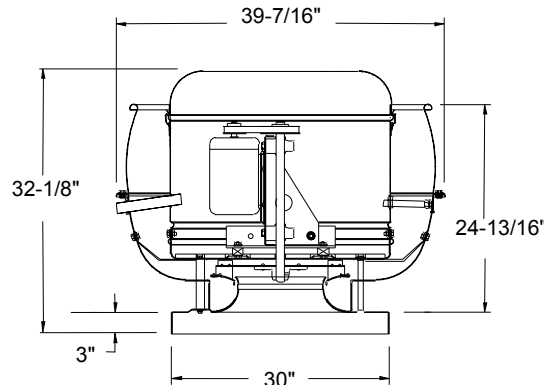
Material Gauges
Top Cap Lid - .050
Top Cap Cylinder - .040
Baffle - .080
Base - .080



195 ACRUB-XP / ACSC-XP

Wheel Diameter - 19.5 inches
Tip Speed (FPM) - 5.1 x RPM
Maximum RPM - 2100
Maximum BHP - .23 x (RPM/1000)³
Maximum Motor Frame - 145T
Approx. Ship Wt. (Less Motor) - 110 lbs.
Roof Curb - RCG, RCA - 28
Roof Opening - 25-1/2 inches

Material Gauges
Top Cap Lid - .050
Top Cap Cylinder - .040
Baffle - .080
Base - .080



Performance certified is for Installation Type A: free inlet, free outlet. Power rating (BHP) does not include transmission losses. Performance ratings do not include the effects of appurtenances (accessories) in the airstream. The sound ratings shown are loudness values in fan sones at 5 ft. (1.5m) in a hemispherical free field calculated per AMCA Standard 301. Values shown are for Installation Type A: free inlet fan sone levels.

195 ACRUB / ACSC

Catalog Number	Mtr. HP/ Drv. Wt.	Fan RPM	Tip Speed	0.000" SP		0.125" SP		0.250" SP		0.375" SP		0.500" SP		0.625" SP		0.750" SP		0.875" SP		1.000" SP		1.250" SP		1.500" SP	
				Sone	BHP	Sone	BHP	Sone	BHP	Sone	BHP	Sone	BHP	Sone	BHP	Sone	BHP	Sone	BHP	Sone	BHP	Sone	BHP	Sone	BHP
195R2B 195SC2B	1/6 15 lbs.	577	2945	2774		2506		2147		1510															
195R3B 195SC3B	1/4 15 lbs.	664	3389	3192		2963		2702		2329															
195R4B 195SC4B	1/3 19 lbs.	734	3747	3528		3323		3100		2816		2454													
195R5B 195SC5B	1/2 23 lbs.	842	4298	4047		3869		3683		3476		3214		2899		2513									
195R6B 195SC6B	3/4 31 lbs.	969	4946	4658		4504		4345		4178		3995		3776		3505		3231		2865					
195R7B 195SC7B	1 36 lbs.	1069	5457	5139		4999		4857		4710		4554		4384		4184		3943		3695		3009			
195R8B 195SC8B	1-1/2 38 lbs.	1149 1228	5865 6269	5523		5393		5262		5127		4986		4837		4674		4484		4259		3792			
195R9B 195SC9B	2 50 lbs.	1290 1353	6585 6907	6201		6085		5969		5851		5729		5604		5472		5332		5178		4799		4386	
				25 1.57		25 1.60		25 1.64		25 1.67		24 1.70		24 1.73		23 1.75		22 1.78		22 1.79		21 1.81		21 1.80	
				27 1.81		27 1.85		27 1.88		27 1.92		26 1.95		26 1.98		25 2.01		24 2.03		24 2.05		23 2.09		22 2.09	

195 ACRUB-HP / ACSC-HP

Catalog Number	Mtr. HP/ Drv. Wt.	Fan RPM	Tip Speed	0.250" SP		0.375" SP		0.500" SP		0.750" SP		1.000" SP		1.250" SP		1.500" SP		1.750" SP		2.000" SP		2.250" SP		2.500" SP	
				Sone	BHP	Sone	BHP	Sone	BHP	Sone	BHP	Sone	BHP	Sone	BHP	Sone	BHP	Sone	BHP	Sone	BHP	Sone	BHP	Sone	BHP
195RH3B 195SCH3B	1/4 15 lbs.	770	3930	2251		2019		1747																	
195RH4B 195SCH4B	1/3 19 lbs.	851	4344	2571		2374		2155																	
195RH5B 195SCH5B	1/2 23 lbs.	977	4987	3044		2893		2718		2318															
195RH6B 195SCH6B	3/4 31 lbs.	1051 1124	5365 5738	3315		3182		3029		2680		2254													
195RH7B 195SCH7B	1 36 lbs.	1240	6330	3994		3888		3775		3513		3217		2883		2453									
195RH8B 195SCH8B	1-1/2 38 lbs.	1332 1424	6799 7269	4319		4223		4121		3892		3629		3342		3016		2594							
195RH9B 195SCH9B	2 50 lbs.	1497 1570	7642 8015	4899		4814		4727		4541		4327		4091		3840		3565		3250		2832			
				25 1.54		25 1.58		25 1.61		24 1.68		23 1.72		22 1.75		21 1.75		19.7 1.81		18.8 1.81		17.9 1.76			
				26 1.77		26 1.81		26 1.85		26 1.91		25 1.97		24 2.00		23 2.03		22 2.07		21 2.09		20 2.09		19.2 2.02	

195 ACRUB-XP / ACSC-XP

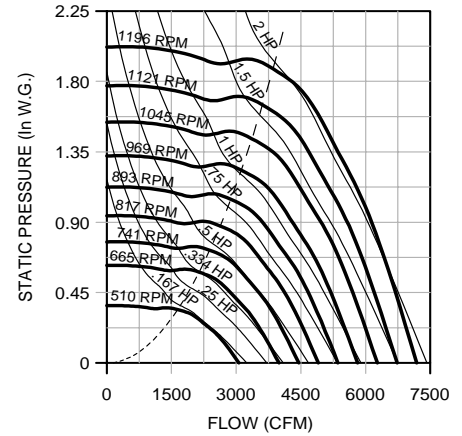
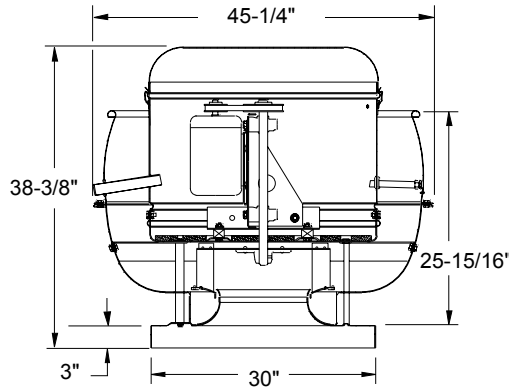
Catalog Number	Mtr. HP/ Drv. Wt.	Fan RPM	Tip Speed	1.000" SP		1.250" SP		1.500" SP		1.750" SP		2.000" SP		2.250" SP		2.500" SP		3.000" SP		3.500" SP		4.000" SP		4.500" SP	
				Sone	BHP	Sone	BHP	Sone	BHP	Sone	BHP	Sone	BHP	Sone	BHP	Sone	BHP	Sone	BHP	Sone	BHP	Sone	BHP	Sone	BHP
195RX3B 195SCX3B	1/4 15 lbs.	1030	5258	823																					
195RX4B 195SCX4B	1/3 19 lbs.	1139	5814	1117		879																			
195RX5B 195SCX5B	1/2 23 lbs.	1308	6677	1455		1324		1153		901															
195RX6B 195SCX6B	3/4 31 lbs.	1505	7683	1806		1706		1596		1474		1315		1102											
195RX7B 195SCX7B	1 36 lbs.	1583 1660	8081 8474	1939		1846		1747		1639		1517		1356		1150									
195RX8B 195SCX8B	1-1/2 38 lbs.	1783 1906	9102 9730	2270		2190		2108		2022		1931		1834		1726		1423							
195RX9B 195SCX9B	2 50 lbs.	2003 2100	10225 10720	2624		2553		2482		2410		2336		2259		2177		2001		1775		1456			
				25 1.45		24 1.51		23 1.56		23 1.60		23 1.64		22 1.68		22 1.71		22 1.785		21 1.82		19.8 1.77			
				26 1.65		26 1.71		25 1.76		25 1.81		25 1.86		24 1.90		24 1.94		24 2.01		23 2.07		22 2.10		21 2.01	

Performance certified is for Installation Type A: free inlet, free outlet. Power rating (BHP) does not include transmission losses. Performance ratings do not include the effects of appurtenances (accessories) in the airstream. The sound ratings shown are loudness values in fan sones at 5 ft. (1.5m) in a hemispherical free field calculated per AMCA Standard 301. Values shown are for Installation Type A: free inlet fan sone levels.

210 ACRUB / ACSC

Wheel Diameter - 21 inches
Tip Speed (FPM) - 5.5 x RPM
Maximum RPM - 1197
Maximum BHP - 1.2 x (RPM/1000)³
Maximum Motor Frame - 182T
Approx. Ship Wt. (Less Motor) - 220 lbs.
Roof Curb - RCG, RCA - 28
Roof Opening - 25-1/2 inches

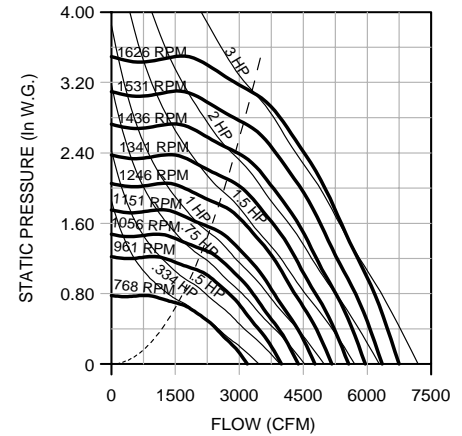
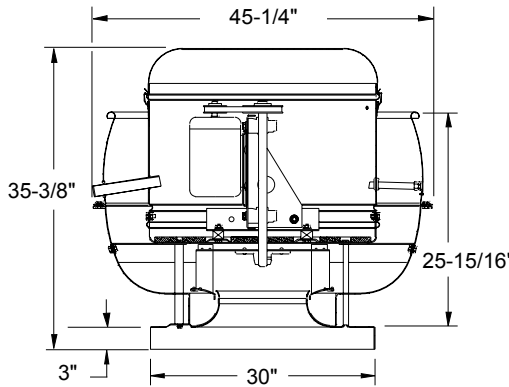
Material Gauges
Top Cap Lid - .063
Top Cap Cylinder - .040
Baffle - .080
Base - .080



210 ACRUB-HP / ACSC-HP

Wheel Diameter - 21 inches
Tip Speed (FPM) - 5.5 x RPM
Maximum RPM - 1626
Maximum BHP - .74 x (RPM/1000)³
Maximum Motor Frame - 182T
Approx. Ship Wt. (Less Motor) - 220 lbs.
Roof Curb - RCG, RCA - 28
Roof Opening - 25-1/2 inches

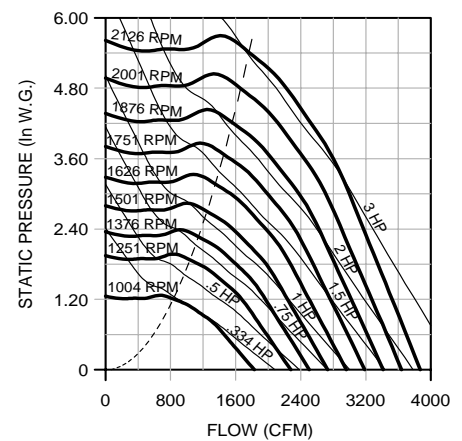
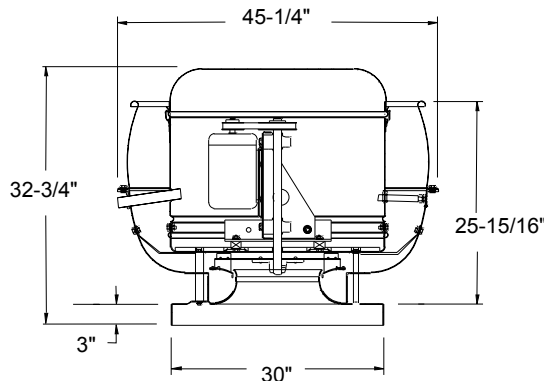
Material Gauges
Top Cap Lid - .063
Top Cap Cylinder - .040
Baffle - .080
Base - .080



210 ACRUB-XP / ACSC-XP

Wheel Diameter - 21 inches
Tip Speed (FPM) - 5.5 x RPM
Maximum RPM - 2126
Maximum BHP - .33 x (RPM/1000)³
Maximum Motor Frame - 182T
Approx. Ship Wt. (Less Motor) - 220 lbs.
Roof Curb - RCG, RCA - 28
Roof Opening - 25-1/2 inches

Material Gauges
Top Cap Lid - .063
Top Cap Cylinder - .040
Baffle - .080
Base - .080



Performance certified is for Installation Type A: free inlet, free outlet. Power rating (BHP) does not include transmission losses. Performance ratings do not include the effects of appurtenances (accessories) in the airstream. The sound ratings shown are loudness values in fan sones at 5 ft. (1.5m) in a hemispherical free field calculated per AMCA Standard 301. Values shown are for Installation Type A: free inlet fan sone levels.

210 ACRUB / ACSC

Catalog Number	Mtr. HP/ Drv. Wt.	Fan RPM	Tip Speed	0.000" SP		0.125" SP		0.250" SP		0.375" SP		0.500" SP		0.625" SP		0.750" SP		0.875" SP		1.000" SP		1.250" SP		1.500" SP	
				Sone	BHP	Sone	BHP	Sone	BHP	Sone	BHP	Sone	BHP	Sone	BHP	Sone	BHP	Sone	BHP	Sone	BHP	Sone	BHP	Sone	BHP
210R2B 210SC2B	1/6 15 lbs.	510	2803	3062		2734		2263																	
				5.6	.14	5.2	.16	4.6	.16																
210R3B 210SC3B	1/4 15 lbs.	586	3221	3518		3238		2903		2424															
				7.2	.21	7.0	.23	6.3	.24	5.9	.24														
210R4B 210SC4B	1/3 19 lbs.	648	3562	3891		3639		3360		2977		2503													
				8.5	.29	8.5	.31	7.7	.33	7.2	.33	6.8	.32												
210R5B 210SC5B	1/2 23 lbs.	744	4090	4467		4249		4019		3754		3400		3008											
				10.8	.44	10.8	.46	10.3	.48	9.8	.50	9.3	.50	8.8	.50										
210R6B 210SC6B	3/4 31 lbs.	857	4711	5145		4957		4763		4556		4320		4021		3686		3309							
				14.3	.67	14.3	.69	14.0	.72	13.4	.74	12.8	.76	12.4	.77	11.9	.77	11.5	.75						
210R7B 210SC7B	1 36 lbs.	945	5195	5674		5503		5329		5148		4952		4731		4458		4153		3844					
				17.2	.89	17.2	.92	17.2	.95	16.6	.98	16.0	1.00	15.4	1.02	15.0	1.03	14.6	1.03	14.2	1.02				
210R8B 210SC8B	1-1/2 38 lbs.	1015 1085	5580 5965	6094		5935		5775		5608		5434		5244		5028		4766		4482		3839			
				19.8	1.11	19.8	1.14	19.8	1.17	19.3	1.20	18.7	1.23	18.1	1.25	17.6	1.27	17.2	1.28	16.8	1.28	16.1	1.24		
				6514		6366		6216		6063		5903		5735		5551		5342		5095		4566		3772	
				23	1.35	23	1.39	23	1.42	22	1.43	22	1.49	21	1.51	20	1.53	19.7	1.55	19.3	1.56	18.6	1.55	17.9	1.48
210R9B 210SC9B	2 50 lbs.	1141 1196	6272 6575	6851		6710		6567		6422		6273		6117		5951		5769		5561		5065		4543	
				24	1.57	24	1.61	24	1.65	24	1.68	23	1.72	23	1.75	22	1.77	21	1.79	21	1.81	20	1.82	19.6	1.79
				7181		7046		6911		6773		6632		6486		6333		6169		5989		5549		5069	
				26	1.81	26	1.85	26	1.89	26	1.93	25	1.96	24	1.99	24	2.02	23	2.05	23	2.07	22	2.09	21	2.08

210 ACRUB-HP / ACSC-HP

Catalog Number	Mtr. HP/ Drv. Wt.	Fan RPM	Tip Speed	0.250" SP		0.375" SP		0.500" SP		0.750" SP		1.000" SP		1.250" SP		1.500" SP		1.750" SP		2.000" SP		2.250" SP		2.500" SP	
				Sone	BHP	Sone	BHP	Sone	BHP	Sone	BHP	Sone	BHP	Sone	BHP	Sone	BHP	Sone	BHP	Sone	BHP	Sone	BHP	Sone	BHP
210RH4B 210SCH4B	1/3 19 lbs.	768	4222	2769		2511		2235																	
				8.4	.31	8.3	.32	7.9	.33																
210RH5B 210SCH5B	1/2 23 lbs.	882	4849	3323		3093		2875		2341															
				10.7	.45	10.6	.47	10.6	.49	9.5	.50														
210RH6B 210SCH6B	3/4 31 lbs.	1015	5580	3932		3759		3554		3176		2679		1793											
				13.7	.67	13.6	.70	13.6	.72	13.2	.75	12.2	.77	11.2	.69										
210RH7B 210SCH7B	1 36 lbs.	1067 1120	5866 6157	4164		4008		3819		3452		3037		2485											
				14.9	.77	14.8	.81	14.8	.83	14.6	.87	13.8	.89	12.7	.87										
				4398		4257		4085		3724		3371		2891		2091									
				16.2	.89	16.1	.92	16.1	.95	16.0	.99	15.3	1.02	14.2	1.03	13.3	.95								
210RH8B 210SCH8B	1-1/2 38 lbs.	1286	7070	5122		5007		4881		4572		4264		3965		3579		3133		2301					
				19.8	1.31	19.7	1.36	19.7	1.40	19.6	1.46	19.5	1.50	18.9	1.54	18.1	1.57	17.2	1.55	16.4	1.41				
210RH9B 210SCH9B	2 50 lbs.	1352 1417	7433 7790	5406		5300		5184		4905		4600		4323		4009		3609		3164		2260			
				21	1.52	21	1.56	21	1.61	21	1.68	21	1.73	21	1.77	20	1.80	19.3	1.82	18.4	1.78	17.7	1.59		
				5685		5585		5478		5227		4932		4660		4390		4054		3659		3195		2263	
				23	1.74	23	1.79	23	1.83	23	1.92	23	1.98	23	2.02	22	2.06	21	2.09	20	2.09	19.7	2.03	19.0	1.80
210RH10B 210SCH10B	3 74 lbs.	1521 1626	8362 8939	6131		6038		5942		5725		5462		5191		4944		4688		4374		4008		3618	
				26	2.13	26	2.19	26	2.24	26	2.33	26	2.41	25	2.46	25	2.51	25	2.55	24	2.58	23	2.59	22	2.54
				6578		6493		6404		6213		5986		5728		5481		5253		5011		4722		4384	
				29	2.59	29	2.65	29	2.70	29	2.81	28	2.90	28	2.97	28	3.02	28	3.07	27	3.11	27	3.15	26	3.16

210 ACRUB-XP / ACSC-XP

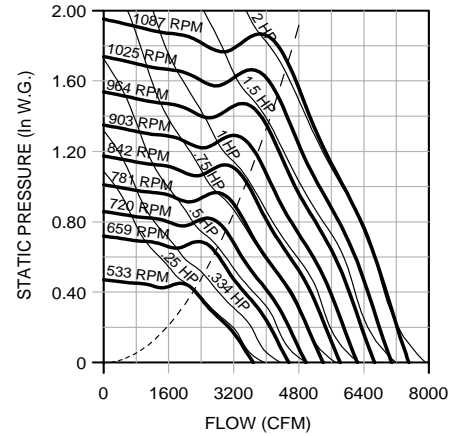
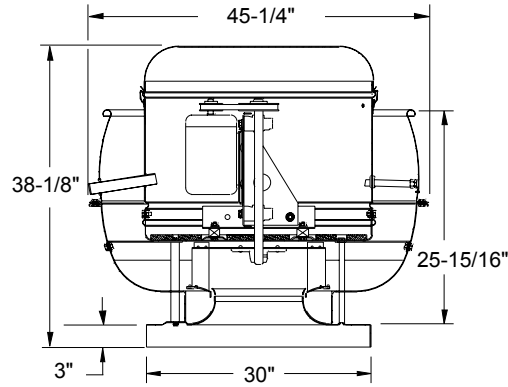
Catalog Number	Mtr. HP/ Drv. Wt.	Fan RPM	Tip Speed	1.000" SP		1.250" SP		1.500" SP		1.750" SP		2.000" SP		2.250" SP		2.500" SP		3.000" SP		3.500" SP		4.000" SP		4.500" SP	
				Sone	BHP	Sone	BHP	Sone	BHP	Sone	BHP	Sone	BHP	Sone	BHP	Sone	BHP	Sone	BHP	Sone	BHP	Sone	BHP	Sone	BHP
210RX4B 210SCX4B	1/3 19 lbs.	1004	5519	1127																					
				9.0	.33																				
210RX5B 210SCX5B	1/2 23 lbs.	1153	6338	1558		1357		1102																	
				11.3	.48	11.2	.50	12.7	.50																
210RX6B 210SCX6B	3/4 31 lbs.	1327	7295	1950		1832		1684		1487		1253													
				14.6	.69	14.5	.73	14.4	.76	14.6	.77	18.1	.76												
210RX7B 210SCX7B	1 36 lbs.	1464	8048	2243		2138		2030		1905		1734		1552		1301									
				17.4	.90	17.3	.93	17.2	.97	17.1	1.01	17.0	1.03	18.2	1.03	27	1.01								
210RX8B 210SCX8B	1-1/2 38 lbs.	1572 1681	8642 9241	2469		2370		2273		2172		2055		1900		1732									
				19.3	1.08	19.2	1.13	19.1	1.17	19.0	1.21	18.8	1.24	18.7	1.27	19.6	1.28								
				2694		2600		2508		2417		2323		2215		2078		1759							
				22	1.30	21	1.34	21	1.39	21	1.43	21	1.47	21	1.51	21	1.55	23	1.56						
210RX9B 210SCX9B	2 50 lbs.	1767 1852	9714 10181	2869		2780		2691		2605		2518		2426		2322		2041		1710					
				23	1.48	23	1.53	23	1.58	23	1.63	22	1.67	22	1.72	22	1.76	22	1.82	29	1.80				
				3040		2956		2871		2787		2704		2621		2532		2309		2023		1646			
				25	1.68	25	1.74	24	1.79	24	1.84	24	1.89	24	1.94	24	1.98	24	2.07	25	2.10	40	2.04		
210RX10B 210SCX10B	3 74 lbs.	1989 2126	10935 11688	3313		3235		3156		3077		2999		2922		2845		2679		2459		2192		1872	
				28	2.04	28	2.11	27	2.17	27	2.23	27	2.28	27	2.33	26	2.38	26	2.48	26	2				

225 ACRUB / ACSC

Wheel Diameter - 22.5 inches
Tip Speed (FPM) - 5.9 x RPM
Maximum RPM - 1086
Maximum BHP - 1.6 x (RPM/1000)³
Maximum Motor Frame - 182T
Approx. Ship Wt. (Less Motor) - 242 lbs.
Roof Curb - RCG, RCA - 28
Roof Opening - 25-1/2 inches

Material Gauges

Top Cap Lid - .063
Top Cap Cylinder - .040
Baffle - .080
Base - .080

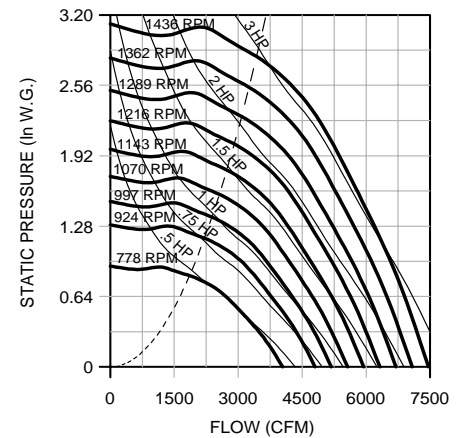
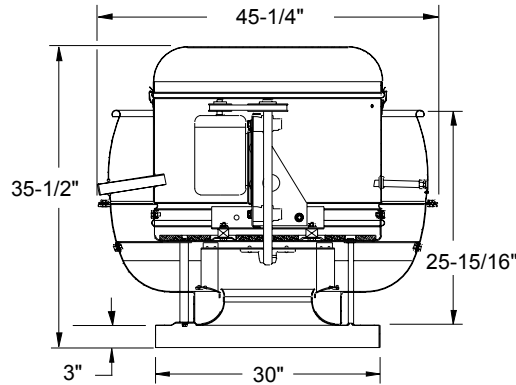


225 ACRUB-HP / ACSC-HP

Wheel Diameter - 22.5 inches
Tip Speed (FPM) - 5.9 x RPM
Maximum RPM - 1435
Maximum BHP - 1.1 x (RPM/1000)³
Maximum Motor Frame - 182T
Approx. Ship Wt. (Less Motor) - 242 lbs.
Roof Curb - RCG, RCA - 28
Roof Opening - 25-1/2 inches

Material Gauges

Top Cap Lid - .063
Top Cap Cylinder - .040
Baffle - .080
Base - .080

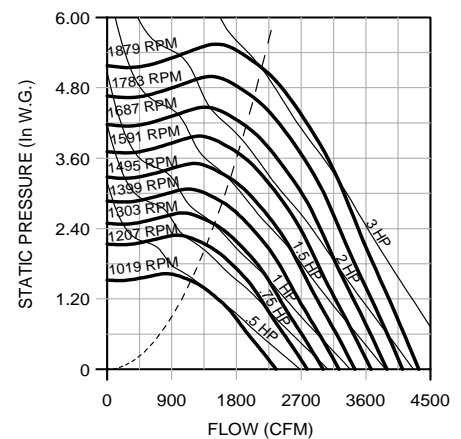
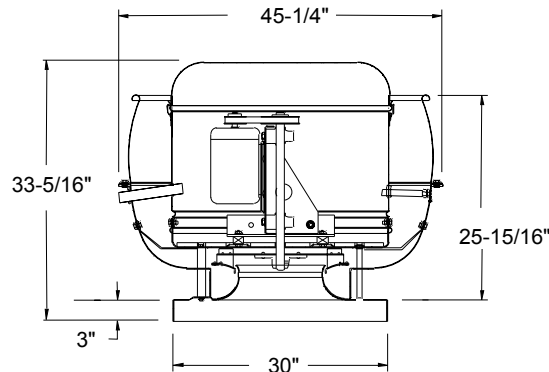


225 ACRUB-XP / ACSC-XP

Wheel Diameter - 22.5 inches
Tip Speed (FPM) - 5.9 x RPM
Maximum RPM - 1879
Maximum BHP - .48 x (RPM/1000)³
Maximum Motor Frame - 182T
Approx. Ship Wt. (Less Motor) - 242 lbs.
Roof Curb - RCG, RCA - 28
Roof Opening - 25-1/2 inches

Material Gauges

Top Cap Lid - .063
Top Cap Cylinder - .040
Baffle - .080
Base - .080



Performance certified is for Installation Type A: free inlet, free outlet. Power rating (BHP) does not include transmission losses. Performance ratings do not include the effects of appurtenances (accessories) in the airstream. The sound ratings shown are loudness values in fan sones at 5 ft. (1.5m) in a hemispherical free field calculated per AMCA Standard 301. Values shown are for Installation Type A: free inlet fan sone levels.

225 ACRUB / ACSC

Catalog Number	Mtr. HP/ Drv. Wt.	Fan RPM	Tip Speed	0.000" SP		0.125" SP		0.250" SP		0.375" SP		0.500" SP		0.625" SP		0.750" SP		0.875" SP		1.000" SP		1.250" SP		1.500" SP			
				Sone	BHP	Sone	BHP	Sone	BHP	Sone	BHP	Sone	BHP	Sone	BHP	Sone	BHP	Sone	BHP	Sone	BHP	Sone	BHP	Sone	BHP	Sone	BHP
225R3B	1/4	533	3139	3684		3333		2854		2357																	
225SC3B	15 lbs.			8.4	.20	8.0	.24	7.4	.24	6.6	.25																
225R4B	1/3	589	3469	4071		3753		3381		2873																	
225SC4B	19 lbs.			10.2	.27	9.8	.32	9.4	.32	8.5	.33																
225R5B	1/2	677	3987	4680		4400		4119		3730		3288		2938													
225SC5B	23 lbs.			13.1	.41	12.7	.49	12.3	.48	11.8	.49	10.9	.49	10.2	.50												
225R6B	3/4	779	4588	5385		5138		4904		4637		4281		3887		3565											
225SC6B	31 lbs.			17.3	.63	16.8	.74	16.4	.75	16.0	.73	15.4	.74	14.7	.75	14.0	.76										
225R7B	1	819	4824	5661		5426		5204		4964		4655		4280		3932		3645									
225SC7B	36 lbs.	859	5059	18.9	.73	18.5	.86	18.1	.87	17.7	.85	17.2	.85	16.5	.87	15.9	.87	15.2	.89								
				5938		5712		5500		5279		5011		4671		4313		4010		3741							
				21	.84	20	.98	19.7	1.01	19.3	.99	18.9	.98	18.4	1.00	17.7	1.00	17.1	1.01	16.4	1.03						
225R8B	1-1/2	923	5436	6380		6169		5971		5771		5548		5271		4942		4612		4330							
225SC8B	38 lbs.	986	5808	24	1.05	23	1.20	23	1.25	22	1.24	22	1.22	21	1.22	21	1.24	20	1.25	19.5	1.26						
				6816		6616		6430		6246		6049		5822		5544		5231		4923		4422					
				27	1.28	26	1.46	26	1.52	25	1.52	25	1.49	25	1.48	24	1.50	23	1.52	23	1.52	22	1.55				
225R9B	2	1036	6102	7161		6970		6793		6618		6437		6236		5997		5716		5414		4878		4427			
225SC9B	50 lbs.	1087	6402	29	1.48	29	1.68	28	1.75	28	1.77	27	1.74	27	1.72	27	1.72	26	1.75	25	1.76	24	1.78	23	1.81		
				7514		7332		7161		6994		6824		6643		6435		6191		5913		5357		4907			
				32	1.71	32	1.92	31	2.02	31	2.04	30	2.03	30	2.00	29	1.98	29	2.00	28	2.02	27	2.04	26	2.07		

225 ACRUB-HP / ACSC-HP

Catalog Number	Mtr. HP/ Drv. Wt.	Fan RPM	Tip Speed	0.250" SP		0.375" SP		0.500" SP		0.750" SP		1.000" SP		1.250" SP		1.500" SP		1.750" SP		2.000" SP		2.250" SP		2.500" SP		
				Sone	BHP	Sone	BHP	Sone	BHP	Sone	BHP	Sone	BHP	Sone	BHP	Sone	BHP	Sone	BHP	Sone	BHP	Sone	BHP	Sone	BHP	Sone
225RH5B	1/2	606	3569	2553		2159		1479																		
225SCH5B	23 lbs.	779	4588	7.3	.23	7.0	.24	6.3	.22																	
				3634		3370		3074		2328																
				14.2	.46	13.9	.49	13.7	.50	13.1	.50															
225RH6B	3/4	897	5283	4315		4110		3875		3356		2659														
225SCH6B	31 lbs.			17.2	.69	17.0	.72	16.7	.74	16.3	.76	15.6	.77													
225RH7B	1	989	5825	4830		4656		4459		4009		3521		2800												
225SCH7B	36 lbs.			19.6	.90	19.6	.94	19.3	.97	18.7	1.02	18.4	1.03	17.5	1.02											
225RH8B	1-1/2	1063	6261	5238		5082		4910		4511		4073		3584		2781										
225SCH8B	38 lbs.	1136	6691	21	1.11	21	1.15	21	1.19	21	1.25	20	1.27	19.7	1.28	18.8	1.22									
				5638		5495		5341		4987		4588		4169		3662		2808								
				23	1.34	23	1.39	23	1.43	23	1.50	22	1.54	22	1.55	21	1.56	20	1.45							
225RH9B	2	1194	7033	5953		5819		5677		5354		4985		4593		4174		3604								
225SCH9B	50 lbs.	1251	7369	26	1.55	26	1.60	26	1.64	25	1.72	24	1.78	23	1.80	23	1.81	22	1.81							
				6262		6135		6002		5705		5364		4996		4615		4180		3542						
				28	1.78	28	1.82	28	1.87	28	1.96	27	2.03	26	2.06	26	2.07	25	2.08	24	2.06					
225RH10B	3	1343	7910	6757		6641		6520		6257		5958		5628		5281		4924		4520		3958				
225SCH10B	74 lbs.	1436	8458	34	2.18	34	2.23	34	2.28	34	2.38	33	2.47	32	2.53	32	2.55	31	2.57	31	2.58	30	2.57			
				7256		7148		7037		6801		6536		6241		5926		5600		5266		4893		4408		
				40	2.65	40	2.71	40	2.76	40	2.86	40	2.96	39	3.05	39	3.10	38	3.12	38	3.14	38	3.15	37	3.16	

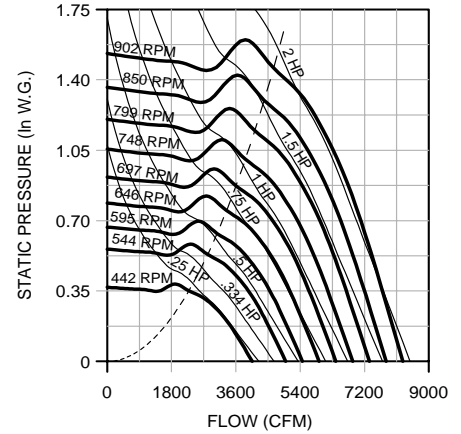
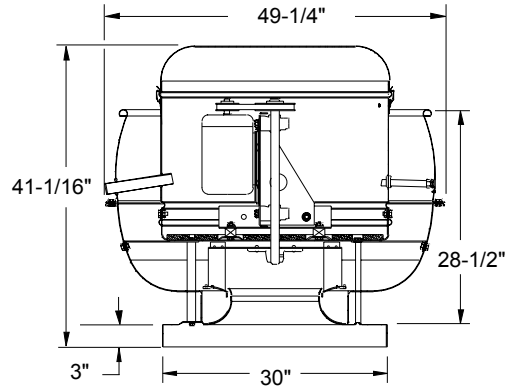
225 ACRUB-XP / ACSC-XP

Catalog Number	Mtr. HP/ Drv. Wt.	Fan RPM	Tip Speed	1.000" SP		1.250" SP		1.500" SP		1.750" SP		2.000" SP		2.250" SP		2.500" SP		3.000" SP		3.500" SP		4.000" SP		4.500" SP	
				Sone	BHP	Sone	BHP	Sone	BHP	Sone	BHP	Sone	BHP	Sone	BHP	Sone	BHP	Sone	BHP	Sone	BHP	Sone	BHP	Sone	BHP
225RX5B	1/2	1019	6002	1710		1493		1190																	
225SCX5B	23 lbs.			11.5	.48	11.4	.51	11.3	.48																
225RX6B	3/4	1173	6909	2147		2013		1847		1635															
225SCX6B	31 lbs.			14.9	.69	14.9	.73	14.8	.76	14.7	.77														
225RX7B	1	1294	7622	2474		2353		2232		2089		1908		1700											
225SCX7B	36 lbs.			17.3	.89	17.2	.93	17.1	.97	17.0	1.01	16.9	1.03	16.9	1.02										
225RX8B	1-1/2	1390	8187	2731		2613		2502		2388		2255		2091		1905									
225SCX8B	38 lbs.	1486	8753	19.2	1.08	19.0	1.12	18.9	1.17	18.8	1.21	18.8	1.25	18.7	1.28	18.6	1.28								
				2986		2871		2763		2660		2553		2430		2282		1924							
				21	1.29	21	1.34	21	1.39	21	1.43	21	1.48	21	1.52	20	1.56	20	1.54						
225RX9B	2	1562	9200	3185		3075		2968		2868		2770		2666		2547		2247		1852					
225SCX9B	50 lbs.	1637	9642	23	1.48	23	1.53	23	1.58	23	1.63	22	1.68	22	1.73	22	1.77	22	1.82	22	1.75				
				3380		3274		3170		3071		2977		2882		2782		2534		2221					
				25	1.68	25	1.74	25	1.79	24	1.84	24	1.89	24	1.94	24	1.99	24	2.08	24	2.08				
225RX10B	3	1718	10119	3587		3487		3387																	

245 ACRUB / ACSC

Wheel Diameter - 24.5 inches
Tip Speed (FPM) - 6.4 x RPM
Maximum RPM - 901
Maximum BHP - 2.8 x (RPM/1000)³
Maximum Motor Frame - 182T
Approx. Ship Wt. (Less Motor) - 264 lbs.
Roof Curb - RCG, RCA - 28
Roof Opening - 25-1/2 inches

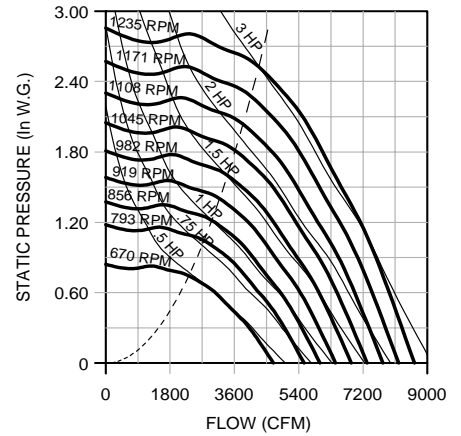
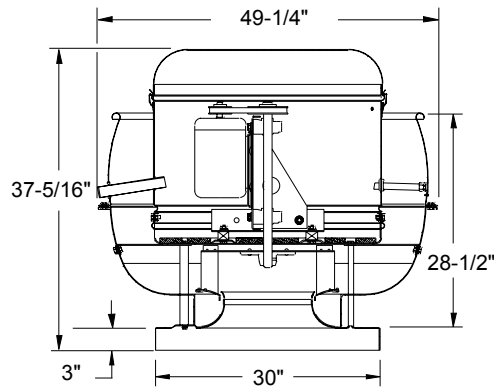
Material Gauges
Top Cap Lid - .063
Top Cap Cylinder - .040
Baffle - .080
Base - .080



245 ACRUB-HP / ACSC-HP

Wheel Diameter - 24.5 inches
Tip Speed (FPM) - 6.4 x RPM
Maximum RPM (Standard Wheel) - 1185
Maximum RPM (Reinforced Wheel) - 1234
Maximum BHP - 1.6 x (RPM/1000)³
Maximum Motor Frame - 182T
Approx. Ship Wt. (Less Motor) - 264 lbs.
Roof Curb - RCG, RCA - 28
Roof Opening - 25-1/2 inches

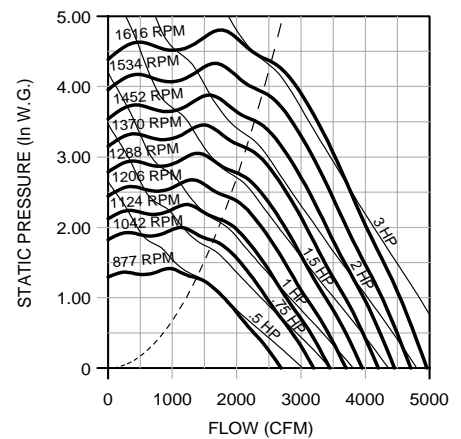
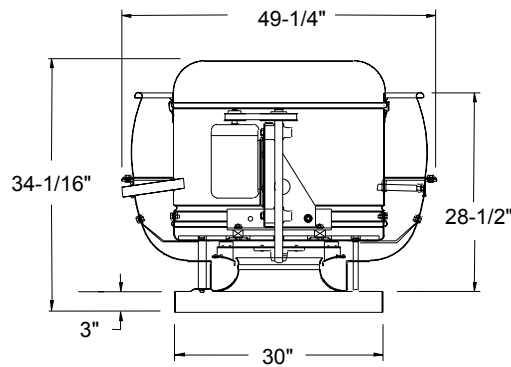
Material Gauges
Top Cap Lid - .063
Top Cap Cylinder - .040
Baffle - .080
Base - .080



245 ACRUB-XP / ACSC-XP

Wheel Diameter - 24.5 inches
Tip Speed (FPM) - 6.4 x RPM
Maximum RPM (Standard Wheel) - 1616
Maximum BHP - .75 x (RPM/1000)³
Maximum Motor Frame - 182T
Approx. Ship Wt. (Less Motor) - 264 lbs.
Roof Curb - RCG, RCA - 28
Roof Opening - 25-1/2 inches

Material Gauges
Top Cap Lid - .063
Top Cap Cylinder - .040
Baffle - .080
Base - .080



Performance certified is for Installation Type A: free inlet, free outlet. Power rating (BHP) does not include transmission losses. Performance ratings do not include the effects of appurtenances (accessories) in the airstream. The sound ratings shown are loudness values in fan sones at 5 ft. (1.5m) in a hemispherical free field calculated per AMCA Standard 301. Values shown are for Installation Type A: free inlet fan sone levels.

245 ACRUB / ACSC

Catalog Number	Mtr. HP/ Drv. Wt.	Fan RPM	Tip Speed	0.000" SP		0.125" SP		0.250" SP		0.375" SP		0.500" SP		0.625" SP		0.750" SP		0.875" SP		1.000" SP		1.250" SP		1.500" SP	
				Sone	BHP	Sone	BHP	Sone	BHP	Sone	BHP	Sone	BHP	Sone	BHP	Sone	BHP	Sone	BHP	Sone	BHP	Sone	BHP	Sone	BHP
245R3B	1/4	442	2835	4058		3639		3116																	
245SC3B	15 lbs.			7.2	.22	6.8	.24	6.3	.24																
245R4B	1/3	489	3136	4490		4114		3691		3060															
245SC4B	19 lbs.			9.0	.30	8.6	.32	8.2	.33	7.3	.33														
245R5B	1/2	561	3598	5151		4825		4481		4067		3471													
245SC5B	23 lbs.			11.9	.45	11.6	.48	11.3	.50	11.0	.50	9.7	.49												
245R6B	3/4	646	4143	5931		5649		5359		5047		4674		4185											
245SC6B	31 lbs.			14.8	.69	14.5	.72	14.2	.75	13.9	.77	13.6	.76	12.7	.76										
245R7B	1	679	4355	6234		5966		5692		5402		5074		4662		4104									
245SC7B	36 lbs.	712	4566	16.1	.80	15.7	.83	15.4	.86	15.1	.88	14.7	.89	14.4	.88	13.0	.87								
245R8B	1-1/2	765	4906	6537		6282		6022		5750		5453		5098		4650		3955							
245SC8B	38 lbs.	818	5246	17.2	.92	16.9	.95	16.6	.99	16.3	1.01	15.9	1.03	15.5	1.02	14.7	1.01	13.5	.95						
245R9B	2	860	5516	7023		6786		6546		6297		6035		5741		5391		4962		4325					
245SC9B	50 lbs.	902	5785	19.7	1.14	19.4	1.18	19.0	1.21	18.7	1.25	18.3	1.27	17.8	1.27	17.3	1.27	16.4	1.25	15.4	1.19				
				22	1.39	22	1.43	22	1.47	21	1.51	21	1.54	21	1.56	20	1.56	19.7	1.54	18.7	1.53				
				7896		7685		7472		7255		7032		6797		6542		6251		5912		4947			
				24	1.62	24	1.66	24	1.70	24	1.74	23	1.78	23	1.80	22	1.81	22	1.81	22	1.79	19.3	1.71		
				8281		8080		7878		7672		7461		7243		7011		6756		6465		5738			
				27	1.86	27	1.91	26	1.96	26	2.00	26	2.04	25	2.07	25	2.08	24	2.09	24	2.08	22	2.05		

245 ACRUB-HP / ACSC-HP

Catalog Number	Mtr. HP/ Drv. Wt.	Fan RPM	Tip Speed	0.250" SP		0.375" SP		0.500" SP		0.750" SP		1.000" SP		1.250" SP		1.500" SP		1.750" SP		2.000" SP		2.250" SP		2.500" SP	
				Sone	BHP	Sone	BHP	Sone	BHP	Sone	BHP	Sone	BHP	Sone	BHP	Sone	BHP	Sone	BHP	Sone	BHP	Sone	BHP	Sone	BHP
245RH5B	1/2	670	4297	4143		3805		3393																	
245SCH5B	23 lbs.			10.6	.47	10.0	.49	9.4	.50																
245RH6B	3/4	771	4945	4929		4675		4369		3661															
245SCH6B	31 lbs.			14.2	.71	13.8	.73	13.3	.74	12.0	.77														
245RH7B	1	811	5201	5233		4998		4730		4061		3255													
245SCH7B	36 lbs.	850	5451	15.3	.81	15.0	.84	14.6	.86	13.4	.89	12.1	.88												
				16.5	.93	16.2	.96	15.8	.98	14.7	1.02	13.5	1.03												
245RH8B	1-1/2	913	5856	5999		5796		5583		5056		4458		3732											
245SCH8B	38 lbs.	976	6260	18.4	1.14	18.2	1.18	17.8	1.20	16.9	1.25	15.8	1.28	14.7	1.26										
				6466		6279		6084		5640		5075		4522		3721									
				20	1.38	20	1.42	19.9	1.45	19.1	1.50	18.1	1.55	17.1	1.56	16.1	1.52								
245RH9B	2	1026	6580	6835		6657		6475		6076		5564		5036		4446									
245SCH9B	50 lbs.	1076	6901	22	1.59	22	1.64	22	1.68	21	1.72	19.9	1.75	18.9	1.81	18.1	1.80								
				7201		7033		6860		6494		6044		5526		5027		4353							
				24	1.82	24	1.87	24	1.92	23	1.98	22	2.03	21	2.08	20	2.09	19.2	2.05						
245RH10B	3	1156	7414	7785		7628		7470		7140		6769		6307		5832		5364		4738					
245SCH10B	74 lbs.	1235	7921	27	2.23	27	2.30	27	2.35	27	2.43	26	2.48	25	2.54	24	2.59	23	2.59	22	2.55				
				8358		8212		8065		7762		7437		7055		6603		6166		5725		5153			
				31	2.70	31	2.77	31	2.84	30	2.93	30	2.99	29	3.05	28	3.12	27	3.16	26	3.16	25	3.12		

245 ACRUB-XP / ACSC-XP

Catalog Number	Mtr. HP/ Drv. Wt.	Fan RPM	Tip Speed	1.000" SP		1.250" SP		1.500" SP		1.750" SP		2.000" SP		2.250" SP		2.500" SP		3.000" SP		3.500" SP		4.000" SP		4.500" SP	
				Sone	BHP	Sone	BHP	Sone	BHP	Sone	BHP	Sone	BHP	Sone	BHP	Sone	BHP	Sone	BHP	Sone	BHP	Sone	BHP	Sone	BHP
245RX5B	1/2	877	5625	1801		1469																			
245SCX5B	23 lbs.			10.8	.50	10.5	.50																		
245RX6B	3/4	1009	6471	2337		2137		1898																	
245SCX6B	31 lbs.			14.5	.73	14.4	.76	14.1	.77																
245RX7B	1	1113	7138	2730		2555		2374		2164		1887													
245SCX7B	36 lbs.			17.6	.94	17.6	.98	17.6	1.02	17.3	1.03	17.1	1.01												
245RX8B	1-1/2	1195	7664	3038		2866		2705		2534		2338		2099											
245SCX8B	38 lbs.	1278	8197	20	1.14	19.7	1.18	20	1.23	19.9	1.26	19.7	1.28	19.5	1.26										
				3348		3178		3023		2872		2711		2530		2320									
				22	1.37	22	1.41	22	1.46	22	1.51	22	1.55	21	1.56	21	1.56								
245RX9B	2	1343	8614	3586		3422		3267		3123		2978		2822		2647									
245SCX9B	50 lbs.	1408	9031	24	1.56	23	1.61	23	1.66	23	1.71	23	1.76	23	1.80	23	1.82								
				3820		3665		3511		3369		3233		3093		2941		2585							
				25	1.78	25	1.83	25	1.88	24	1.94	24	1.99	24	2.04	24	2.08	24	2.08						
245RX10B	3	1477	9473	4063		3920		3771		3628		3495		3365		3231		2928		2530					
245SCX10B	74 lbs.	1546	9916	27	2.03	27	2.09	27	2.14	26	2.20	26	2.25	26	2.31	26	2.36	26	2.42	25	2.38				
				4302		4170		4029		3888		3755		3629		3505		3237		2923					
				29	2.30	29	2.37	29	2.43	28	2.48	28	2.54	28	2.60	28	2.66	27	2.75	27	2.77				
				4540		4419		4287		4150		4018		3894		3774		3531		3258		2931			
				31	2.59	31	2.67	31	2.74	31	2.80	30	2.85	30	2.92	30	2.98	30	3.09	29	3.16	29	3.15		

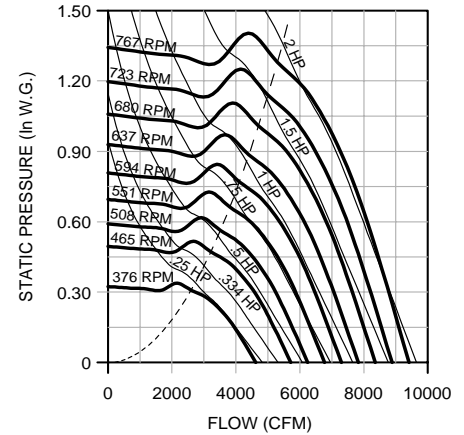
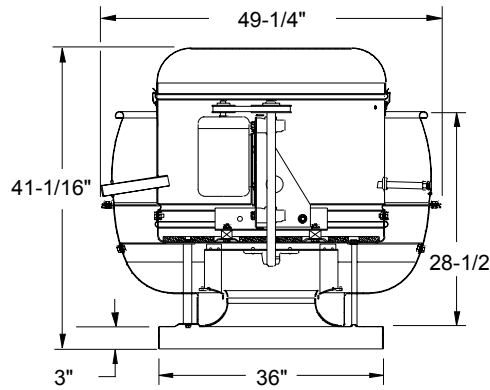
Performance certified is for Installation Type A: free inlet, free outlet. Power rating (BHP) does not include transmission losses. Performance ratings do not include the effects of appurtenances (accessories) in the airstream. The sound ratings shown are loudness values in fan sones at 5 ft. (1.5m) in a hemispherical free field calculated per AMCA Standard 301. Values shown are for Installation Type A: free inlet fan sone levels. **Shaded area indicates reinforced wheel required.**

270 ACRUB / ACSC

Wheel Diameter - 27 inches
Tip Speed (FPM) - 7.1 x RPM
Maximum RPM - 766
Maximum BHP - 4.6 x (RPM/1000)³
Maximum Motor Frame - 182T
Approx. Ship Wt. (Less Motor) - 286 lbs.
Roof Curb - RCG, RCA - 34
Roof Opening - 31-1/2 inches

Material Gauges

Top Cap Lid - .063
Top Cap Cylinder - .040
Baffle - .080
Base - .080

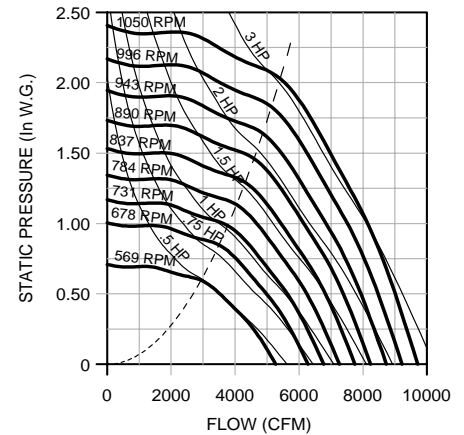
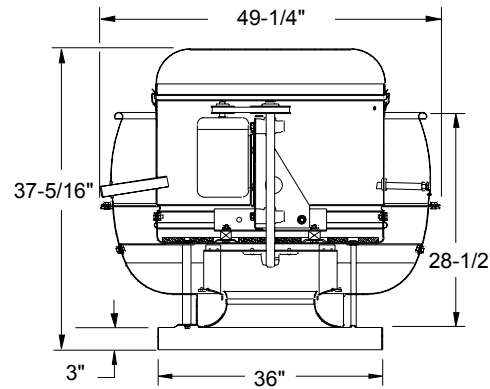


270 ACRUB-HP / ACSC-HP

Wheel Diameter - 27 inches
Tip Speed (FPM) - 7.1 x RPM
Maximum RPM (Standard Wheel) - 1025
Maximum RPM (Reinforced Wheel) - 1049
Maximum BHP - 2.7 x (RPM/1000)³
Maximum Motor Frame - 182T
Approx. Ship Wt. (Less Motor) - 286 lbs.
Roof Curb - RCG, RCA - 34
Roof Opening - 31-1/2 inches

Material Gauges

Top Cap Lid - .063
Top Cap Cylinder - .040
Baffle - .080
Base - .080

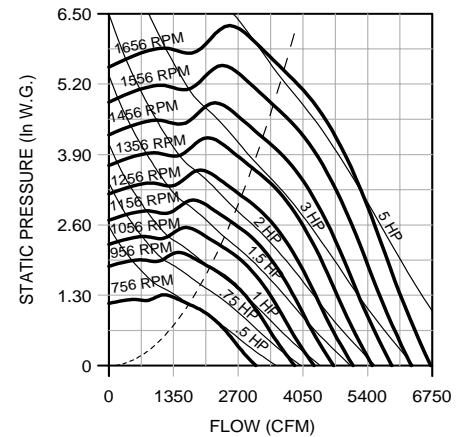
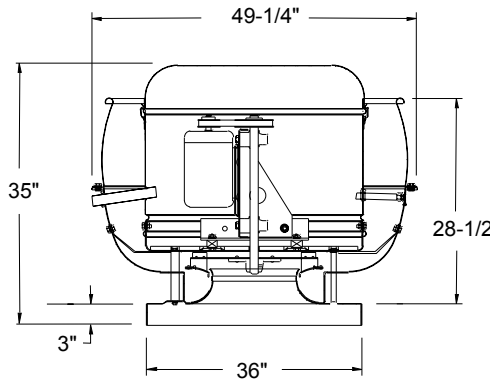


270 ACRUB-XP / ACSC-XP

Wheel Diameter - 27 inches
Tip Speed (FPM) - 7.1 x RPM
Maximum RPM - 1656
Maximum BHP - 1.17 x (RPM/1000)³
Maximum Motor Frame - 182T
Approx. Ship Wt. (Less Motor) - 286 lbs.
Roof Curb - RCG, RCA - 34
Roof Opening - 31-1/2 inches

Material Gauges

Top Cap Lid - .063
Top Cap Cylinder - .040
Baffle - .080
Base - .080



Performance certified is for Installation Type A: free inlet, free outlet. Power rating (BHP) does not include transmission losses. Performance ratings do not include the effects of appurtenances (accessories) in the airstream. The sound ratings shown are loudness values in fan sones at 5 ft. (1.5m) in a hemispherical free field calculated per AMCA Standard 301. Values shown are for Installation Type A: free inlet fan sone levels.

270 ACRUB / ACSC

Catalog Number	Mtr. HP/ Drv. Wt.	Fan RPM	Tip Speed	0.000" SP		0.125" SP		0.250" SP		0.375" SP		0.500" SP		0.625" SP		0.750" SP		0.875" SP		1.000" SP		1.250" SP		1.500" SP			
				Sone	BHP	Sone	BHP	Sone	BHP	Sone	BHP	Sone	BHP	Sone	BHP	Sone	BHP	Sone	BHP	Sone	BHP	Sone	BHP	Sone	BHP	Sone	BHP
270R3B	1/4	376	2657	4620		4073		3320																			
270SC3B	15 lbs.			5.0	.22	4.7	.24	4.1	.24																		
270R4B	1/3	416	2940	5112		4623		4039																			
270SC4B	19 lbs.			6.3	.30	6.0	.32	5.4	.33																		
270R5B	1/2	477	3371	5861		5439		4981		4381																	
270SC5B	23 lbs.			8.4	.45	8.3	.48	7.5	.50	7.1	.50																
270R6B	3/4	549	3880	6746		6381		6000		5576		5025		4158													
270SC6B	31 lbs.			11.5	.68	11.5	.72	10.6	.75	9.9	.77	9.4	.76	9.0	.72												
270R7B	1	577	4078	7090		6743		6384		5995		5523		4889													
270SC7B	36 lbs.	606	4283	12.4	.79	12.4	.83	11.6	.87	10.9	.89	10.4	.88	9.9	.87												
				7.447		7.116		6.777		6.416		6.001		5.472		4.701											
270R8B	1-1/2	651	4601	7999		7692		7379		7052		6696		6274		5746		4965									
270SC8B	38 lbs.	696	4919	14.9	1.14	14.9	1.18	14.5	1.23	13.7	1.26	13.1	1.28	12.6	1.27	12.2	1.26	11.7	1.20								
				8.552		8.265		7.974		7.673		7.355		7.000		6.578		6.063		5.310							
				16.4	1.39	16.4	1.44	16.2	1.49	15.5	1.52	14.8	1.55	14.4	1.56	14.0	1.55	13.6	1.54	13.2	1.47						
270R9B	2	732	5174	8995		8722		8445		8162		7867		7549		7185		6753		6231							
270SC9B	50 lbs.	767	5421	17.7	1.61	17.7	1.67	17.6	1.72	17.0	1.76	16.4	1.79	15.8	1.81	15.4	1.81	15.0	1.80	14.6	1.78						
				9.425		9.164		8.901		8.633		8.355		8.062		7.740		7.368		6.930		5.565					
				18.9	1.86	18.9	1.92	18.9	1.97	18.4	2.01	17.8	2.05	17.3	2.08	16.9	2.09	16.5	2.08	16.1	2.06	15.4	1.89				

270 ACRUB-HP / ACSC-HP

Catalog Number	Mtr. HP/ Drv. Wt.	Fan RPM	Tip Speed	0.250" SP		0.375" SP		0.500" SP		0.750" SP		1.000" SP		1.250" SP		1.500" SP		1.750" SP		2.000" SP		2.250" SP		2.500" SP			
				Sone	BHP	Sone	BHP	Sone	BHP	Sone	BHP	Sone	BHP	Sone	BHP	Sone	BHP	Sone	BHP	Sone	BHP	Sone	BHP	Sone	BHP	Sone	BHP
270RH5B	1/2	569	4022	4576		4080		3523																			
270SCH5B	23 lbs.			9.9	.47	9.1	.50	8.4	.50																		
270RH6B	3/4	655	4629	5489		5136		4685		3652																	
270SCH6B	31 lbs.			13.9	.70	12.8	.73	12.0	.76	10.8	.76																
270RH7B	1	689	4870	5837		5518		5122		4200																	
270SCH7B	36 lbs.	723	5110	15.6	.81	14.5	.84	13.6	.87	12.3	.89																
				16.8	.93	16.0	.96	15.0	1.00	13.6	1.03																
270RH8B	1-1/2	777	5492	6721		6461		6164		5406		4565															
270SCH8B	38 lbs.	830	5866	18.7	1.14	18.2	1.18	17.2	1.21	15.7	1.27	14.7	1.27														
				7.245		7.008		6.747		6.098		5.339		4.405													
				21	1.37	21	1.42	19.5	1.46	17.8	1.53	16.7	1.56	16.1	1.53												
270RH9B	2	872	6163	7656		7434		7195		6622		5908		5156													
270SCH9B	50 lbs.	915	6467	22	1.58	22	1.63	22	1.68	19.7	1.75	18.4	1.80	17.6	1.80												
				8.075		7.867		7.645		7.132		6.477		5.789		4.947											
				24	1.82	24	1.87	24	1.92	22	2.00	20	2.07	19.3	2.09	18.7	2.05										
270RH10B	3	983	6948	8734		8542		8342		7898		7352		6713		6066		5232									
270SCH10B	74 lbs.	1050	7422	27	2.24	27	2.29	27	2.35	25	2.44	24	2.53	23	2.58	22	2.59	21	2.54								
				9.378		9.201		9.018		8.622		8.159		7.595		6.995		6.378		5.574							
				31	2.71	31	2.77	31	2.83	29	2.94	27	3.03	26	3.11	25	3.15	24	3.15	23	3.09						

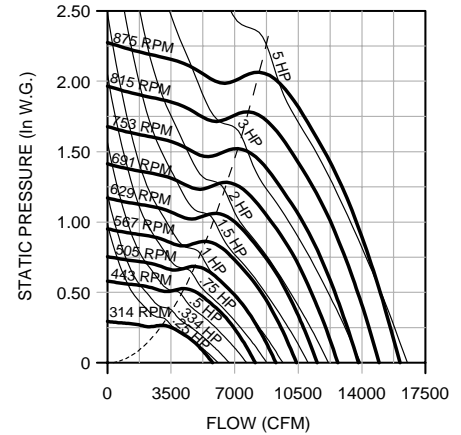
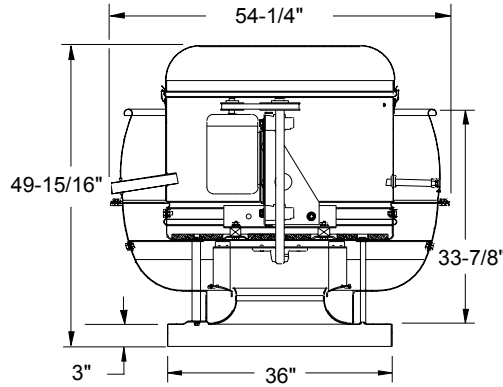
270 ACRUB-XP / ACSC-XP

Catalog Number	Mtr. HP/ Drv. Wt.	Fan RPM	Tip Speed	1.000" SP		1.250" SP		1.500" SP		1.750" SP		2.000" SP		2.250" SP		2.500" SP		3.000" SP		3.500" SP		4.000" SP		4.500" SP			
				Sone	BHP	Sone	BHP	Sone	BHP	Sone	BHP	Sone	BHP	Sone	BHP	Sone	BHP	Sone	BHP	Sone	BHP	Sone	BHP	Sone	BHP	Sone	BHP
270RX5B	1/2	756	5343	1974																							
270SCX5B	23 lbs.			12.1	.51																						
270RX6B	3/4	869	6142	2661		2374																					
270SCX6B	31 lbs.			14.3	.74	14.5	.77																				
270RX7B	1	959	6778	3117		2907		2647		2270																	
270SCX7B	36 lbs.			16.3	.96	16.3	1.00	16.5	1.03	17.0	1.02																
270RX8B	1-1/2	1101	7782	3781		3624		3451		3253		3015		2697													
270SCX8B	38 lbs.			19.3	1.37	19.3	1.44	19.3	1.49	19.4	1.53	19.7	1.56	20	1.56												
270RX9B	2	1157	8178	4035		3888		3732		3559		3362		3125		2811											
270SCX9B	50 lbs.	1214	8581	21	1.56	21	1.63	21	1.69	21	1.75	21	1.79	22	1.81	22	1.81										
				4.289		4.150		4.008		3.853		3.682		3.488		3.256											
				24	1.77	23	1.85	23	1.92	23	1.98	23	2.03	23	2.07	24	2.09										
270RX10B	3	1304	9217	4688		4558		4428		4294		4151		3994		3820		3379									
270SCX10B	74 lbs.	1393	9846	27	2.14	27	2.23	27	2.31	27	2.38	27	2.45	27	2.51	27	2.55	28	2.59								
				5.079		4.954		4.833		4.711		4.585		4.452		4.307		3.974		3.529							
				32	2.56	31	2.65	31	2.74	31	2.83	31	2.91	31	2.98	31	3.04	31	3.13	32	3.16						
270RX11B	5	1525	10779	5655		5537		5423		5312		5201		5088		4971		4713		4414		4043		3519			
270SCX11B	98 lbs.	1656	11705	39	3.27	38	3.38	38	3.48	38	3.58	38	3.68	38	3.76	38	3.85	38									

300 ACRUB / ACSC

Wheel Diameter - 30 inches
Tip Speed (FPM) - 7.9 x RPM
Maximum RPM (Standard Wheel) - 837
Maximum RPM (Reinforced Wheel) - 877
Maximum BHP - 7.9 x (RPM/1000)³
Maximum Motor Frame - 213T
Approx. Ship Wt. (Less Motor) - 336 lbs.
Roof Curb - RCG, RCA - 34
Roof Opening - 31-1/2 inches

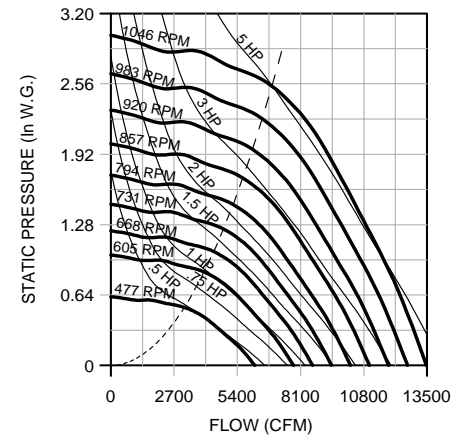
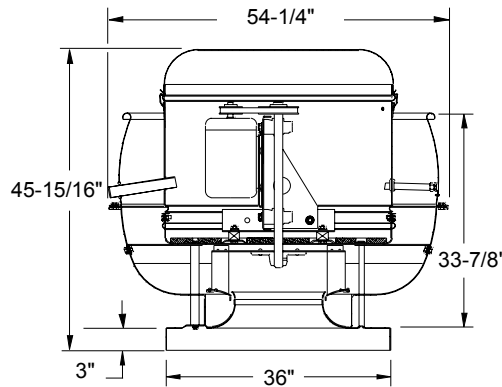
Material Gauges
Top Cap Lid - .063
Top Cap Cylinder - .050
Baffle - .080
Base - .080



300 ACRUB-HP / ACSC-HP

Wheel Diameter - 30 inches
Tip Speed (FPM) - 7.9 x RPM
Maximum RPM (Standard Wheel) - 980
Maximum RPM (Reinforced Wheel) - 1046
Maximum BHP - 4.6 x (RPM/1000)³
Maximum Motor Frame - 213T
Approx. Ship Wt. (Less Motor) - 336 lbs.
Roof Curb - RCG, RCA - 34
Roof Opening - 31-1/2 inches

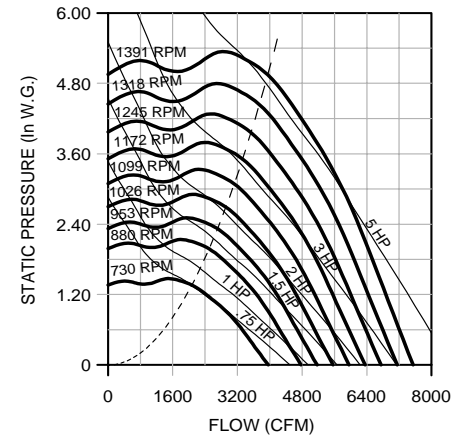
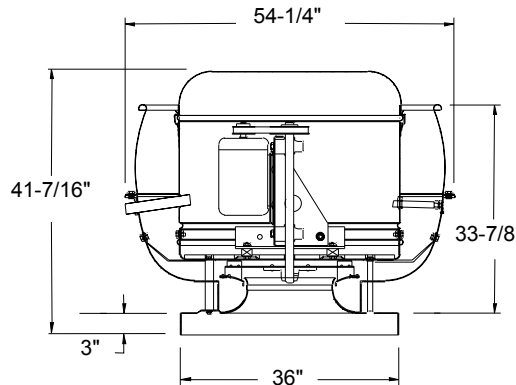
Material Gauges
Top Cap Lid - .063
Top Cap Cylinder - .050
Baffle - .080
Base - .080



300 ACRUB-XP / ACSC-XP

Wheel Diameter - 30 inches
Tip Speed (FPM) - 7.9 x RPM
Maximum RPM - 1391
Maximum BHP - 1.97 x (RPM/1000)³
Maximum Motor Frame - 213T
Approx. Ship Wt. (Less Motor) - 336 lbs.
Roof Curb - RCG, RCA - 34
Roof Opening - 31-1/2 inches

Material Gauges
Top Cap Lid - .063
Top Cap Cylinder - .050
Baffle - .080
Base - .080



Performance certified is for Installation Type A: free inlet, free outlet. Power rating (BHP) does not include transmission losses. Performance ratings do not include the effects of appurtenances (accessories) in the airstream. The sound ratings shown are loudness values in fan sones at 5 ft. (1.5m) in a hemispherical free field calculated per AMCA Standard 301. Values shown are for Installation Type A: free inlet fan sone levels.

300 ACRUB / ACSC

Catalog Number	Mtr. HP/ Drv. Wt.	Fan RPM	Tip Speed	0.000" SP		0.125" SP		0.250" SP		0.375" SP		0.500" SP		0.625" SP		0.750" SP		0.875" SP		1.000" SP		1.250" SP		1.500" SP			
				Sone	BHP	Sone	BHP	Sone	BHP	Sone	BHP	Sone	BHP	Sone	BHP	Sone	BHP	Sone	BHP	Sone	BHP	Sone	BHP	Sone	BHP	Sone	BHP
300R3B 300SC3B	1/4 15 lbs.	314	2466	5763		4932		3486																			
300R4B 300SC4B	1/3 19 lbs.	348	2733	6387		5664		4589																			
300R5B 300SC5B	1/2 23 lbs.	399	3133	7323		6716		5941		4788																	
300R6B 300SC6B	3/4 31 lbs.	459	3604	8424		7910		7302		6532		5471															
300R7B 300SC7B	1 36 lbs.	507	3981	9305		8845		8321		7709		6916		5907													
300R8B 300SC8B	1-1/2 38 lbs.	582	4571	10682		10285		9855		9370		8822		8151		7327		6284									
300R9B 300SC9B	2 50 lbs.	641	5034	11765		11406		11027		10608		10150		9637		9023		8287		7461							
300R10B 300SC10B	3 74 lbs.	736	5780	13508		13197		12876		12534		12163		11768		11340		10862		10306		8982					
300R11B 300SC11B	5 98 lbs.	806	6330	14793		14509		14219		13917		13593		13248		12886		12497		12075		11058		9831			
		875	6872	16060		15798		15533		15260		14972		14668		14347		14013		13660		12868		11891			
				31	4.61	31	4.69	31	4.77	31	4.85	30	4.93	29	5.01	29	5.09	28	5.16	27	5.21	26	5.28	25	5.27		

300 ACRUB-HP / ACSC-HP

Catalog Number	Mtr. HP/ Drv. Wt.	Fan RPM	Tip Speed	0.250" SP		0.375" SP		0.500" SP		0.750" SP		1.000" SP		1.250" SP		1.500" SP		1.750" SP		2.000" SP		2.250" SP		2.500" SP			
				Sone	BHP	Sone	BHP	Sone	BHP	Sone	BHP	Sone	BHP	Sone	BHP	Sone	BHP	Sone	BHP	Sone	BHP	Sone	BHP	Sone	BHP	Sone	BHP
300RH5B 300SCH5B	1/2 23 lbs.	477	3746	5050		4371		3466																			
300RH6B 300SCH6B	3/4 31 lbs.	549	4311	6182		4607		5015																			
300RH7B 300SCH7B	1 36 lbs.	606	4759	7030		6536		6007		4813																	
300RH8B 300SCH8B	1-1/2 38 lbs.	651 696	5112 5466	7678		7244		6757		5746																	
300RH9B 300SCH9B	2 50 lbs.	767	6024	8312		7928		7487		6562		5467															
300RH10B 300SCH10B	3 74 lbs.	823 880	6463 6911	9295		8970		8600		7774		6920		5833													
				10060		9767		9443		8695		7914		7081		5910											
				22		2.25		22		2.32		21		2.39		19.8		2.48		18.5		2.53		17.4		2.57	
				10832		10564		10276		9608		8882		8144		7319		6108									
				25		2.72		25		2.80		24		2.88		23		3.00		21		3.07		20		3.11	
				19.0		3.15		18.2		3.03																	
300RH11B 300SCH11B	5 98 lbs.	963 1046	7563 8215	11947		11708		11457		10892		10245		9580		8903		8163		7185							
				28		3.53		28		3.62		28		3.71		27		3.86		25		3.97		24		4.03	
				13055		12837		12612		12124		11564		10956		10343		9721		9055		8249		7112			
				32		4.49		32		4.59		32		4.68		31		4.86		30		5.01		29		5.11	
				27		5.16		26		5.22		25		5.28		24		5.26		24		5.05					

300 ACRUB-XP / ACSC-XP

Catalog Number	Mtr. HP/ Drv. Wt.	Fan RPM	Tip Speed	1.000" SP		1.250" SP		1.500" SP		1.750" SP		2.000" SP		2.250" SP		2.500" SP		3.000" SP		3.500" SP		4.000" SP		4.500" SP			
				Sone	BHP	Sone	BHP	Sone	BHP	Sone	BHP	Sone	BHP	Sone	BHP	Sone	BHP	Sone	BHP	Sone	BHP	Sone	BHP	Sone	BHP	Sone	BHP
300RX6B 300SCX6B	3/4 31 lbs.	730	5733	2786		2334																					
300RX7B 300SCX7B	1 36 lbs.	806	6330	12.1		.75		12.9		.77																	
300RX8B 300SCX8B	1-1/2 38 lbs.	866 925	6801 7264	3371		3029		2619																			
				13.9		.98		14.4		1.01		15.1		1.03													
				3787		3510		3171		2783																	
				15.8		1.18		15.4		1.23		16.1		1.26		16.8		1.28									
				4174		3938		3662		3333		2968															
				17.5		1.4		17.1		1.46		17.2		1.51		17.8		1.54		18.4		1.56					
300RX9B 300SCX9B	2 50 lbs.	972 1019	7634 8003	4472		4259		4018		3738		3411		3056													
				18.9		1.59		18.6		1.67		18.3		1.72		18.7		1.76		19.3		1.80		19.8		1.81	
				4764		4568		4353		4109		3827		3508		3164											
				20		1.79		20		1.88		19.9		1.95		19.8		2.00		20		2.04		21		2.08	
				22		2.08																					
300RX10B 300SCX10B	3 74 lbs.	1095 1170	8600 9189	5229		5051		4866		4663		4436		4179		3889		3227									
				23		2.15		23		2.26		23		2.36		22		2.43		22		2.48		23		2.53	
				23		2.57		25		2.56																	
				5680		5516		5348		5172		4981		4770		4535		3989									
				26		2.56		26		2.68		26		2.79		25		2.89		25		2.96		25		3.02	
				25		3.07		25		3.07		25		3.07		27		3.15									
300RX11B 300SCX11B	5 98 lbs.	1280 1391	10053 10924	6333		6182		6032		5879		5720		5552		5369		4954		4458		3906					
				31		3.26		31		3.38		30		3.51		30		3.63		30		3.74		30		3.84	
				6983		6843		6705		6567		6427		6283		6132		5802		5419		4972		4486			
				37		4.08		36		4.22		36		4.35		35		4.49		35		4.63		35		4.75	
				35		4.86		34		5.03		35		5.15		36		5.26		37		5.31					

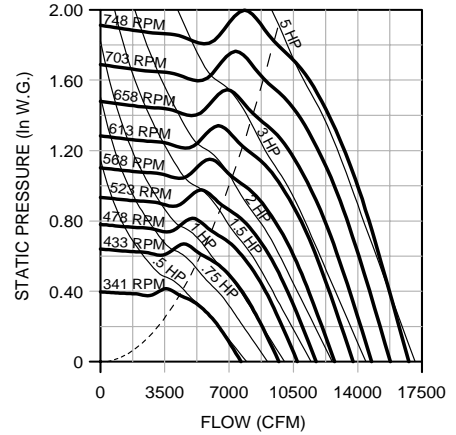
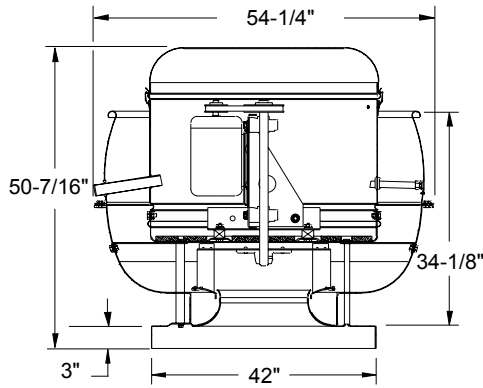
Performance certified is for Installation Type A: free inlet, free outlet. Power rating (BHP) does not include transmission losses. Performance ratings do not include the effects of appurtenances (accessories) in the airstream. The sound ratings shown are loudness values in fan sones at 5 ft. (1.5m) in a hemispherical free field calculated per AMCA Standard 301. Values shown are for Installation Type A: free inlet fan sone levels. **Shaded area indicates reinforced wheel required.**

330 ACRUB / ACSC

Wheel Diameter - 33 inches
Tip Speed (FPM) - 8.6 x RPM
Maximum RPM (Standard Wheel) - 716
Maximum RPM (Reinforced Wheel) - 748
Maximum BHP - $12.6 \times (\text{RPM}/1000)^3$
Maximum Motor Frame - 213T
Approx. Ship Wt. (Less Motor) - 374 lbs.
Roof Curb - RCG, RCA - 40
Roof Opening - 37-1/2 inches

Material Gauges

Top Cap Lid - .063
Top Cap Cylinder - .050
Baffle - .080
Base - .080

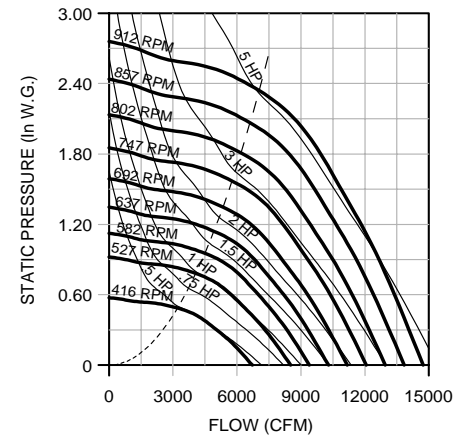
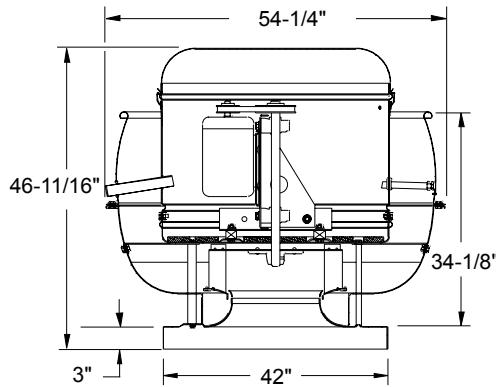


330 ACRUB-HP / ACSC-HP

Wheel Diameter - 33 inches
Tip Speed (FPM) - 8.6 x RPM
Maximum RPM (Standard Wheel) - 830
Maximum RPM (Reinforced Wheel) - 912
Maximum BHP - $7.0 \times (\text{RPM}/1000)^3$
Maximum Motor Frame - 213T
Approx. Ship Wt. (Less Motor) - 374 lbs.
Roof Curb - RCG, RCA - 40
Roof Opening - 37-1/2 inches

Material Gauges

Top Cap Lid - .063
Top Cap Cylinder - .050
Baffle - .080
Base - .080

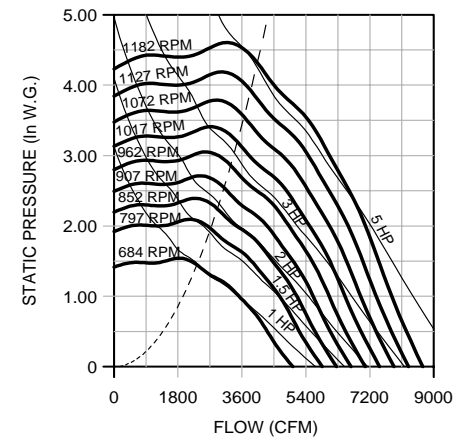
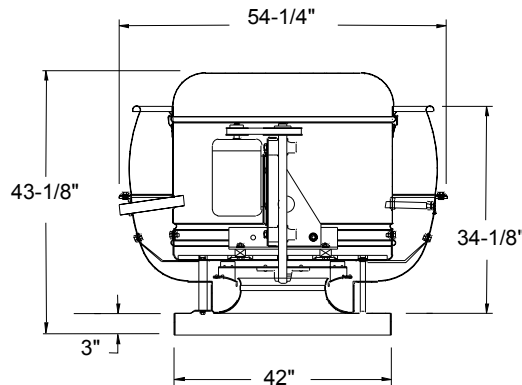


330 ACRUB-XP / ACSC-XP

Wheel Diameter - 33 inches
Tip Speed (FPM) - 8.6 x RPM
Maximum RPM - 1182
Maximum BHP - $3.21 \times (\text{RPM}/1000)^3$
Maximum Motor Frame - 213T
Approx. Ship Wt. (Less Motor) - 374 lbs.
Roof Curb - RCG, RCA - 40
Roof Opening - 37-1/2 inches

Material Gauges

Top Cap Lid - .063
Top Cap Cylinder - .050
Baffle - .080
Base - .080



Performance certified is for Installation Type A: free inlet, free outlet. Power rating (BHP) does not include transmission losses. Performance ratings do not include the effects of appurtenances (accessories) in the airstream. The sound ratings shown are loudness values in fan sones at 5 ft. (1.5m) in a hemispherical free field calculated per AMCA Standard 301. Values shown are for Installation Type A: free inlet fan sone levels.

330 ACRUB / ACSC

Catalog Number	Mtr. HP/ Drv. Wt.	Fan RPM	Tip Speed	0.000" SP		0.125" SP		0.250" SP		0.375" SP		0.500" SP		0.625" SP		0.750" SP		0.875" SP		1.000" SP		1.250" SP		1.500" SP			
				Sone	BHP	Sone	BHP	Sone	BHP	Sone	BHP	Sone	BHP	Sone	BHP	Sone	BHP	Sone	BHP	Sone	BHP	Sone	BHP	Sone	BHP	Sone	BHP
330R5B 330SC5B	1/2 23 lbs.	341	2946	7650		6920		6050		4379																	
330R6B 330SC6B	3/4 31 lbs.	393	3395	8817		8189		7512		6630		5013															
330R7B 330SC7B	1 36 lbs.	433	3740	9714		9147		8551		7866		6934															
330R8B 330SC8B	1-1/2 38 lbs.	498	4302	11173		10681		10176		9639		9024		8243		7127											
330R9B 330SC9B	2 50 lbs.	523 548	4518 4734	11734		11265		10787		10286		9734		9066		8220		6813									
330R10B 330SC10B	3 74 lbs.	588 629	5079 5434	13192		12776		12354		11921		11468		10974		10400		9711		8849							
330R11B 330SC11B	5 98 lbs.	689 748	5952 6462	15458		15103		14746		14384		14014		13632		13231		12798		12312		11122		9180			

330 ACRUB-HP / ACSC-HP

Catalog Number	Mtr. HP/ Drv. Wt.	Fan RPM	Tip Speed	0.250" SP		0.375" SP		0.500" SP		0.750" SP		1.000" SP		1.250" SP		1.500" SP		1.750" SP		2.000" SP		2.250" SP		2.500" SP	
				Sone	BHP	Sone	BHP	Sone	BHP	Sone	BHP	Sone	BHP	Sone	BHP	Sone	BHP	Sone	BHP	Sone	BHP	Sone	BHP	Sone	BHP
330RH5B 330SCH5B	1/2 23 lbs.	416	3593	5392		4522																			
330RH6B 330SCH6B	3/4 31 lbs.	479	4138	6641		5951		5189																	
330RH7B 330SCH7B	1 36 lbs.	528	4561	7553		6985		6319		4552															
330RH8B 330SCH8B	1-1/2 38 lbs.	567 606	4898 5235	8259		7756		7173		5850															
330RH9B 330SCH9B	2 50 lbs.	668	5771	10037		9640		9212		8210		7104													
330RH10B 330SCH10B	3 74 lbs.	718 767	6203 6626	10900		10537		10153		9286		8292		7157											
330RH11B 330SCH11B	5 98 lbs.	839 912	7248 7879	12958		12654		12343		11680		10930		10083		9215		8146							

330 ACRUB-XP / ACSC-XP

Catalog Number	Mtr. HP/ Drv. Wt.	Fan RPM	Tip Speed	1.000" SP		1.250" SP		1.500" SP		1.750" SP		2.000" SP		2.250" SP		2.500" SP		3.000" SP		3.500" SP		4.000" SP		4.500" SP	
				Sone	BHP	Sone	BHP	Sone	BHP	Sone	BHP	Sone	BHP	Sone	BHP	Sone	BHP	Sone	BHP	Sone	BHP	Sone	BHP	Sone	BHP
330RX7B 330SCX7B	1 36 lbs.	684	5909	3521		2913																			
330RX8B 330SCX8B	1-1/2 38 lbs.	735 786	6349 6790	4058		3615		2932																	
330RX9B 330SCX9B	2 50 lbs.	826 866	7136 7481	4922		4580		4187		3731		3045													
330RX10B 330SCX10B	3 74 lbs.	930 994	8034 8587	5798		5560		5269		4925		4576		4124		3496									
330RX11B 330SCX11B	5 98 lbs.	1057 1120 1182	9131 9676 10211	6822		6623		6419		6190		5918		5611		5305		4463							

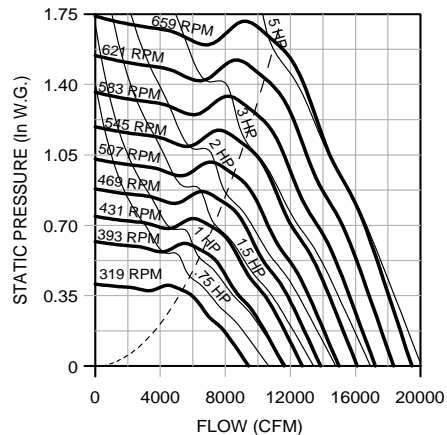
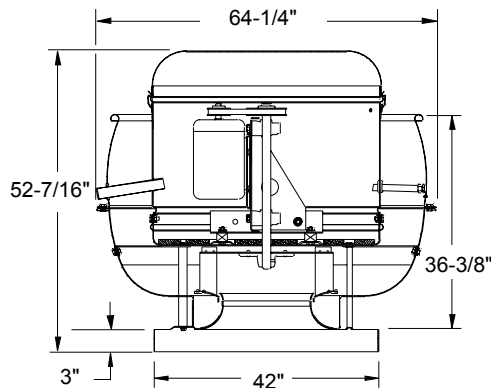
Performance certified is for Installation Type A: free inlet, free outlet. Power rating (BHP) does not include transmission losses. Performance ratings do not include the effects of appurtenances (accessories) in the airstream. The sound ratings shown are loudness values in fan sones at 5 ft. (1.5m) in a hemispherical free field calculated per AMCA Standard 301. Values shown are for Installation Type A: free inlet fan sone levels. **Shaded area indicates reinforced wheel required.**

365 ACRUB / ACSC

Wheel Diameter - 36.5 inches
Tip Speed (FPM) - 9.6 x RPM
Maximum RPM (Standard Wheel) - 624
Maximum RPM (Reinforced Wheel) - 659
Maximum BHP - $18.3 \times (\text{RPM}/1000)^3$
Maximum Motor Frame - 213T
Approx. Ship Wt. (Less Motor) - 420 lbs.
Roof Curb - RCG, RCA - 40
Roof Opening - 37-1/2 inches

Material Gauges

Top Cap Lid - .063
Top Cap Cylinder - .050
Baffle - .080
Base - .080

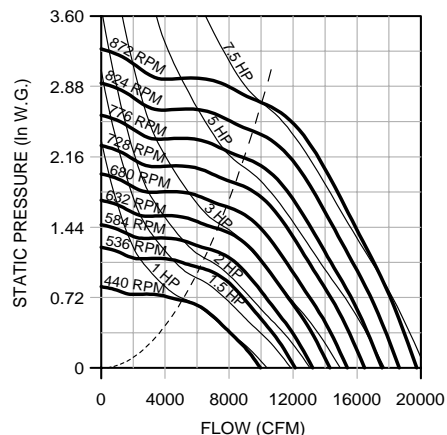
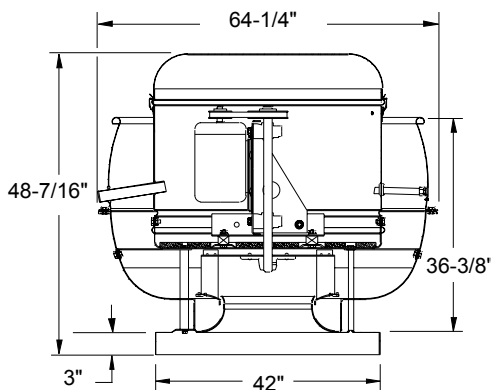


365 ACRUB-HP / ACSC-HP

Wheel Diameter - 36.5 inches
Tip Speed (FPM) - 9.6 x RPM
Maximum RPM (Standard Wheel) - 735
Maximum RPM (Reinforced Wheel) - 872
Maximum BHP - $12.0 \times (\text{RPM}/1000)^3$
Maximum Motor Frame - 213T
Approx. Ship Wt. (Less Motor) - 420 lbs.
Roof Curb - RCG, RCA - 40
Roof Opening - 37-1/2 inches

Material Gauges

Top Cap Lid - .063
Top Cap Cylinder - .050
Baffle - .080
Base - .080

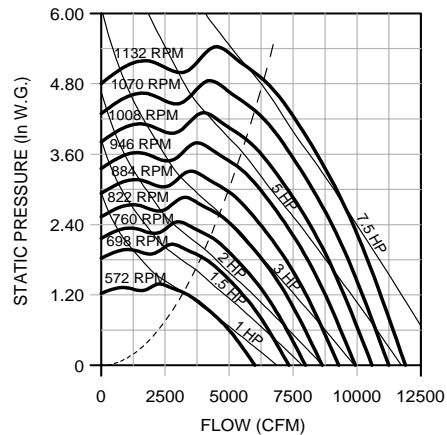
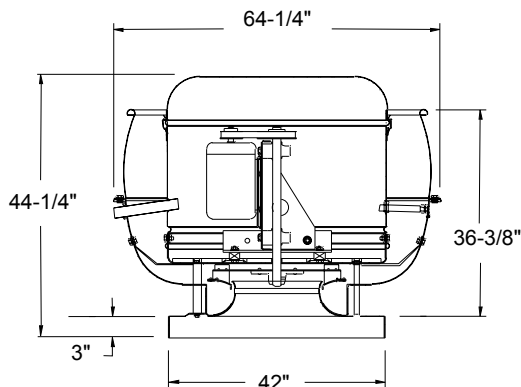


365 ACRUB-XP / ACSC-XP

Wheel Diameter - 36.5 inches
Tip Speed (FPM) - 9.6 x RPM
Maximum RPM - 1132
Maximum BHP - $5.48 \times (\text{RPM}/1000)^3$
Maximum Motor Frame - 213T
Approx. Ship Wt. (Less Motor) - 420 lbs.
Roof Curb - RCG, RCA - 40
Roof Opening - 37-1/2 inches

Material Gauges

Top Cap Lid - .063
Top Cap Cylinder - .050
Baffle - .080
Base - .080



Performance certified is for Installation Type A: free inlet, free outlet. Power rating (BHP) does not include transmission losses. Performance ratings do not include the effects of appurtenances (accessories) in the airstream. The sound ratings shown are loudness values in fan sones at 5 ft. (1.5m) in a hemispherical free field calculated per AMCA Standard 301. Values shown are for Installation Type A: free inlet fan sone levels.

365 ACRUB / ACSC

Catalog Number	Mtr. HP/ Drv. Wt.	Fan RPM	Tip Speed	0.000" SP		0.125" SP		0.250" SP		0.375" SP		0.500" SP		0.625" SP		0.750" SP		0.875" SP		1.000" SP		1.250" SP		1.500" SP			
				Sone	BHP	Sone	BHP	Sone	BHP	Sone	BHP	Sone	BHP	Sone	BHP	Sone	BHP	Sone	BHP	Sone	BHP	Sone	BHP	Sone	BHP	Sone	BHP
365R6B	3/4	319	3048	9425		8374		6939		5421																	
365SC6B	31 lbs.	346	3306	7.6	.52	7.2	.55	6.4	.57	5.6	.59																
365R7B	1	382	3650	11286		10415		9479		8170		7149															
365SC7B	36 lbs.			10.9	.89	10.5	.93	9.7	.96	8.9	.99	8.2	1.02														
365R8B	1-1/2	438	4185	12940		12183		11406		10474		9322		8485													
365SC8B	38 lbs.			14.2	1.34	14.1	1.39	13.2	1.43	12.4	1.16	11.6	1.49	10.9	1.53												
365R9B	2	460	4395	13590		12870		12135		11323		10163		9336		8315											
365SC9B	50 lbs.	483	4615	15.5	1.55	15.5	1.60	14.6	1.65	13.8	1.69	13.0	1.71	12.3	1.75	11.6	1.79										
365R10B	3	519	4959	14270		13584		12887		12148		11131		10177		9427											
365SC10B	74 lbs.	555	5303	17.0	1.80	17.0	1.85	16.2	1.90	15.4	1.94	14.6	1.97	13.9	2.00	13.2	2.05										
365R11B	5	607	5800	15333		14696		14050		13385		12617		11551		10780		10070									
365SC11B	78 lbs.	659	6297	19.2	2.23	19.2	2.29	18.6	2.34	17.8	2.39	17.1	2.43	16.4	2.45	15.7	2.49	15.0	2.55								
				21	2.73	21	2.79	21	2.85	19.9	2.90	19.1	2.95	18.4	2.98	17.8	3.01	17.2	3.06	16.6	3.11						
				17933		17389		16840		16284		15715		15096		14296		13383		12728		11446					
				24	3.57	24	3.64	24	3.70	23	3.77	23	3.82	22	3.87	21	3.90	21	3.93	20	3.98	18.9	4.10				
				19469		18968		18464		17955		17438		16907		16322		15583		14716		13515		12244			
				28	4.57	28	4.64	28	4.71	27	4.78	26	4.85	26	4.90	25	4.95	24	4.99	24	5.02	23	5.13	22	5.26		

365 ACRUB-HP / ACSC-HP

Catalog Number	Mtr. HP/ Drv. Wt.	Fan RPM	Tip Speed	0.250" SP		0.375" SP		0.500" SP		0.750" SP		1.000" SP		1.250" SP		1.500" SP		1.750" SP		2.000" SP		2.250" SP		2.500" SP			
				Sone	BHP	Sone	BHP	Sone	BHP	Sone	BHP	Sone	BHP	Sone	BHP	Sone	BHP	Sone	BHP	Sone	BHP	Sone	BHP	Sone	BHP	Sone	BHP
365RH7B	1	440	4204	8756		7976		7188																			
365SCH7B	36 lbs.			11.3	.97	10.8	1.00	10.1	1.02																		
365RH8B	1-1/2	506	4835	10463		9834		9151		7719																	
365SCH8B	38 lbs.			15.1	1.44	14.4	1.49	13.9	1.52	12.3	1.56																
365RH9B	2	532	5083	11111		10540		9893		8585		6358															
365SCH9B	50 lbs.	557	5322	16.7	1.67	16.0	1.72	15.3	1.76	13.9	1.80	12.4	1.72														
				11278		11204		10598		9362		7859															
				18.2	1.90	17.5	1.95	16.8	2.00	15.6	2.06	13.9	2.06														
365RH10B	3	599	5723	12749		12289		11757		10608		9416		7466													
365SCH10B	74 lbs.	640	6115	21	2.35	20	2.40	19.4	2.46	18.3	2.54	16.7	2.58	15.1	2.48												
				13735		13321		12854		11788		10714		9485													
				23	2.85	22	2.91	22	2.97	21	3.07	19.4	3.13	17.9	3.14												
365RH11B	5	700	6688	15163		14798		14402		13476		12491		11499		10348											
365SCH11B	98 lbs.	760	7262	26	3.70	26	3.76	26	3.83	24	3.96	23	4.05	22	4.10	20	4.11										
				16578		16251		15903		15109		14207		13306		12384		11327		9616							
				30	4.71	30	4.78	30	4.85	28	4.99	27	5.12	26	5.20	25	5.26	23	5.27	22	5.09						
365RH12B	7-1/2	816	7797	17890		17589		17275		16581		15774		14926		14088		13220		12240		10824					
365SCH12B	120 lbs.	872	8332	34	5.81	34	5.88	34	5.96	33	6.11	31	6.26	30	6.37	29	6.45	28	6.51	26	6.52	25	6.38				
				19197		18918		18631		18011		17298		16512		15723		14937		14122		13214		12026			
				38	7.07	38	7.15	38	7.23	37	7.39	36	7.55	35	7.70	34	7.81	32	7.89	31	7.94	29	7.96	28	7.86		

365 ACRUB-XP / ACSC-XP

Catalog Number	Mtr. HP/ Drv. Wt.	Fan RPM	Tip Speed	1.000" SP		1.250" SP		1.500" SP		1.750" SP		2.000" SP		2.250" SP		2.500" SP		3.000" SP		3.500" SP		4.000" SP		4.500" SP		
				Sone	BHP	Sone	BHP	Sone	BHP	Sone	BHP	Sone	BHP	Sone	BHP	Sone	BHP	Sone	BHP	Sone	BHP	Sone	BHP	Sone	BHP	Sone
365RX7B	1	572	5465	4040																						
365SCX7B	36 lbs.			10.8	1.02																					
365RX8B	1-1/2	657	6278	5355		4807		4166																		
365SCX8B	38 lbs.			13.3	1.49	13.5	1.54	14.4	1.55																	
365RX9B	2	691	6602	5829		5344		4784		4112																
365SCX9B	50 lbs.	724	6918	14.5	1.70	14.4	1.76	15.1	1.81	16.2	1.78															
				6269		5836		5335		4770																
				15.8	1.92	15.7	2.00	15.9	2.06	16.7	2.08															
365RX10B	3	778	7434	6957		6591		6171		5698		5173		4532												
365SCX10B	74 lbs.	831	7940	18.0	2.31	17.7	2.42	17.6	2.50	17.9	2.56	18.8	2.58	19.9	2.53											
				7608		7288		6930		6526		6080		5590		5027										
				20	2.74	19.6	2.87	19.5	2.98	19.3	3.05	19.8	3.12	21	3.15	22	3.11									
365RX11B	5	909	8686	8537		8262		7967		7642		7282		6890		6465		5478								
365SCX11B	98 lbs.	988	9441	23	3.45	23	3.62	23	3.76	22	3.88	22	3.97	22	4.04	23	4.21	25	4.06							
				9456		9211		8955		8684		8390		8069		7721		6950		6050						
				27	4.29	26	4.49	26	4.66	26	4.82	25	4.95	25	5.05	25	5.14	26	5.28	28	5.23					
365RX12B	7-1/2	1060	10129	10279		10056		9825		9585		9332		9061		8768		8117		7385		6546				
365SCX12B	120 lbs.	1132	10817	31	5.17	30	5.39	29	5.59	29	5.78	29	5.94	28	6.09	28	6.21	28	6.39	30	6.52	31	6.47			

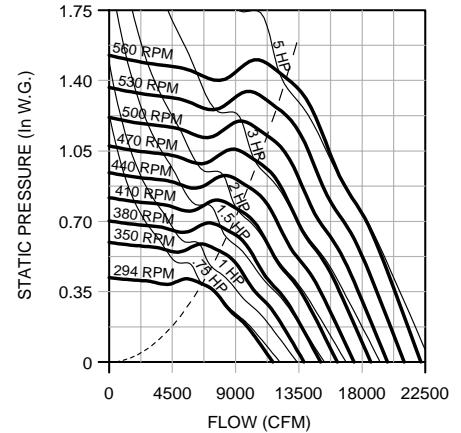
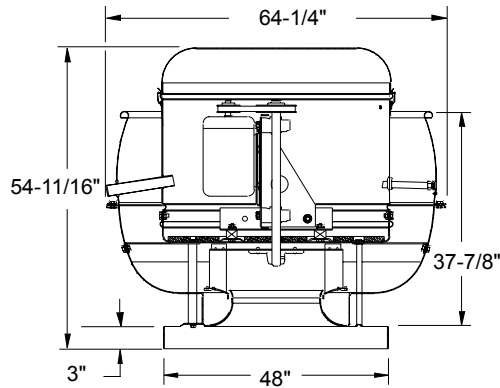
402, 445, 490 ACRUB Data

402 ACRUB

Wheel Diameter - 40.25 inches
Tip Speed (FPM) - 10.5 x RPM
Maximum RPM (Standard Wheel) - 539
Maximum RPM (Reinforced Wheel) - 560
Maximum BHP - 29.8 x (RPM/1000)³
Maximum Motor Frame - 213T
Approx. Ship Wt. (Less Motor) - 484 lbs.
Roof Curb - RCG, RCA - 46
Roof Opening - 43-1/2 inches

Material Gauges

Top Cap Lid - .063
Top Cap Cylinder - .050
Baffle - .080
Base - .080

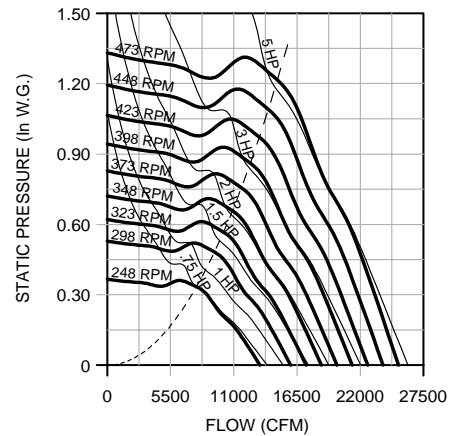
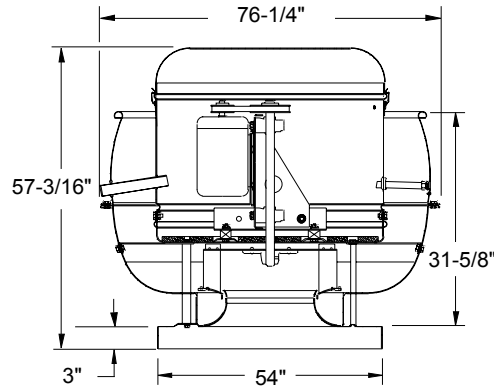


445 ACRUB

Wheel Diameter - 44.5 inches
Tip Speed (FPM) - 11.7 x RPM
Maximum RPM (Standard Wheel) - 463
Maximum RPM (Reinforced Wheel) - 473
Maximum BHP - 49.2 x (RPM/1000)³
Maximum Motor Frame - 213T
Approx. Ship Wt. (Less Motor) - 556 lbs.
Roof Curb - RCG, RCA - 52
Roof Opening - 49-1/2 inches

Material Gauges

Top Cap Lid - .063
Top Cap Cylinder - .050
Baffle - .080
Base - .080

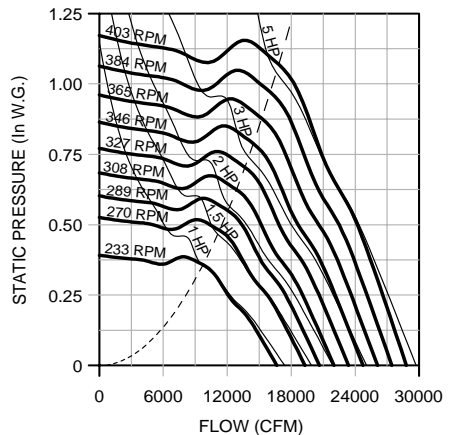
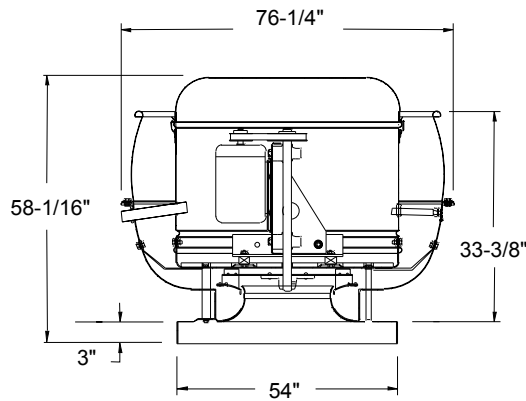


490 ACRUB

Wheel Diameter - 49 inches
Tip Speed (FPM) - 12.8 x RPM
Maximum RPM (Standard Wheel) - 360
Maximum RPM (Reinforced Wheel) - 403
Maximum BHP - 79.6 x (RPM/1000)³
Maximum Motor Frame - 213T
Approx. Ship Wt. (Less Motor) - 715 lbs.
Roof Curb - RCG, RCA - 52
Roof Opening - 49-1/2 inches

Material Gauges

Top Cap Lid - .063
Top Cap Cylinder - .050
Baffle - .080
Base - .080



Performance certified is for Installation Type A: free inlet, free outlet. Power rating (BHP) does not include transmission losses. Performance ratings do not include the effects of appurtenances (accessories) in the airstream. The sound ratings shown are loudness values in fan sones at 5 ft. (1.5m) in a hemispherical free field calculated per AMCA Standard 301. Values shown are for Installation Type A: free inlet fan sone levels.

402 ACRUB

Catalog Number	Mtr. HP/ Drv. Wt.	Fan RPM	Tip Speed	0.000" SP		0.125" SP		0.250" SP		0.375" SP		0.500" SP		0.625" SP		0.750" SP		0.875" SP		1.000" SP		1.250" SP		1.500" SP		
				Sone	BHP	Sone	BHP	Sone	BHP	Sone	BHP	Sone	BHP	Sone	BHP	Sone	BHP	Sone	BHP	Sone	BHP	Sone	BHP	Sone	BHP	Sone
402R6B	3/4 31 lbs.	294	3098	11648		10390		8682		7054																
				8.1	.66	7.6	.70	6.8	.73	6.0	.76															
402R7B	1 36 lbs.	324	3414	12836		11700		10378		8833																
				9.7	.88	9.3	.93	8.6	.96	7.7	.99															
402R8B	1-1/2 38 lbs.	348	3667	13787		12732		11600		10011		8786														
				11.2	1.09	10.9	1.15	10.0	1.19	9.2	1.21	8.4	1.26													
402R9B	2 50 lbs.	392	4130	14738		13752		12727		11292		10094														
				12.7	1.34	12.5	1.39	11.7	1.44	10.9	1.47	10.0	1.51													
402R10B	3 74 lbs.	441	4647	15530		14596		13635		12443		11075		10008												
				14.1	1.57	13.9	1.62	13.1	1.67	12.2	1.71	11.4	1.74	10.7	1.79											
402R11B	5 98 lbs.	515	5426	16283		15393		14482		13456		12024		11041		9511										
				15.4	1.80	15.3	1.87	14.5	1.92	13.7	1.96	12.9	1.99	12.1	2.04	11.3	2.07									
402R10B	3 74 lbs.	471	4963	17472		16642		15799		14910		13702		12517		11618										
				17.4	2.23	17.4	2.29	16.7	2.36	15.9	2.41	15.1	2.44	14.4	2.48	13.7	2.53									
402R11B	5 98 lbs.	560	5900	18660		17884		17098		16289		15355		14058		13119		12256								
				19.6	2.71	19.6	2.79	18.9	2.85	18.1	2.91	17.4	2.95	16.7	2.98	16.0	3.04	15.3	3.10							
402R11B	5 98 lbs.	515	5426	20403		19694		18979		18250		17487		16555		15347		14475		13714						
				23	3.55	23	3.63	22	3.70	22	3.77	21	3.83	20	3.87	19.5	3.90	18.8	3.96	18.2	4.02					
402R11B	5 98 lbs.	560	5900	22186		21534		20878		20214		19536		18809		17911		16786		15939		14485				
				26	4.56	26	4.65	26	4.73	25	4.81	24	4.88	23	4.93	23	4.98	22	5.01	21	5.07	20	5.21			

445 ACRUB

Catalog Number	Mtr. HP/ Drv. Wt.	Fan RPM	Tip Speed	0.000" SP		0.125" SP		0.250" SP		0.375" SP		0.500" SP		0.625" SP		0.750" SP		0.875" SP		1.000" SP		1.250" SP		1.500" SP		
				Sone	BHP	Sone	BHP	Sone	BHP	Sone	BHP	Sone	BHP	Sone	BHP	Sone	BHP	Sone	BHP	Sone	BHP	Sone	BHP	Sone	BHP	Sone
445R6B	3/4 31 lbs.	248	2889	13278		11622		9396																		
				7.2	.66	6.8	.70	5.9	.73																	
445R7B	1 36 lbs.	274	3192	14670		13181		11219		9428																
				8.8	.88	8.4	.94	7.5	.97	6.7	1.01															
445R8B	1-1/2 38 lbs.	294	3425	15740		14358		12758		10864																
				10.0	1.09	9.6	1.15	8.8	1.19	8.0	1.23															
445R9B	2 50 lbs.	331	3856	16865		15577		14198		12258		10768														
				11.4	1.34	11.1	1.41	10.3	1.45	9.4	1.49	8.6	1.54													
445R10B	3 74 lbs.	373	4345	17721		16498		15219		13393		11972														
				12.5	1.56	12.3	1.62	11.5	1.68	10.6	1.71	9.8	1.76													
445R11B	5 98 lbs.	436	5079	18578		17412		16208		14633		13043		11553												
				13.7	1.80	13.6	1.86	12.7	1.92	11.9	1.96	11.1	2.01	10.3	2.07											
445R10B	3 74 lbs.	398	4636	19970		18887		17779		16538		14792		13586		11818										
				15.7	2.23	15.7	2.31	14.8	2.37	14.1	2.42	13.2	2.46	12.4	2.52	11.6	2.56									
445R11B	5 98 lbs.	473	5510	21309		20294		19262		18173		16686		15247		14146										
				17.6	2.71	17.6	2.79	16.9	2.86	16.1	2.92	15.3	2.96	14.6	3.01	13.9	3.08									
445R11B	5 98 lbs.	515	5426	23343		22418		21481		20522		19455		17953		16703		15707		14305						
				21	3.56	21	3.65	21	3.73	19.3	3.81	18.6	3.87	17.8	3.90	17.2	3.96	16.5	4.04	15.8	4.11					
445R11B	5 98 lbs.	560	5900	25324		24471		23612		22737		21827		20762		19312		18178		17265						
				24	4.55	24	4.64	24	4.74	23	4.82	22	4.89	21	4.95	20	4.99	19.8	5.05	19.1	5.13					

490 ACRUB

Catalog Number	Mtr. HP/ Drv. Wt.	Fan RPM	Tip Speed	0.000" SP		0.125" SP		0.250" SP		0.375" SP		0.500" SP		0.625" SP		0.750" SP		0.875" SP		1.000" SP		1.250" SP		1.500" SP		
				Sone	BHP	Sone	BHP	Sone	BHP	Sone	BHP	Sone	BHP	Sone	BHP	Sone	BHP	Sone	BHP	Sone	BHP	Sone	BHP	Sone	BHP	Sone
490R7B	1 36 lbs.	233	2988	16655		14719		12081																		
				7.8	.88	7.3	.94	6.5	.97																	
490R8B	1-1/2 38 lbs.	251	3219	17941		16152		13825		11666																
				9.0	1.10	8.7	1.16	7.8	1.21	6.9	1.26															
490R9B	2 50 lbs.	282	3617	19156		17486		15564		13259																
				10.3	1.34	9.9	1.41	9.1	1.46	8.3	1.50															
490R10B	3 74 lbs.	317	4066	20157		18572		16856		14496		12543														
				11.4	1.56	11.1	1.63	10.2	1.69	9.3	1.73	8.5	1.80													
490R11B	5 98 lbs.	371	4759	21086		19573		17979		15688		13990														
				12.3	1.78	12.1	1.86	11.3	1.93	10.4	1.97	9.5	2.03													
490R10B	3 74 lbs.	339	4348	22659		21253		19803		17934		15976		14252												
				14.1	2.21	14.0	2.30	13.1	2.37	12.3	2.42	11.4	2.47	10.7	2.55											
490R11B	5 98 lbs.	403	5169	24231		22918		21576		20073		17957		16493		14366										
				16.0	2.71	15.9	2.80	15.1	2.88	14.3	2.94	13.5	2.99	12.7	3.06	11.9	3.11									
490R11B	5 98 lbs.	371	4759	26519		25320		24103		22834		21216		19339		18035		16312								
				18.7	3.55	18.7	3.65	18.0	3.74	17.2	3.82	16.5	3.88	15.7	3.93	15.0	4.01	14.3	4.09							
490R11B	5 98 lbs.	403	5169	28806		27703		26589		25448		24206		22499		20872		19684		18279						
				22	4.55	22	4.66	21	4.76	20	4.86	19.6	4.93	18.8	4.98	18.1	5.04	17.4	5.13	16.7	5.23					

Performance certified is for Installation Type A: free inlet, free outlet. Power rating (BHP) does not include transmission losses. Performance ratings do not include the effects of appurtenances (accessories) in the airstream. The sound ratings shown are loudness values in fan sones at 5 ft. (1.5m) in a hemispherical free field calculated per AMCA Standard 301. Values shown are for Installation Type A: free inlet fan sone levels. **Shaded area indicates reinforced wheel required.**