

RE(C) SERIES EXTERIOR ROOF/WALL CENTRIFUGAL FANS

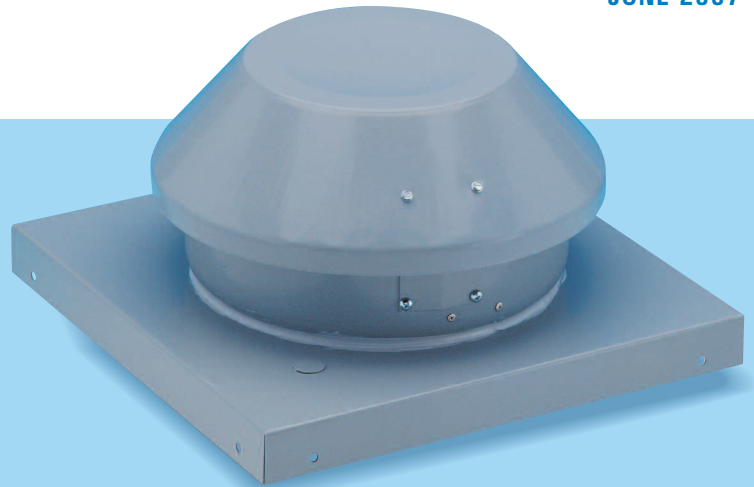
Low Profile Design

Fantech's RE/REC Series direct drive centrifugal fans provide an excellent solution for residential or commercial ventilation applications where the fan must be mounted on the exterior of the building. Two base styles are available: RE models with a flat base for direct flashing to the roof or REC models with flanged base for curb mounting. RE models can also be mounted on an exterior wall when roof access is not suitable.

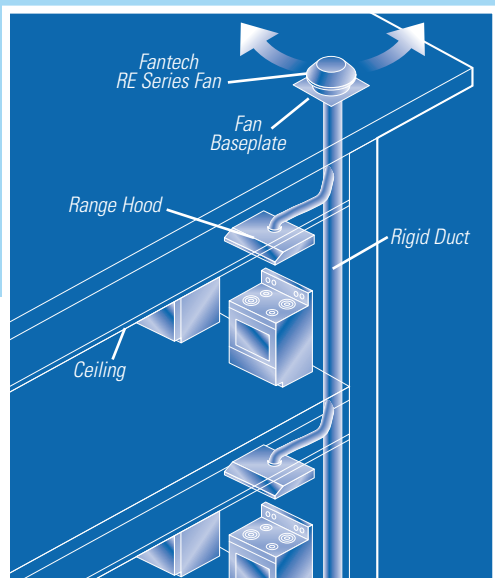
With duct diameters from 4" to 10", air performance from 116 to 1008 CFM, and 100% speed controllability, these multi-purpose fans can be used to move air from one or more venting points. Interior noise is not an issue because the fan motor is located outside the building envelope.

Easy Installation

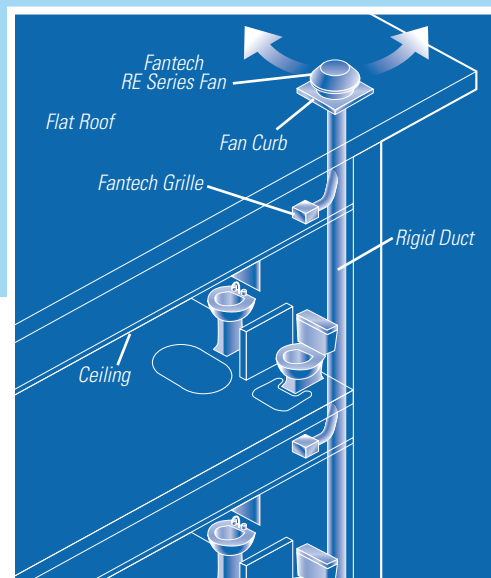
RE Fans are simple to install; no installation extras are required. Simply mount the fan on the roof or wall, then connect the electrical supply to the easily accessible terminal box. The top cover is removable for access to the motor and wiring connections.



Fantech, Inc. certifies that the RE & REC Series shown herein is licensed to bear the AMCA Seal. The ratings shown are based on tests and procedures performed in accordance with AMCA Publication 211 and AMCA Publication 311 and comply with the requirements of the AMCA Certified Ratings Program.



MULTIPLE KITCHEN APPLICATION



MULTIPLE BATH APPLICATION

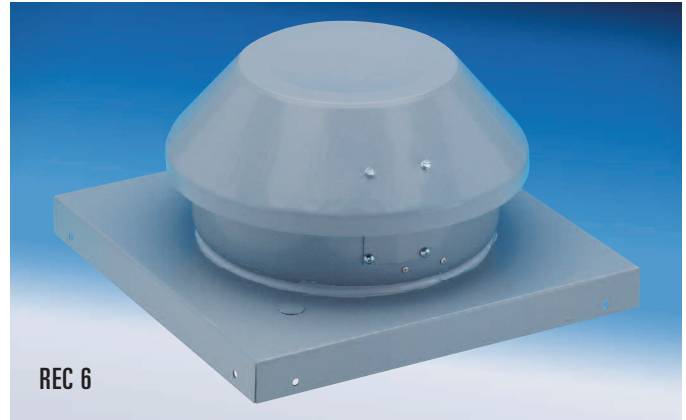
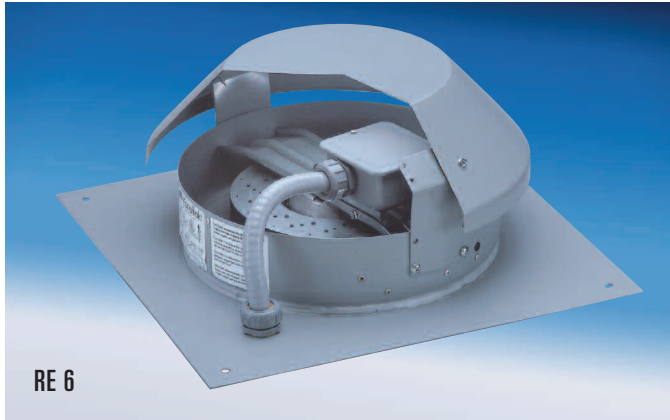
BUILT TOUGH INSIDE AND OUT:

- Galvanized steel housing features baked powder-coat finish (can be painted to match decor)
- Unique external rotor motor has built-in thermal overload protection with automatic reset
- Permanently lubricated sealed ball bearings

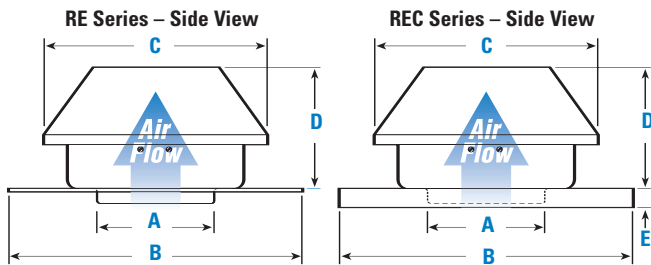
- 100% speed controllable for highly efficient and economical airflow
- Excellent heat dissipation for long motor life
- Suitable for airstream temperatures of up to 140° F
- CSA Certified
- Five-year warranty

RE(C) SERIES

ROOF/WALL MOUNTED CENTRIFUGAL FANS



DIMENSIONAL DATA



| Model | A' | B | C | D | E |
|-----------|----|-----|-----|-----|----|
| RE 54** | 5 | 15½ | 9½ | 6 | — |
| REC 54** | 5 | 15½ | 9½ | 6 | 1½ |
| RE 6 | 6 | 15½ | 13 | 6½ | — |
| REC 6 | 6 | 15½ | 13 | 6½ | 1½ |
| RE 8XL | 8 | 20 | 15¾ | 6 | — |
| REC 8XL | 8 | 20 | 15¾ | 6 | 1½ |
| RE 10XL | 10 | 20 | 19¾ | 11¼ | — |
| REC 10XL | 10 | 20 | 19¾ | 11¼ | 1½ |
| RE 10XLT | 10 | 20 | 19¾ | 12½ | — |
| REC 10XLT | 10 | 20 | 19¾ | 12½ | 1½ |

All dimensions in inches.

† Male duct connector is 1/8" smaller than duct size.

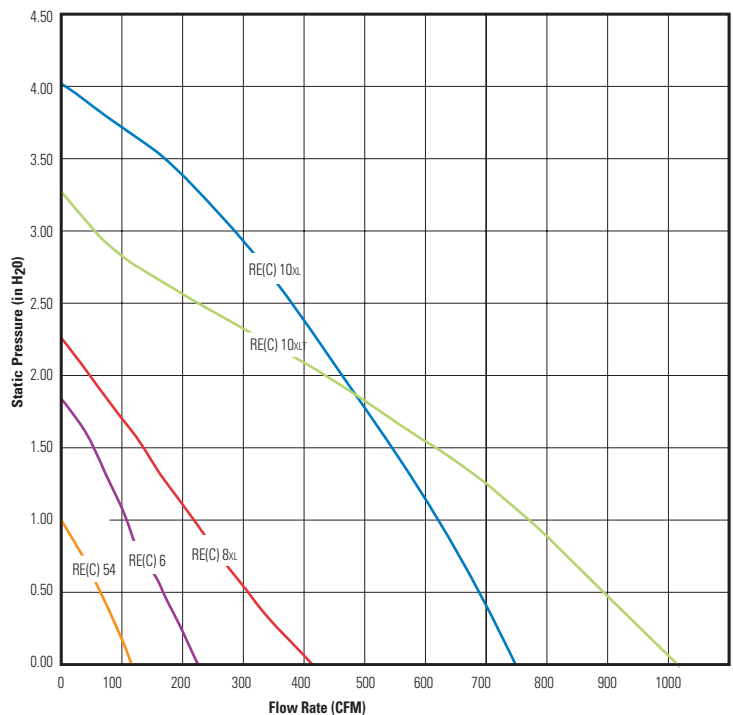
** Supplied with 5" to 4" reducer



Fantech, Inc. certifies that the RE & REC Series shown herein is licensed to bear the AMCA Seal. The ratings shown are based on tests and procedures performed in accordance with AMCA Publication 211 and AMCA Publication 311 and comply with the requirements of the AMCA Certified Ratings Program.



AIR PERFORMANCE GRAPH



PERFORMANCE DATA (For sound performance data refer to publication RE(C)-0607.)

| Fan Model | RPM | Voltage | Rated Watts | Max. Amps | Static Pressure in Inches W.G. | | | | | | | | | | | Max. Ps | Duct Dim. | Sones† | |
|-----------|------|---------|-------------|-----------|--------------------------------|--------|-------|--------|------|-------|------|-------|------|------|------|---------|-----------|--------|------|
| | | | | | 0" | 0.125" | 0.25" | 0.375" | 0.5" | 0.75" | 1.0" | 1.25" | 1.5" | 2.0" | 2.5" | | | | |
| RE 54 | 3040 | 115 | 19 | 0.18 | 116 | 105 | 92 | 79 | 65 | 36 | 1 | — | — | — | — | — | — | 4" | *3.5 |
| RE 6 | 2700 | 115 | 87 | 0.80 | 227 | 213 | 199 | 184 | 169 | 134 | 106 | 80 | 51 | — | — | 1.84" | 6" | *7.5 | |
| RE 8XL | 2800 | 115 | 153 | 1.40 | 409 | 382 | 356 | 331 | 307 | 259 | 212 | 170 | 130 | 43 | — | 2.23" | 8" | *8.9 | |
| RE 10XL | 3250 | 115 | 394 | 3.60 | 753 | 738 | 721 | 705 | 690 | 656 | 622 | 586 | 548 | 467 | 383 | 4.03" | 10" | *16.4 | |
| RE 10XLT | 2950 | 115 | 531 | 4.86 | 1008 | 979 | 949 | 919 | 890 | 831 | 766 | 695 | 609 | 429 | 217 | 3.17" | 10" | *21.0 | |

Performance certified is for installation type A - Free inlet, Free outlet. Speed (RPM) shown is nominal. Performance is based on actual speed of test.

Performance ratings do not include the effects of appurtenances (accessories).

† The sound ratings shown are loudness values in fan sones at 5ft. (1.5m) in hemispherical free field calculated per AMCA Standard 301.

Values shown are for installation Type A: free inlet fan sone levels.

* Sone value shown was calculated at 0.5" (static pressure in inches W.G.).

† Sone value shown was calculated at 0.75" (static pressure in inches W.G.).



United States 1712 Northgate Blvd. • Sarasota, FL. 34234 • 1.800.747.1762 • www.fantech.net
Canada 50 Kanalfakt Way • Bouctouche, NB E4S 3M5 • 1.800.565.3548 • www.fantech.ca

Item #: 450443
 Rev Date: 071107

Fantech, reserves the right to modify, at any time and without notice, any or all of its products' features, designs, components and specifications to maintain their technological leadership position.